



21 The Mill, The Boulevard

In Excess of £310,000

21 The Mill

The Boulevard, Horsham

This stunning, modern and contemporary two-bedroom, two-bathroom second floor apartment is situated in the sought after Highwood Village by Berkeley Homes, on the edge of Horsham offering access to the town centre, mainline train station, a selection of well regarded pubs and restaurants and the nearby countryside.

Situated in the impressive The Mill apartment block, upon entering this spacious and light apartment you will be impressed by the open plan kitchen/dining/sitting room that measures an impressive 23.9ft with double doors leading out to the Juliette style balcony. The kitchen has a range of wall and floor units as well as high end integrated appliances including a fridge/freezer, dishwasher, oven, hob and extractor hood. The sitting room provides ample space for a sitting/dining room space set up and features a double aspect with a South Westerly orientation. The bathrooms are finished with Laufen bathroom-ware and quality chrome fittings by Vado with the en-suite featuring a large walk-in shower. Also of note is the generous storage options and the utility cupboard within the hallway that houses the washing machine. There is also communal gardens and underground allocated parking spaces for two cars.

There is an elevator is available to all floors.

Council Tax band: C

Tenure: Leasehold

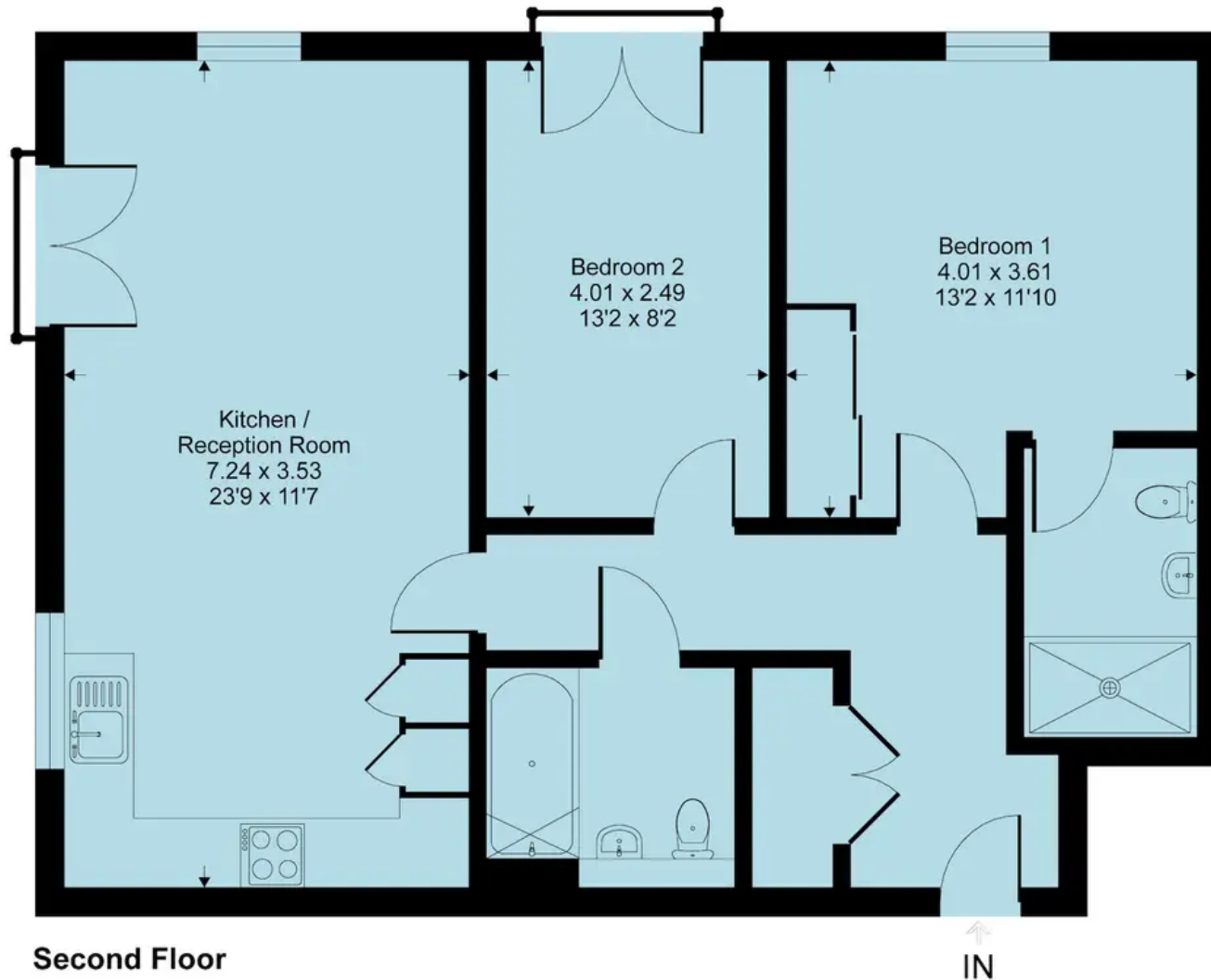
EPC Energy Efficiency Rating: B

EPC Environmental Impact Rating: B



The Mill, RH12

Approximate Gross Internal Area = 71 sq m / 761 sq ft



This floor plan is for representation purposes only as defined by the RICS code of Measuring Practice (and IPMS where requested) and should be used as such by any prospective purchaser. Whilst every attempt has been made to ensure the accuracy contained here, the measurement of doors, windows and rooms is approximate and no responsibility is taken for any error, omission or mis-statement. Specifically no guarantee is given on the total area of the property if quoted on the plan. Any figure provided is for guidance only and should not be used for valuation purposes.

Copyright Within Walls. 2024 - Produced for Henry Adams



Henry Adams - Horsham

Henry Adams HRR Ltd, 50 Carfax, Horsham - RH12 1BP

01403 253271

horsham@henryadams.co.uk

www.henryadams.co.uk

Agents Note - Our particulars are for guidance only and are intended to give a fair overall summary of the property. They do not form part of any contract or offer, and should not be relied upon as a statement or representation of fact. Measurements, areas and distances are approximate only. Photographs may include lifestyle shots and pictures of local views. No undertaking is given as to the structural condition of the property, or any necessary consents or the operating ability or efficiency of any service, system or appliance. Please ask if you would like further information, especially before you travel to the property.