

Property Description

Wright & Wright are pleased to be able to offer for sale this well presented two bedroom double bayed semi detached property, offering easy transport links and walkable distance to town centre. uPVC double glazing and gas central heating. Entrance hall, lounge, dining kitchen. Two double bedrooms, refitted bathroom. Garden to rear with external utility area. Off road parking to front for two vehicles. No chain.



Entrance Hall

Having Upvc Front door, ceiling light point and radiator

Lounge 3.55m x 3.40m (11' 8" x 11' 2")

Having Upvc double glazed window to the front aspect, ceiling light point, radiator and open fireplace

Dining Kitchen 4.70m x 3.46m (15' 5" x 11' 4")

Having two Upvc double glazed windows to the rear aspect, two ceiling light points, radiator, range of matching wall and base units with work surfaces over, single bowl drainer sink unit with mixer tap, gas cooker, plumbing for automatic washing machine

First Floor Landing

Having Upvc double glazed window to the side aspect, ceiling light point, loft access

Bedroom One 3.87m x 3.42m (12' 8" x 11' 3")

Having Upvc double glazed window to the front aspect, ceiling light point, radiator and walk in wardrobe

Bedroom Two 3.44m x 2.85m (11' 3" x 9' 4")

Having Upvc double glazed window to the rear aspect, ceiling light point, radiator and storage cupboard

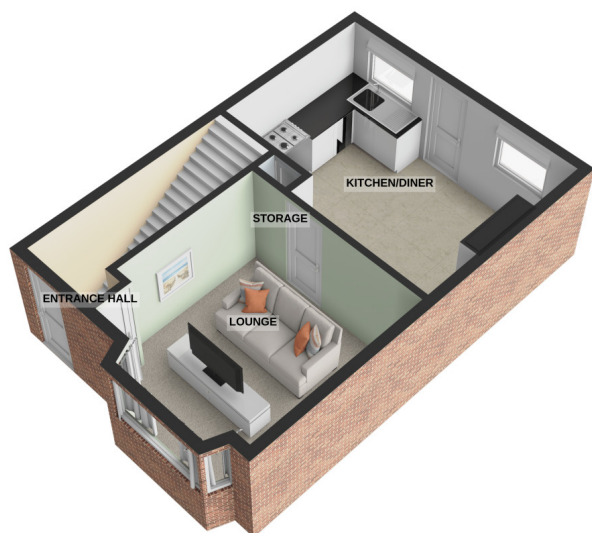
Family Bathroom 2.52m x 1.86m (8' 3" x 6' 1")

Having Upvc double glazed window to the rear aspect, spot lighting, tiled flooring, heated towel rail and three piece suite comprising of low level flush WC, hand basin and bath with shower over

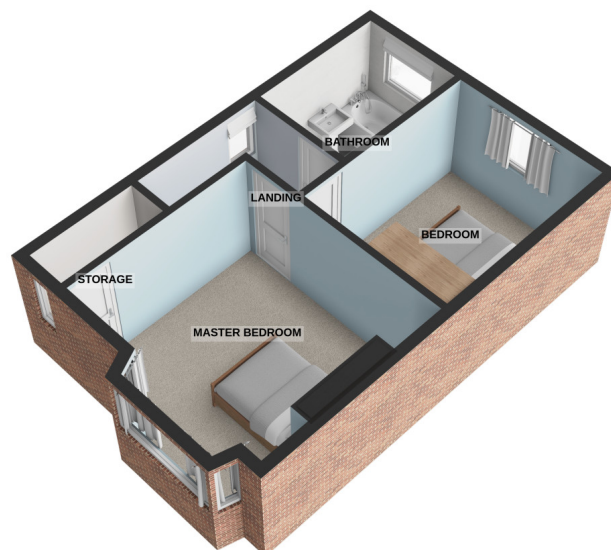
Outside

having off road parking to front for two vehicles, gated secure access to enclosed rear garden with paved patio, lawn and external brick built utility area with power.

GROUND FLOOR
347 sq.ft. (32.3 sq.m.) approx.



1ST FLOOR
350 sq.ft. (32.5 sq.m.) approx.



TOTAL FLOOR AREA : 697 sq.ft. (64.8 sq.m.) approx.

For illustrative purposes only. Decorative finishes, fixtures, fittings and furnishings do not represent the current state of the property. Measurements are approximate. Not to scale.
Made with Metropix © 2025

