



18 Nut Tree Court Milton Street, Brixham, Devon, TQ5 0EG
Flat - Purpose Built
£695 Per Calendar Month

boycebrixham
email lettings@ljboyce.co.uk call 01803 856112

A well presented top floor apartment set in a purpose built block, situated in a convenient location near to St Mary's Square. Close by is a local convenience store with post office within. This one bedroomed apartment comprises of a fitted kitchen with built-in oven and hob, living room with access to a balcony, bathroom/wc and a double bedroom with built-in bedroom furniture. There is an allocated parking space and visitors parking. The block has a secure telephone entry system installed. No pets allowed due to Building Lease.

In order to qualify for a tenancy, the total annual income between tenants is a minimum of 30 times the monthly rent. A holding deposit of one week's rent secures the property whilst we process referencing. This is used towards your first months rent when tenancy starts. Should you fail referencing or break the contract, payment is withheld. The deposit for the tenancy is 5 weeks rent. The rent and deposit must be cleared in our account before the tenancy starts.



- Second Floor Apartment
- Fitted Kitchen
- Allocated Parking Space
- Holding Deposit £160.00

- Good Sized Lounge with Balcony
- Electric Heating and Double Glazing
- Council Tax Band A
- Deposit £801.00



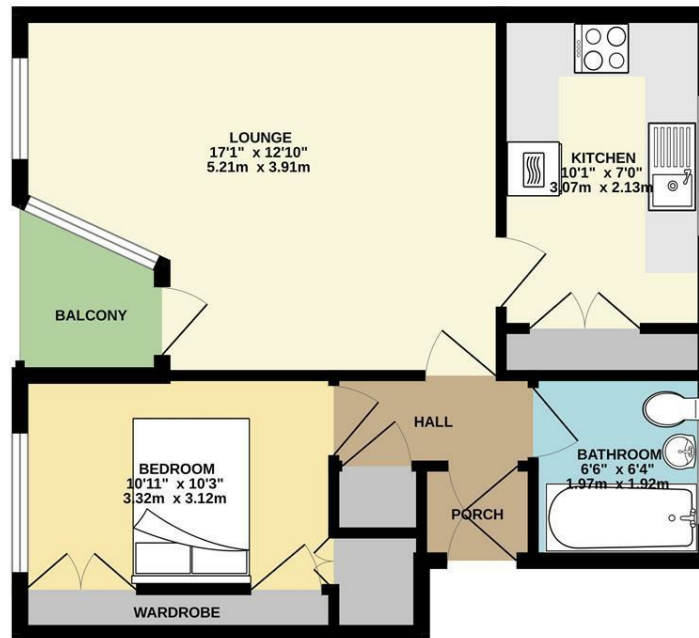
Council Tax Band: A



boycebrixham
email lettings@ljboyce.co.uk call 01803 856112

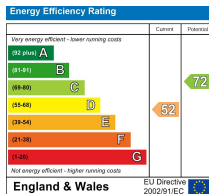


SECOND FLOOR FLAT
483 sq.ft. (44.9 sq.m.) approx.



TOTAL FLOOR AREA : 483 sq.ft. (44.9 sq.m.) approx.
While every attempt has been made to ensure the accuracy of the floorplan contained here, measurements of doors, windows, rooms and any other items are approximate and no responsibility is taken for any error, omission or mis-statement. This plan is for illustrative purposes only and should be used as such by any prospective purchaser. The services, systems and appliances shown have not been tested and no guarantee as to their operability or efficiency can be given.
Made with Metropix ©2023

Current EPC Rating: E



Find us on



Please note floorplans are to be used as a guide only. The Agent has not tested any apparatus, equipment, fixtures and fittings or services and so cannot verify that they are in working order or fit for purpose. A buyer is advised to obtain verification from their solicitor or surveyor. References to the tenure of the property are based on information supplied by the seller. The agent has not had sight of the title documents. A buyer is advised to obtain verification from their solicitor. You are advised to check the availability of this property before travelling distance to view.

boycebrixham
email lettings@ljboyce.co.uk call 01803 856112