



Lytham
Estate Agents

Lytham Estate Agents
2a Clifton Square,
FY8 5JP

Telephone: 01253 796996

Email:
info@lythamestateagents.co.uk

Website:
www.lythamestateagents.co.uk/



Apartment 4 Withnell Hall Gardens, Chorley Road, Chorley
PR6 8EH

Guide Price
£485,000

Luxury Two Bedroom Apartment in a Stunning Manor House Conversion



Entrance & Living Area

The grand atrium of Withnell Hall features original ceramic floor tiles, a striking aluminium and glass roof lantern, and meticulously restored stair spindles, all evoking the grandeur of its heritage. The apartment itself opens into a charming and cosy living room, enriched with high vaulted ceilings, exposed timber beams, and traditional sash windows that flood the space with natural light. A characterful log-burning stove with a tiled hearth and wood mantel serves as the room’s centrepiece, adding a warm and inviting atmosphere. Herringbone-engineered oak flooring enhances the timeless appeal.

Dining Room/Study

A second reception room provides versatility as either a formal dining space or a private study. Built-in fitted cupboards incorporate a convenient pull-out computer drawer, making it ideal for home working. A double-glazed sash window, feature ceiling lighting, and stylish décor complete this elegant and functional space.

Kitchen

Blending contemporary design with period features, the kitchen is fitted with a range of sleek wall and base units complemented by luxurious wraparound quartz worktops. NEFF integrated appliances, including an oven, combi-oven, induction hob, and dishwasher, cater to all culinary needs. The Hotpoint fridge freezer is seamlessly built-in, while soft-close drawers and a practical space for a washer/dryer add to the modern convenience. The kitchen also boasts tiled flooring, part-tiled walls, exposed ceiling beams, and a sash window with shutter blinds.

Master Bedroom & En-Suite

The master bedroom offers a tranquil retreat, featuring fitted wardrobes with integrated interior lighting and TV, a bespoke dressing table, and a charming double-glazed sash window. The accompanying en-suite bathroom is a sanctuary of relaxation, equipped with a luxurious double shower featuring a rainfall showerhead, a stylish vanity wash hand basin, a low-flush WC, and contemporary tiling. A sash window, ladder style heated towel rail and illuminated mirror complete the elegant design.

Second Bedroom

A bright and spacious second bedroom benefits from a central ceiling light, sash double-glazed window, and neutral décor, making it perfect for guests or as an additional workspace.

Main Bathroom

The beautifully appointed bathroom comprises a three-piece suite, including a bath with a thermostatic shower over, a vanity wash hand basin with built-in storage, and a low-flush WC. Tiled flooring, part-tiled walls, a sash window, a heated towel warmer, and an illuminated mirror add to the sense of luxury.

External Features & Communal Grounds

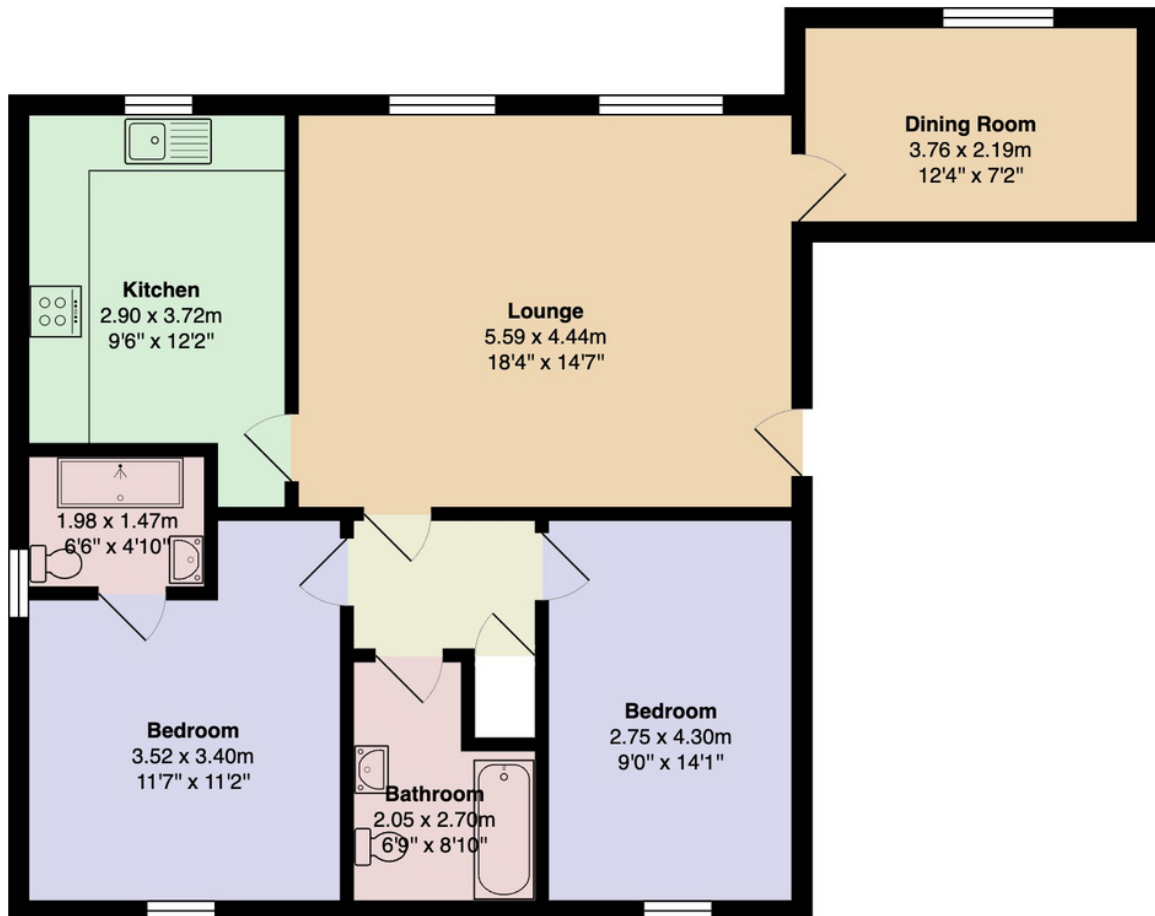
The apartment forms part of a secure, private gated development, offering intercom entry and two allocated cobbled parking spaces. Withnell Hall’s beautifully maintained communal gardens provide a serene setting, with a dedicated front lawn area exclusively for apartment residents. Further benefits include a private garage, PV solar panels for communal areas, and a 10-year LABC warranty for peace of mind.

Disclaimer

You may download or store this material for your own personal use and research. You may NOT republish, retransmit, redistribute or otherwise make the material available to any party or make the same available on any website, online service or bulletin board of your own or of any other party or make the same available in hard copy or in any other media without the website owner’s express prior written consent. The website owner’s copyright must remain on all reproductions of material taken from this website. Please note we have not tested any apparatus, fixtures, fittings, or services. Interested parties must undertake their own investigation into the working order of these items. All measurements are approximate and photographs provided for guidance only.



Floor Plans



Total Area: 85.4 m² ... 919 ft²

All measurements are approximate and for display purposes only