



Lytham
Estate Agents

Lytham Estate Agents
2a Clifton Square,
FY8 5JP

Telephone: 01253 796996

Email:
info@lythamestateagents.co.uk

Website:
www.lythamestateagents.co.uk/



83 Hove Road, Lytham St Annes FY8 1XH

£229,950

Beautifully renovated three-bedroom home with a stunning open-plan kitchen diner, located just minutes from both Lytham and St Annes. Viewing is essential to fully appreciate the quality and style on offer!



Hallway

UPVC front door and obscured side panels. Carpeted staircase leads to the first floor. Radiator. Under stair storage cupboard. Door to

Living Room

Carpeted. Radiator. Front facing window. Brand new gas fire. Door to kitchen.

Kitchen Diner

Wood effect tiling. Grey gloss wall and base units. Wood effect worktop. Bosch electric oven, induction hob and matching hood. Black sink and drainer with mixer tap. Integrated dishwasher. Under stair storage cupboard. Door to

Inner Hallway

UPVC door to the front and rear. Radiator. Door to

Utility Room

Wash basin with mixer tap. WC with button flush. New Baxi boiler. Rear facing window. Radiator. Plumbing for washing machine.

First Floor Landing

Carpeted. Loft hatch. Pendant light. Side facing window.

Family Bathroom

Fully tiled. Chrome heated towel rail. Side facing obscured window. Pedestal wash basin with mixer tap. Technique tiled bath with mixer tap, rain head and shower attachment.

Bedroom One

Carpeted. Radiator. Rear facing window. Pedant light.

Bedroom Two

Carpeted. Radiator. Pedant light. Front facing window. Fire place.

Additional Information

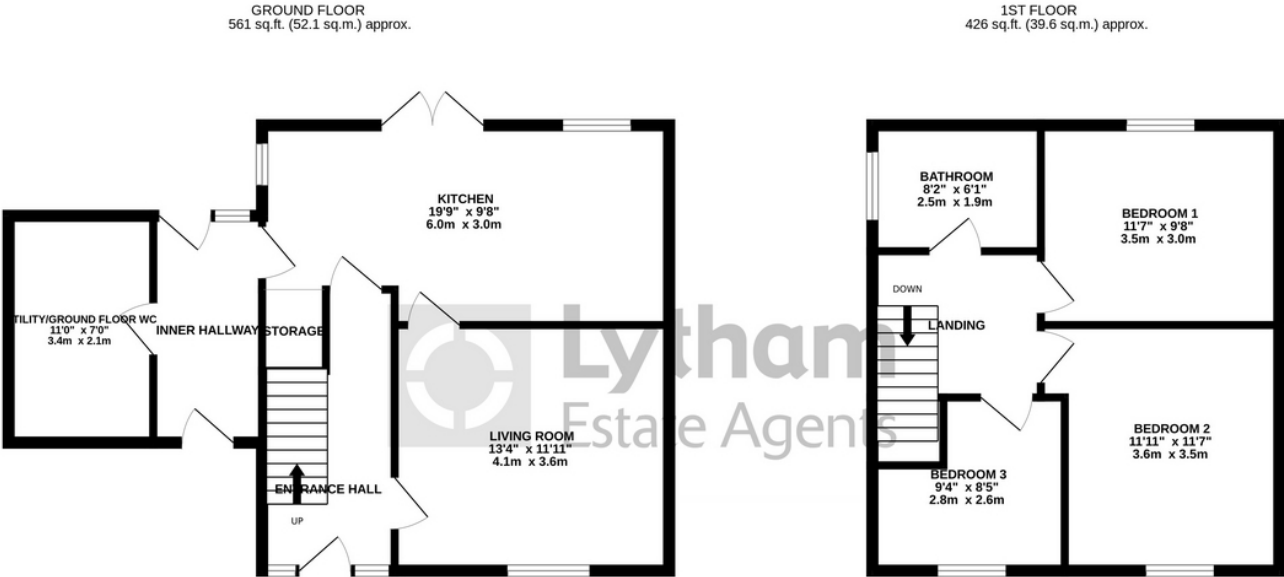
- Fully rewired, replumbed and replastered.
- Insulated loft
- New facials, soffits, gutters, windows and outdoor lighting.
- Outside tap.
- New drainage.

Disclaimer

You may download or store this material for your own personal use and research. You may NOT republish, retransmit, redistribute or otherwise make the material available to any party or make the same available on any website, online service or bulletin board of your own or of any other party or make the same available in hard copy or in any other media without the website owner's express prior written consent. The website owner's copyright must remain on all reproductions of material taken from this website. Please note we have not tested any apparatus, fixtures, fittings, or services. Interested parties must undertake their own investigation into the working order of these items. All measurements are approximate and photographs provided for guidance only.



Floor Plans



TOTAL FLOOR AREA : 987 sq.ft. (91.7 sq.m.) approx.

Whilst every attempt has been made to ensure the accuracy of the floorplan contained here, measurements of doors, windows, rooms and any other items are approximate and no responsibility is taken for any error, omission or mis-statement. This plan is for illustrative purposes only and should be used as such by any prospective purchaser. The services, systems and appliances shown have not been tested and no guarantee as to their operability or efficiency can be given.

Made with Metropix ©2023