



Lytham
Estate Agents

Lytham Estate Agents
2a Clifton Square,
FY8 5JP

Telephone: 01253 796996

Email:
info@lythamestateagents.co.uk

Website:
www.lythamestateagents.co.uk/



9 Beverley Road North, Lytham St. Annes FY8 3EU

£565,000

Versatile five-bedroom detached bungalow with commercial or residential potential. Previously a care home, it features wheelchair-accessible gardens, ample parking, and a spacious layout.



Entrance Porch

UPVC double glazed obscure window and door to the front. Tiled flooring, ceiling lights, and cupboard housing meters and consumer unit. Obscure glazed door and window to:

Entrance Hall

Turned staircase leading to the first floor. Wood effect vinyl flooring, ceiling lights and under stairs storage cupboard. Doors leading to the following rooms:

Bedroom One

UPVC double glazed bay window to the front, and further windows to the side. Fitted vanity unit with inset wash hand basin and chrome mixer tap. Ceiling lights, radiators, carpeted flooring, shaver point and TV aerial point.

Bedroom Two

UPVC double glazed window to the side. Fitted vanity unit with inset wash hand basin and chrome mixer tap. Wall mounted mirrored vanity cabinet, wood effect vinyl flooring, ceiling lights, radiator, shaver point and TV aerial point.

Second Lounge

UPVC double glazed bay window to the front, and further window to the side. Fitted vanity unit with inset wash hand basin and chrome mixer tap. Wall mounted mirrored vanity cabinet, carpeted flooring, ceiling lights, radiators, shaver point and TV aerial point.

Bedroom Three

UPVC double glazed window to the side. Fitted vanity unit with inset wash hand basin and chrome mixer tap. Wall mounted mirrored vanity cabinet, wood effect vinyl flooring, ceiling lights, radiator, and TV aerial point.

Bathroom

Three piece white suite, comprising: raised panelled bath with chrome mixer tap, body massaging jets and handheld shower attachment; wall mounted wash hand basin with chrome mixer tap; and WC with push button flush. Tiled walls, vinyl flooring, radiator, ceiling light, spot lighting, wall mounted fitted storage cupboards and mirror.

Lounge

UPVC double glazed French doors and windows to the side and rear. Wood effect vinyl flooring, TV aerial points, ceiling and wall lights, radiators, and loft access hatch with pull down ladder. Opening with adjacent obscure glazed panels leads to:

Kitchen

UPVC double glazed windows to the side and rear. Range of fitted units with laminate work surface, breakfast bar and corner double bowl stainless steel sink and drainer with chrome mixer tap. Wood effect vinyl flooring, radiators, ceiling lights, spot lighting and wall mounted wash hand basin with twin taps. Door to:

Rear Hallway

UPVC double glazed external door to the front. Radiator, wood effect vinyl flooring, and ceiling lights. Doors to the following rooms:

Utility Room

UPVC double glazed external door to the side. Range of fitted units with laminate work surface and inset single bowl stainless steel sink and drainer with twin chrome taps. Strip lighting, loft access hatch, vinyl flooring, and space and plumbing for washing machine and tumble dryer.

WC

UPVC double glazed obscure window to the front. Two piece white suite, incorporating vanity unit with inset wash hand basin and chrome mixer tap; and WC with concealed cistern and push button flush. Radiator, extractor fan, ceiling light and vinyl flooring.

Bedroom Four

UPVC double glazed windows to the front and rear. Fitted vanity unit with inset wash hand basin and chrome mixer tap. Wood effect vinyl flooring, radiators, ceiling lights, TV aerial point, loft access hatch, and wall mounted mirrored vanity cabinet.

First Floor Landing

Aforementioned staircase from the ground floor. Carpeted flooring, and ceiling light. Doors leading to the following rooms:

Bedroom Five

UPVC double glazed window to the front. Fitted shower enclosure with wall mounted chrome controls and handheld shower attachment on riser rail. Radiator, ceiling lights, fitted wardrobes and carpeted flooring.

Office

UPVC double glazed window to the side. Ceiling beams, strip lighting, radiator, telephone point, carpeted flooring and useful eaves storage cupboard.

WC

UPVC double glazed obscure window to the rear. Two piece white suite, incorporating vanity unit with inset wash hand basin and chrome mixer tap; and WC with concealed cistern and push button flush. Tile effect vinyl flooring, tiled walls, ceiling light, chrome ladder style towel radiator and eaves storage area housing combi boiler.

External

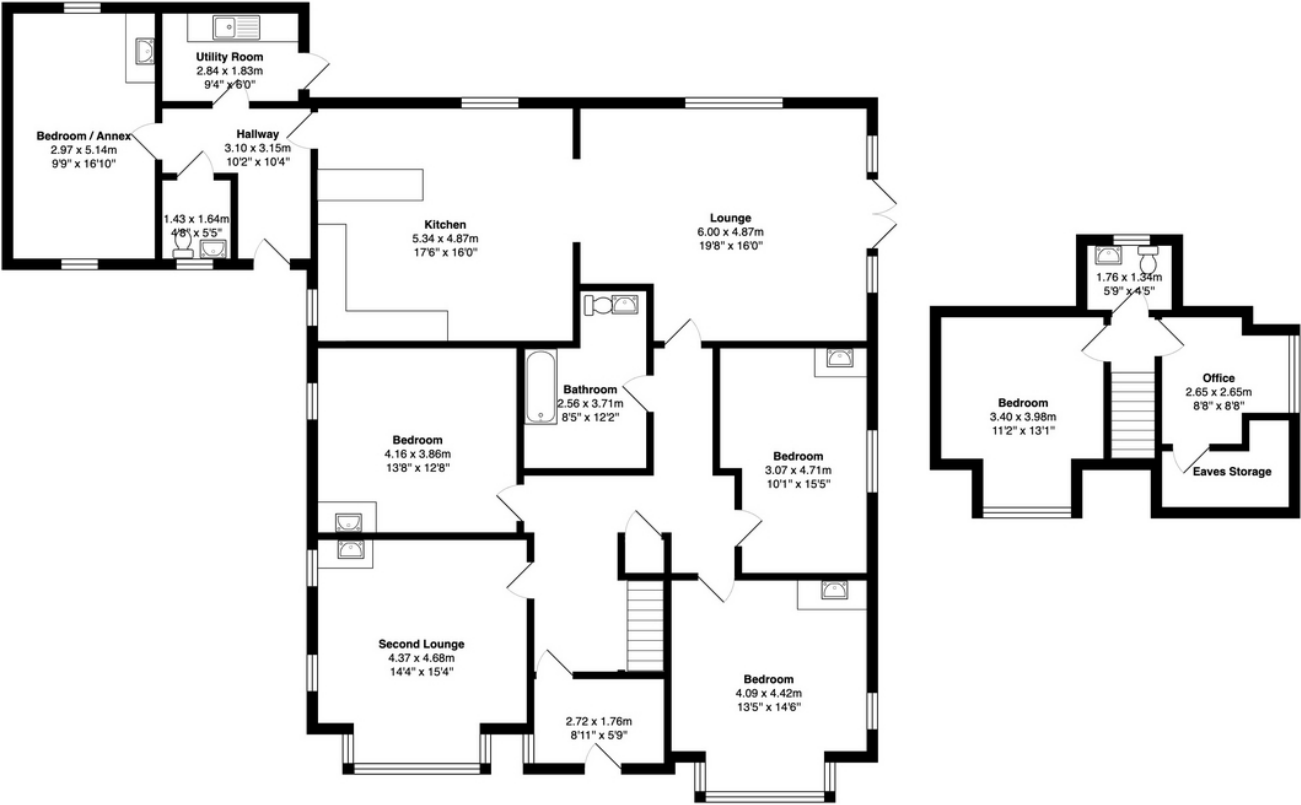
Large block paved driveway to the front. Wrap around gardens to the side with paved paths and patio area. Lawned garden area and mature bordering plants, trees and shrubs.

Disclaimer

You may download or store this material for your own personal use and research. You may NOT republish, retransmit, redistribute or otherwise make the material available to any party or make the same available on any website, online service or bulletin board of your own or of any other party or make the same available in hard copy or in any other media without the website owner's express prior written consent. The website owner's copyright must remain on all reproductions of material taken from this website. Please note we have not tested any apparatus, fixtures, fittings, or services. Interested parties must undertake their own investigation into the working order of these items. All measurements are approximate and photographs provided for guidance only.



Floor Plans



Total Area: 216.6 m² ... 2331 ft²
All measurements are approximate and for display purposes only