



Lytham
Estate Agents

Lytham Estate Agents
2a Clifton Square,
FY8 5JP

Telephone: 01253 796996

Email:
info@lythamestateagents.co.uk

Website:
www.lythamestateagents.co.uk/



8 Rudyard Place, Lytham St. Annes FY8 2EQ

**Offers In Excess
Of £219,000**

Fantastic opportunity: Extended three-bedroom family home with spacious accommodation, integral garage, and attractive garden. Walking distance to St Annes Town Centre and the seafront.



Entrance Hall

Wooden obscure glazed door to the front and adjacent windows. Staircase leading to the first floor. Carpeted flooring, radiator, coving, ceiling light and under stairs storage. Doors leading to the following rooms:

Lounge

Double glazed bay window to the front. Carpeted flooring, coving, radiator, TV aerial point, and feature fireplace with inset gas fire and stone stepped hearth. Opening to:

Dining Room

Double glazed sliding doors to the rear leading to Conservatory. Coving, radiator, ceiling light and carpeted flooring. Door to:

Kitchen

Double glazed window to the rear. Range of fitted wall and base units, with laminate work surfaces and inset single bowl stainless steel sink and drainer with chrome mixer tap. Laminate flooring, ceiling lights, wood panelled ceiling, and freestanding gas stove.
Door to:

Garage

Electric up and over door to the front. Obscure glazed door and window to the rear leading to the rear garden. Strip lighting, power and water points, with space and plumbing for washing machine and tumble dryer. Pedestal wash hand basin with twin taps. Fitted shelving. Wall mounted Main boiler.

Conservatory

Wood flooring and wall lights. Sliding patio doors to the rear garden.

First Floor Landing

Aforementioned staircase from the ground floor. Loft access hatch, ceiling light, carpeted flooring and airing cupboard housing hot water cylinder. Doors leading to the following rooms:

Master Bedroom

Originally two separate bedrooms, this spacious master bedroom has been combined to create a larger area. It features double glazed windows at the front, fitted mirrored wardrobes with sliding doors, ceiling lights, radiators, carpeted flooring, and additional built-in cupboards.

Bedroom Two

Double glazed window to the front. Coving, ceiling lights, radiator and carpeted flooring. Door to:

En-Suite

Obscure double glazed window to the rear. Three piece white suite comprising: step-in shower enclosure with glass screen door, wall mounted chrome controls and handheld shower attachment on riser rail; pedestal wash hand basin and twin chrome taps; and WC with handle flush. Tiled walls, wood flooring, radiator, ceiling light, coving and wall mounted mirrored vanity cabinet.

Bedroom Three

Double glazed window to the rear. Carpeted flooring, ceiling light, radiator and built-in storage cupboard.

External

To the front, a block paved driveway gives access to the garage. Lawned garden with planted borders.
To the rear, the garden has been laid to lawn with bordering plants, shrubs and a variety of fruit trees. Patio area with outside tap and external lighting.

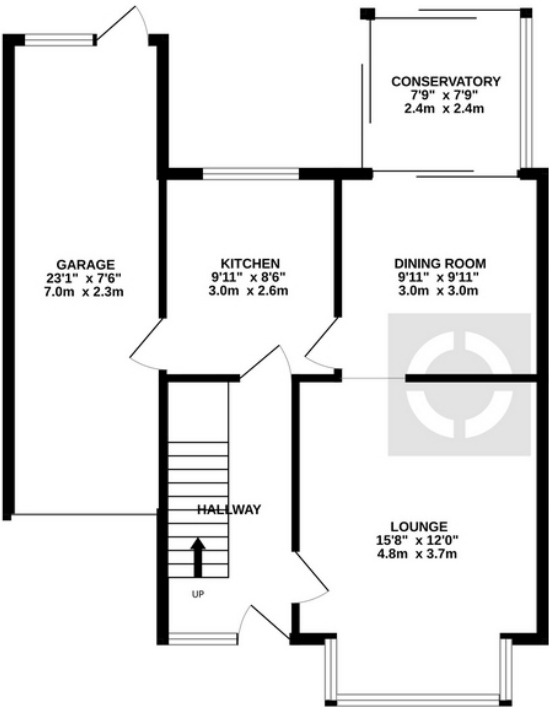
Disclaimer

You may download or store this material for your own personal use and research. You may NOT republish, retransmit, redistribute or otherwise make the material available to any party or make the same available on any website, online service or bulletin board of your own or of any other party or make the same available in hard copy or in any other media without the website owner's express prior written consent. The website owner's copyright must remain on all reproductions of material taken from this website. Please note we have not tested any apparatus, fixtures, fittings, or services. Interested parties must undertake their own investigation into the working order of these items. All measurements are approximate and photographs provided for guidance only.

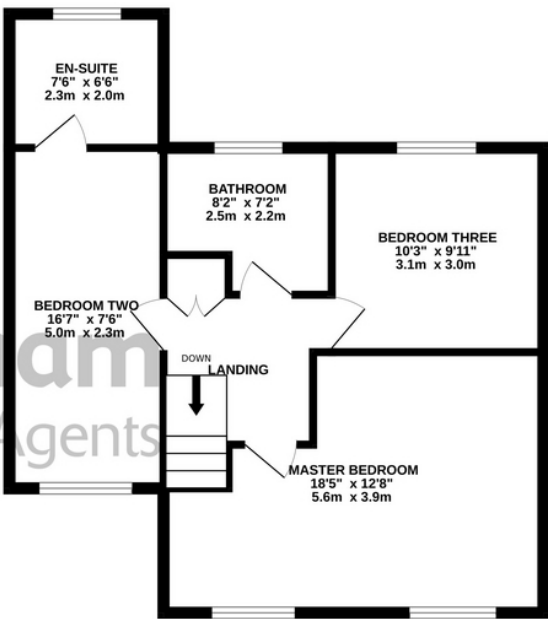


Floor Plans

GROUND FLOOR
674 sq.ft. (62.7 sq.m.) approx.



1ST FLOOR
589 sq.ft. (54.7 sq.m.) approx.



TOTAL FLOOR AREA : 1263 sq.ft. (117.4 sq.m.) approx.

Whilst every attempt has been made to ensure the accuracy of the floorplan contained here, measurements of doors, windows, rooms and any other items are approximate and no responsibility is taken for any error, omission or mis-statement. This plan is for illustrative purposes only and should be used as such by any prospective purchaser. The services, systems and appliances shown have not been tested and no guarantee as to their operability or efficiency can be given.
Made with Metropix ©2024