



Lytham
Estate Agents

Lytham Estate Agents
2a Clifton Square,
FY8 5JP

Telephone: 01253 796996

Email:
info@lythamestateagents.co.uk

Website:
www.lythamestateagents.co.uk/



**Flat 12, Fairhaven Court 65 Woodlands Road, Ansdell,
Lancashire FY8 1YJ**

£72,500

One Bedroom First Floor Apartment Within The Over 55's Fairhaven Court Complex. Steps Away From Fairhaven Lake And The Seafront. Ideal Location Close To Local Shops And Amenities. Chain Free!



Hallway

Wooden front door gives access to the apartment. Opens into a carpeted hallway with electric radiator and storage cupboard housing hot water cylinder.

Shower Room

Fully tiled suite comprising step in shower with electric shower, wc with handle flush and pedestal wash basin with twin taps. Electric radiator.

Bedroom One

Carpeted double bedroom with fitted wardrobes. Electric radiator and front facing window.

Living Room

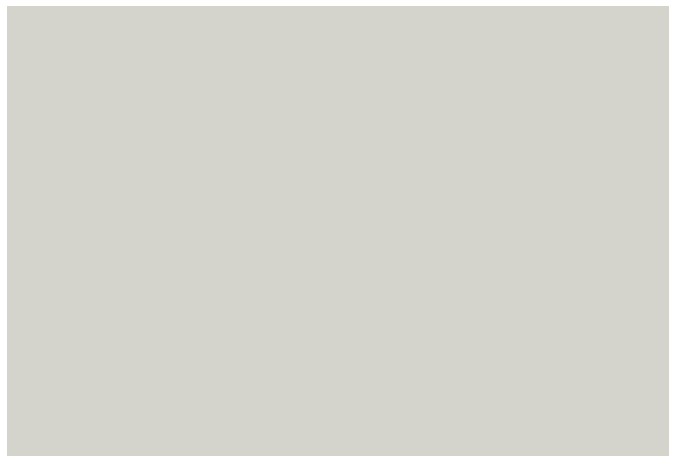
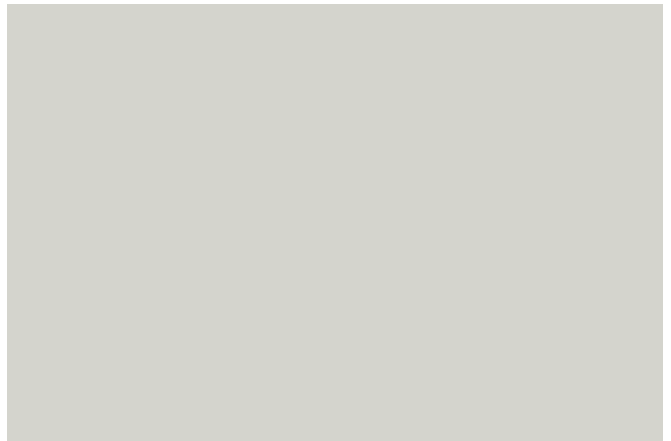
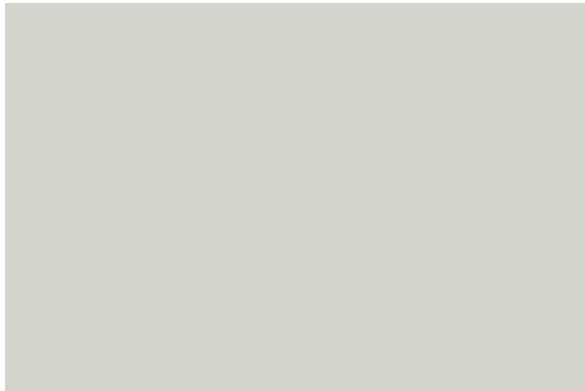
Carpeted. Bay window to the front. Intercom system. Electric radiator and electric fire. Opening to

Kitchen

Vinyl flooring. Range of wall and base units with laminate worksurface and tile splash back. Wall mounted electric oven, electric hob. Wash basin with drainer and mixer tap.

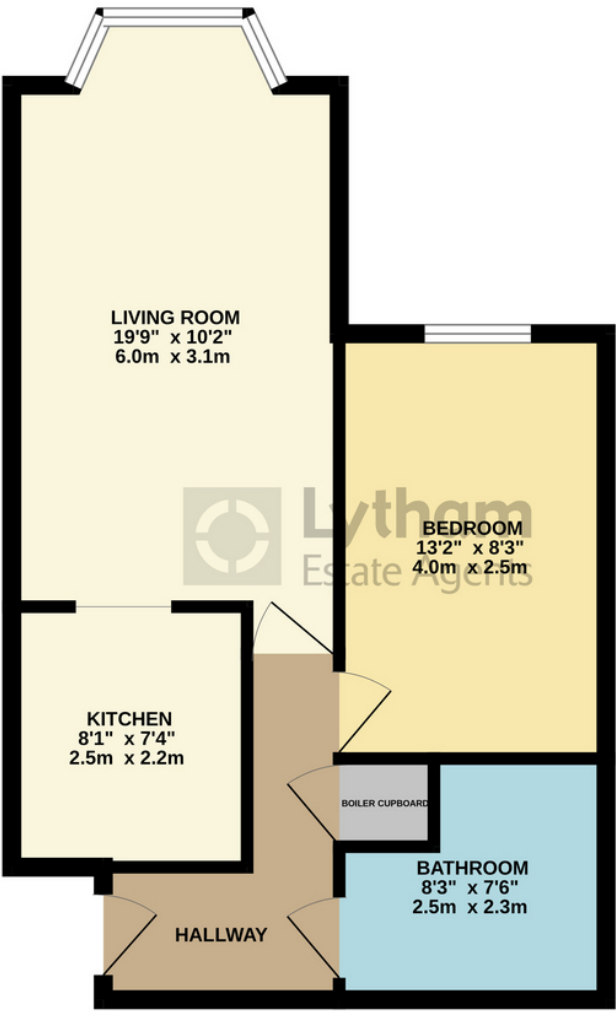
Disclaimer

You may download or store this material for your own personal use and research. You may NOT republish, retransmit, redistribute or otherwise make the material available to any party or make the same available on any website, online service or bulletin board of your own or of any other party or make the same available in hard copy or in any other media without the website owner`s express prior written consent. The website owner's copyright must remain on all reproductions of material taken from this website. Please note we have not tested any apparatus, fixtures, fittings, or services. Interested parties must undertake their own investigation into the working order of these items. All measurements are approximate and photographs provided for guidance only.



Floor Plans

GROUND FLOOR
459 sq.ft. (42.6 sq.m.) approx.



TOTAL FLOOR AREA : 459 sq.ft. (42.6 sq.m.) approx.
Whilst every attempt has been made to ensure the accuracy of the floorplan contained here, measurements of doors, windows, rooms and any other items are approximate and no responsibility is taken for any error, omission or mis-statement. This plan is for illustrative purposes only and should be used as such by any prospective purchaser. The services, systems and appliances shown have not been tested and no guarantee as to their operability or efficiency can be given.
Made with Metropix ©2024