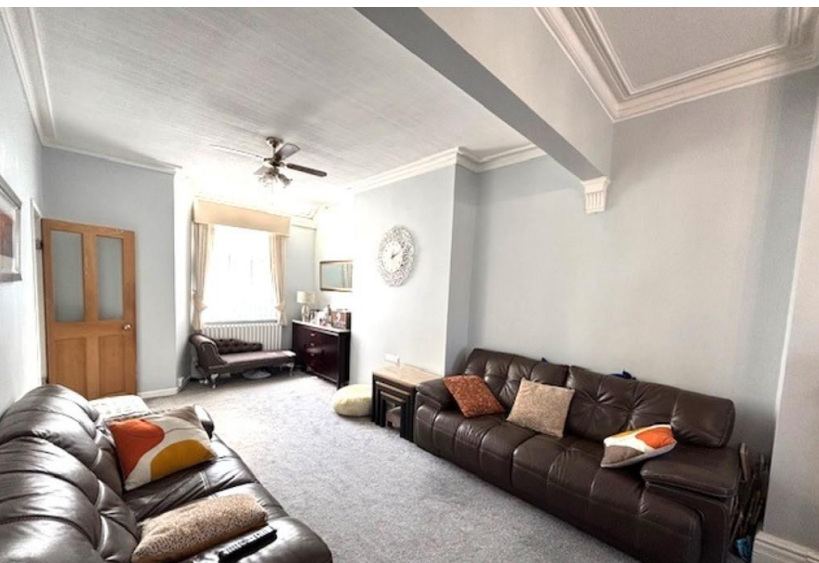


# EMMA HATTON LTD



- Spacious Period Four Double Bedroom Mid Terrace
- Open plan lounge/Dining room
- Modern fitted dining Kitchen
- Conservatory

## 79 Northumberland Road, Manchester , M16 9PG

Asking Price Of £495,000

Spacious Period Four Double Bedroomed Mid Terrace family home situated on desirable Northumberland Road overlooking Seymour Park, the accommodation provides ample family space for the growing family, entrance porch, reception hallway, open plan lounge/dining room, Modern fitted dining kitchen, Conservatory, downstairs W.C, Four double bedrooms over two floors, Family bathroom, ensuite shower room to the impressive master bedroom. The property also benefits from usable cellars with three chambers. Gardens to front and rear. Within walking distance of outstanding Seymour Park Community Primary, Seymour Park and Hullard Park.