

Agents Note: Whilst every care has been taken to prepare these sales particulars, they are for guidance purposes only. All measurements are approximate and for general guidance purposes only and whilst every care has been taken to ensure their accuracy, they should not be relied upon and potential buyers are advised to recheck the measurements.

396 Barlow Moor Road
Manchester
Lancashire
M21 8BH

www.emmahatton.co.uk
admin@emmahatton.co.uk
0161 860 0870



EMMA
HATTON
LTD

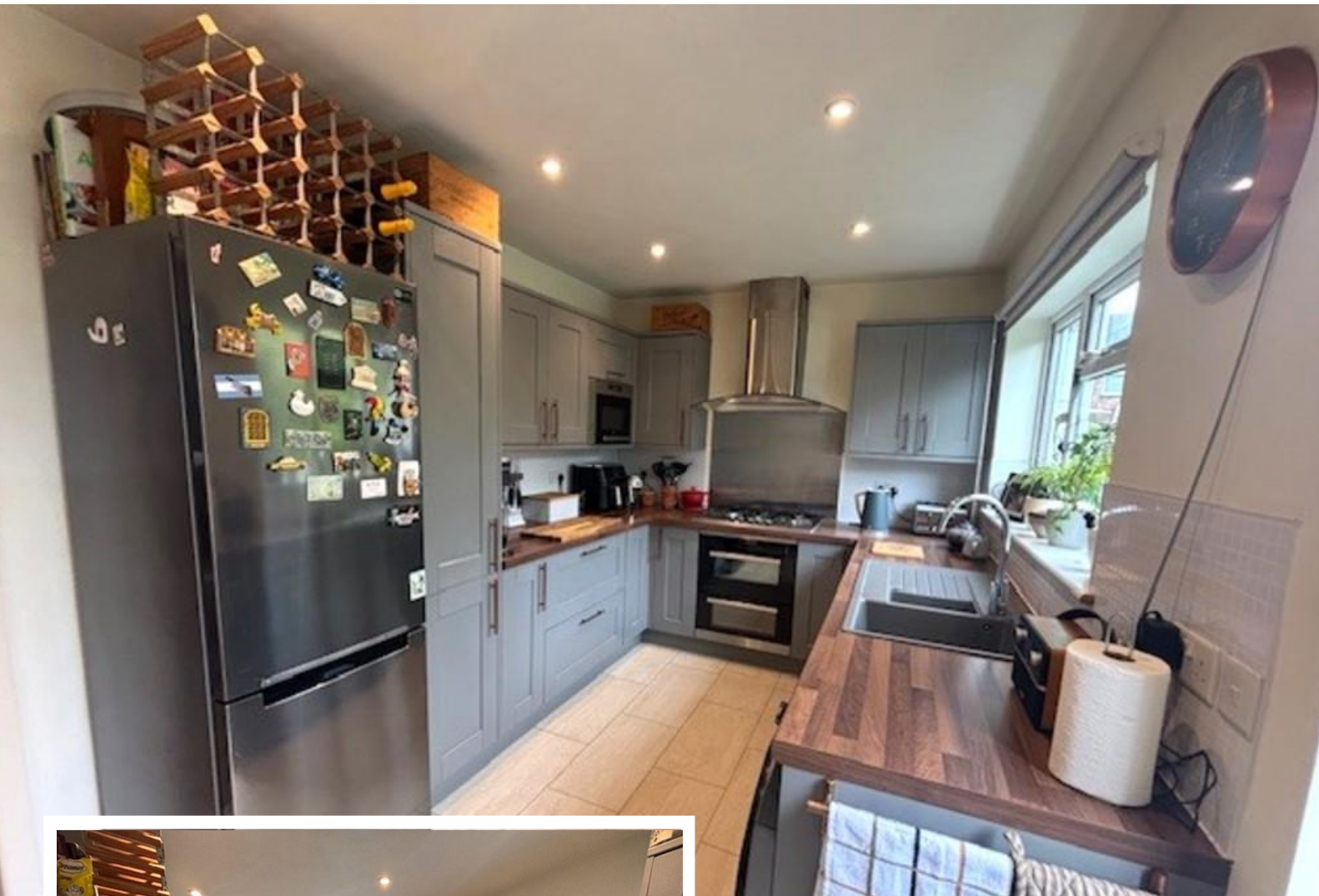
7 Burrows Avenue

£339,950

- Well Presented Quasi Semi
- Ideal Family home
- Lounge
- Modern fitted dining kitchen
- Three bedrooms
- Bathroom
- Downstairs W.C
- Garden to front



7 Burrows Avenue, Chorlton, Manchester, M21 7LS



Property Description

Well presented Three bedroomed end Quasi semi house, entrance vestibule, spacious lounge, modern fully fitted dining kitchen, downstairs W.C, Three bedrooms, bathroom, warmed by gas central heating, UPVC double glazed, Garden to front, large lawned garden to rear, The property is just a short walk from the metrolink station, Chorlton Water Park and Chorlton Village, offering excellent local amenities, outstanding schools, and green spaces perfect for outdoor activities. The property would be ideal for a family or FTB.

ENTRANCE VESTIBULE

LOUNGE: 15' 8" x 12' 9" (4.80m x 3.90m)

KITCHEN: 15' 8" x 8' 2" (4.80m x 2.50m)

DOWNSTAIRS W.C

BEDROOM ONE: 12' 9" x 11' 7" (3.90m x 3.54m)

BEDROOM TWO: 13' 0" x 9' 0" (3.98m x 2.76m)



BEDROOM THREE: 9' 7" x 7' 5" (2.94m x 2.28m)
BATHROOM: WITH TWO PIECE BATHROOM SUITE.
OUTSIDE: Garden to front, Large lawned garden to rear

