

Agents Note: Whilst every care has been taken to prepare these sales particulars, they are for guidance purposes only. All measurements are approximate and for general guidance purposes only and whilst every care has been taken to ensure their accuracy, they should not be relied upon and potential buyers are advised to recheck the measurements.



EMMA
HATTON
LTD

45 Acres Road

Asking Price Of £425,000

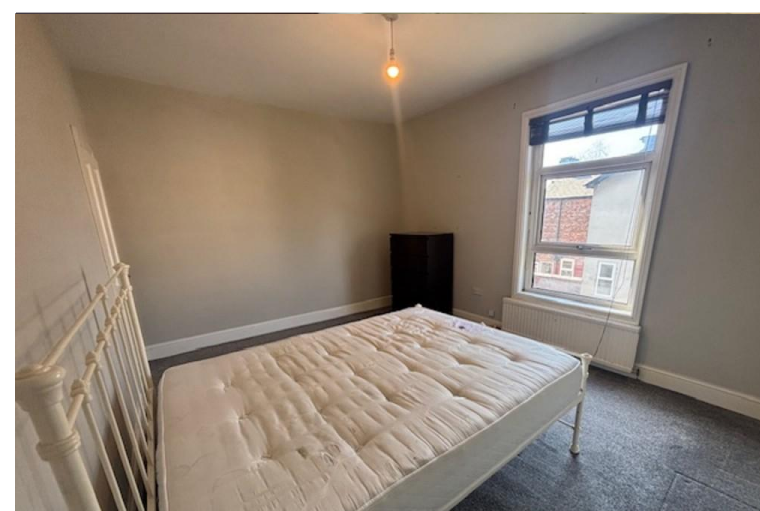
- Extended Period end Terrace House
- Situated on Desirable Acres Road
- Spacious open plan lounge/Dining room
- Fitted kitchen
- Two double bedrooms
- Large Modern bathroom
- Warmed by gas central heating
- Courtyard garden



45 Acres Road , Chorlton, Manchester , M21 9EB



OUTSIDE: To the front of the property there is a driveway providing off parking. Small courtyard garden to rear.



Property Description

Extended Period end-terrace house situated on the desirable Acres Road in the Chorlton Green just off vibrant Beech Road. Generous open-plan lounge/dining, extended fitted kitchen, two double bedrooms, extended good size bathroom, driveway providing off road parking to the front, Courtyard garden to rear. Conveniently located within walking distance of local independent shops, restaurants and bars. Within easy reach of the motorway network and metro stations. Internal viewing of this spacious accommodation is highly recommended.

OPEN PLAN LOUNGE/DINING ROOM: 9' 4" x 13' 3"
(2.86m x 4.06m)

KITCHEN: 13' 3" x 9' 4" (4.06m x 2.86m)

BEDROOM ONE: 14' 10" x 11' 9" (4.54m x 3.60m)

BEDROOM TWO: 11' 9" x 9' 3" (3.60m x 2.84m)

BATHROOM: 10' 9" x 9' 5" (3.30m x 2.88m)

