

Score	Energy rating	Current	Potential
92+	A		
81-91	B	81 B	82 B
69-80	C		
55-68	D		
39-54	E		
21-38	F		
1-20	G		

Agents Note: Whilst every care has been taken to prepare these sales particulars, they are for guidance purposes only. All measurements are approximate and for general guidance purposes only and whilst every care has been taken to ensure their accuracy, they should not be relied upon and potential buyers are advised to recheck the measurements.

396 Barlow Moor Road
Manchester
Lancashire
M21 8BH

www.emmahatton.co.uk
admin@emmahatton.co.uk
0161 860 0870



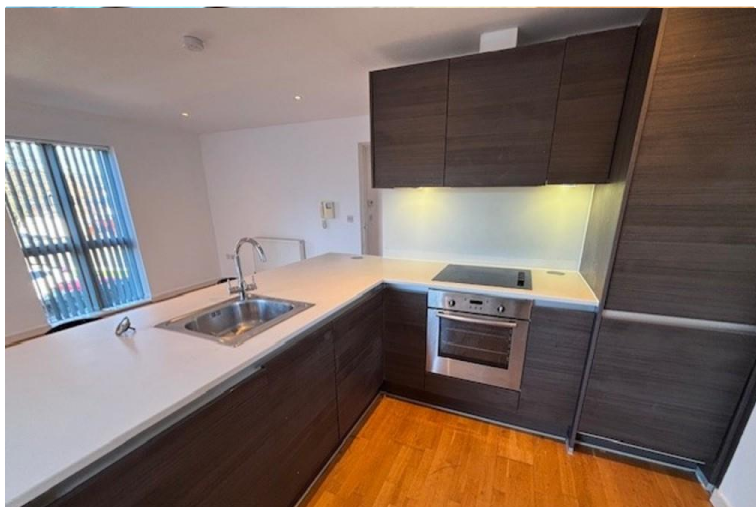
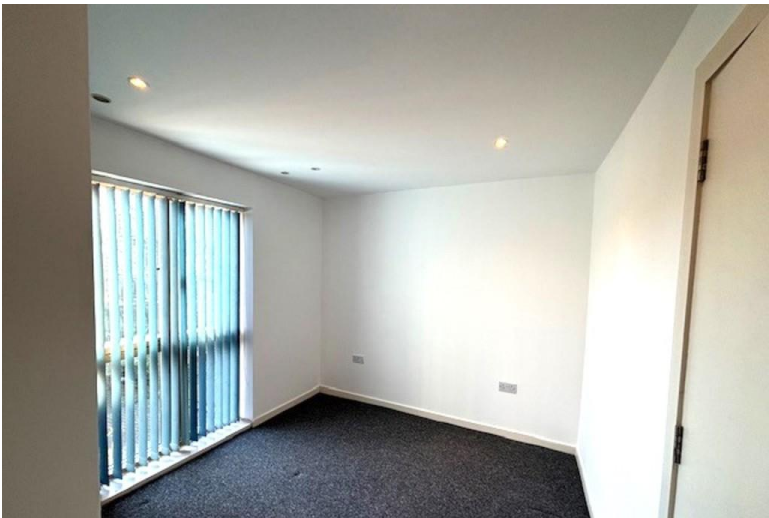
EMMA
HATTON
LTD

Barlow Moor Road , Chorlton ,
Manchester

Asking Price Of £275,000

- Spacious first floor apartment
- Entrance Hallway
- Large open plan lounge/dining kitchen
- French doors to balcony
- Two double bedrooms
- Main Bedroom with ensuite shower room
- Contemporary bathroom with shower
- Warmed by GCH





Property Description

ENTRANCE HALLWAY

OPEN PLAN LOUNGE / FITTED KITCHEN

19' 03" x 19.06' (5.87m x 5.79m)

BEDROOM ONE

8' 47" x 12' 11" (3.63m x 3.94m)

BEDROOM TWO

8' 97" x 11' 61" (4.9m x 4.9m)

BATHROOM

ENSUITE SHOWER ROOM

OUTSIDE

Gated communal off road parking

Modern purpose built first floor apartment, entrance hallway, large open plan lounge / modern fitted kitchen with French doors to balcony, two double bedrooms, master with ensuite shower room, bathroom, warmed by gas central heating, UPVC double glazed windows, solid oak flooring, secure gated off roar parking, excellent central location, viewing essential

