



EMMA
HATTON
LTD

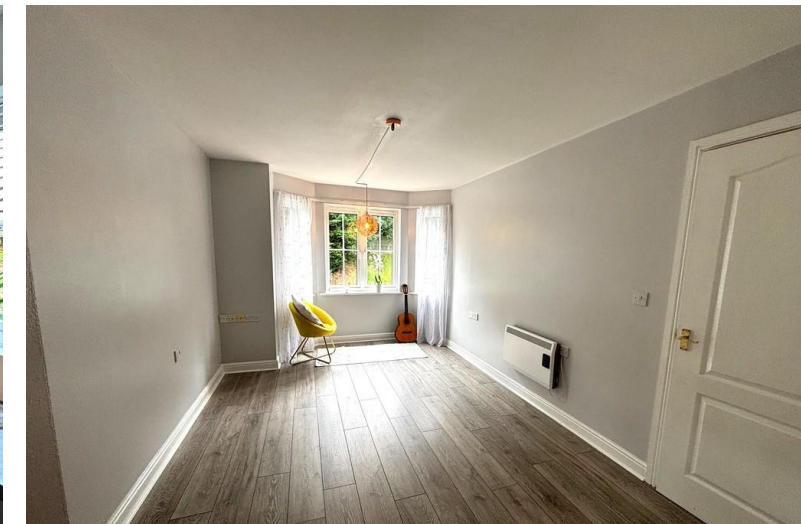
Chelsfield Grove, Chorlton

Asking Price Of £210,000

Score	Energy rating	Current	Potential
92+	A		
81-91	B		
69-80	C	72 C	72 C
55-68	D		
39-54	E		
21-38	F		

Agents Note: Whilst every care has been taken to prepare these sales particulars, they are for guidance purposes only. All measurements are approximate and for general guidance purposes only and whilst every care has been taken to ensure their accuracy, they should not be relied upon and potential buyers are advised to recheck the measurements

- Purpose built first floor apartment
- Lounge on to Fitted kitchen
- Two double bedrooms
- Newly fitted shower room
- Electric heating
- UPVC double glazed
- Communal gardens
- Bike Store

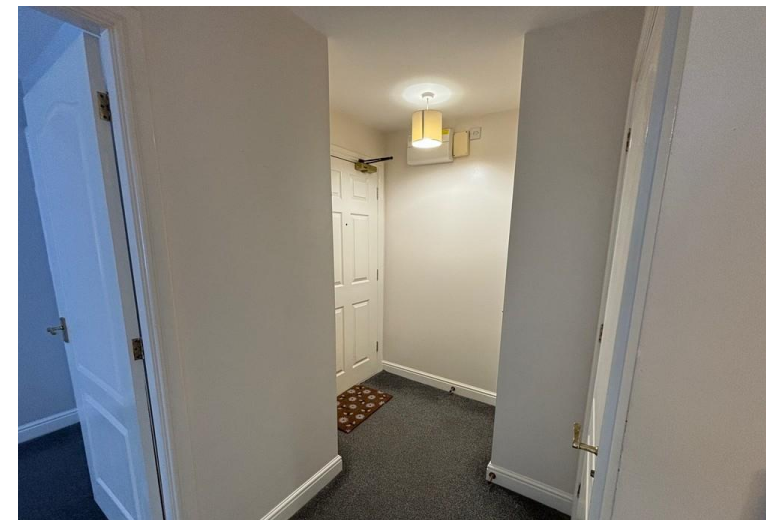
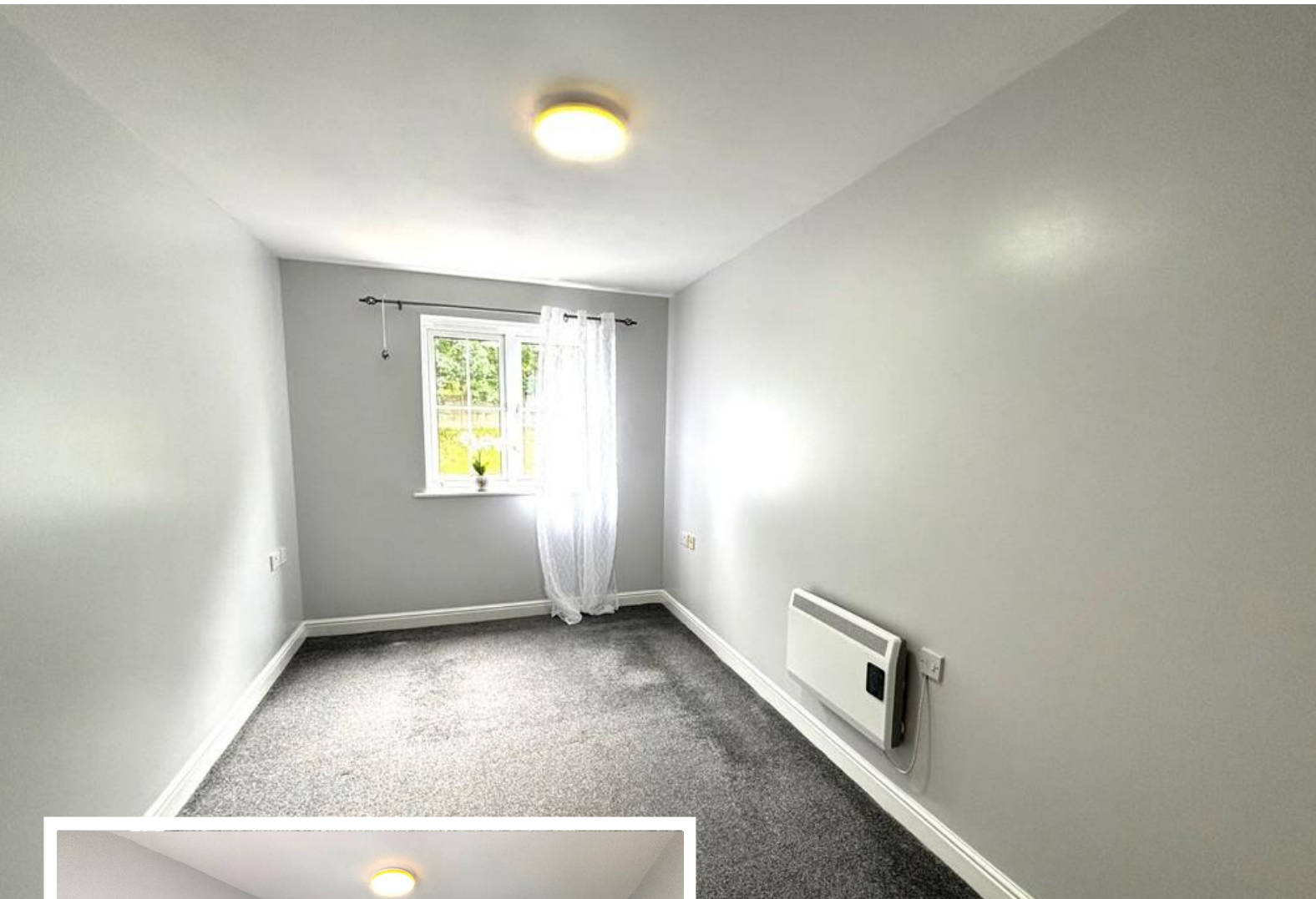


396 Barlow Moor Road
Manchester
Lancashire
M21 8BH

www.emmahatton.co.uk
admin@emmahatton.co.uk
0161 860 0870

rightmove.co.uk
The UK's number one property website

37 Chelsfield Grove, Chorlton, Manchester, M21 7SU



Property Description

ENTRANCE HALLWAY

LOUNGE

14ft' 10in" x 9ft' 8in" (4.52m x 2.95m)

KITCHEN

6ft' 4in" x 9ft' 8in" (1.93m x 2.95m)

BEDROOM ONE

15ft' 7in" x 8ft' 2in" (4.75m x 2.49m)

BEDROOM TWO

10ft' 8in" x 8ft' 6in" (3.25m x 2.59m)

BATHROOM

9ft' 5in" x 5ft' 6in" (2.87m x 1.68m)

