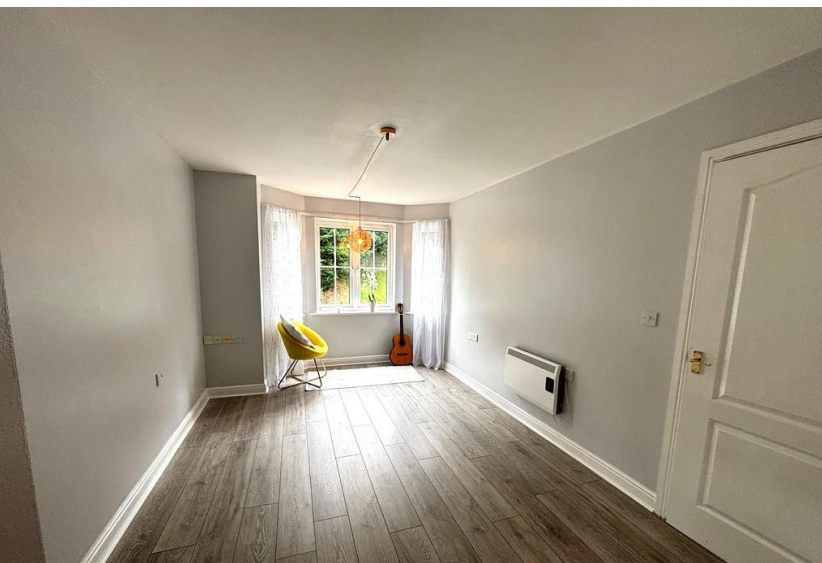


EMMA
HATTON
LTD



- Purpose built first floor apartment
- Lounge on to Fitted kitchen
- Two double bedrooms
- Newly fitted shower room

37 Chelsfield Grove, Manchester, M21 7SU

Asking Price Of £210,000

****NO CHAIN** READY TO MOVE INTO**** Well presented Purpose Built Two Double Bedroomed First floor apartment situated in sought after location in Chorlton, Within walking of St Werburghs road and Mauldeth Rd Metrolink station. Comprising of secure entry system and well kept communal areas, Entrance hallway open plan lounge through to the kitchen Two double bedrooms, master with built in wardrobes. Newly fitted shower room Warmed by Electric heating, UPVC double glazed throughout, Communal gardens, allocated off road parking. Ideal or FTB. Viewing essential.