



Connells

Stephenson Way
Corby



Property Description

This two bedroom semi-detached property is situated on the Lloyds estate of Corby. Surrounding this property are many local amenities including local shops, primary school, play parks and easy access to Corby Town Centre either by car or bus. The property itself is a perfect first time buy or investment as a buy to let. Offering generous living space, double bedrooms and family bathroom, along with driveway for multiple vehicles and generous rear garden, this property is a must see.

On entering the property you are greeted by the entrance hall which houses the stairs to the first floor along with access to the lounge. The lounge is of a good size and is perfect place to relax of an evening. The kitchen is to the rear of the property and leads through to the conservatory, a perfect place to entertain family and friends. The conservatory opens to the garden through French patio doors and perfect for allowing the outdoors in.

The first floor houses the two bedrooms, both of which are good size doubles and boast built in wardrobes. Completing this floor is the family bathroom.

Externally of the property is a generous driveway which is suitable for multiple vehicles. The rear garden can be accessed by a timber gate to the side of the property and is of low maintenance and fully enclosed, ideal for young children and pets

Ground Floor

Entrance Hall

External door to the front, stairs to first floor.

Lounge

12' 10" x 12' 5" (3.91m x 3.78m)

Double glazed window to the front, feature fire place, exposed brick work, picture rail, coving.

Kitchen

15' 8" x 8' 11" (4.78m x 2.72m)

Double glazed window to the rear, door to conservatory, a range of wall and base units with rolled edge work surfaces, sink drainer with mixer tap, integrated oven and hob with stainless steel cooker hood, tiled splash backs, coving.

Conservatory

9' 10" x 9' 2" (3.00m x 2.79m)

French patio doors to the garden, windows.

First Floor

Landing

Bedroom One

11' x 9' 10" (3.35m x 3.00m)

Double glazed window to the front, built in wardrobes.

Bedroom Two

11' 10" x 7' 10" (3.61m x 2.39m)

Double glazed window to the rear, built in wardrobe.

Bathroom

Double glazed window to the side, bath, wash hand basin set in vanity unit, WC, tiled splash backs, heated towel rail.

Externally

Driveway

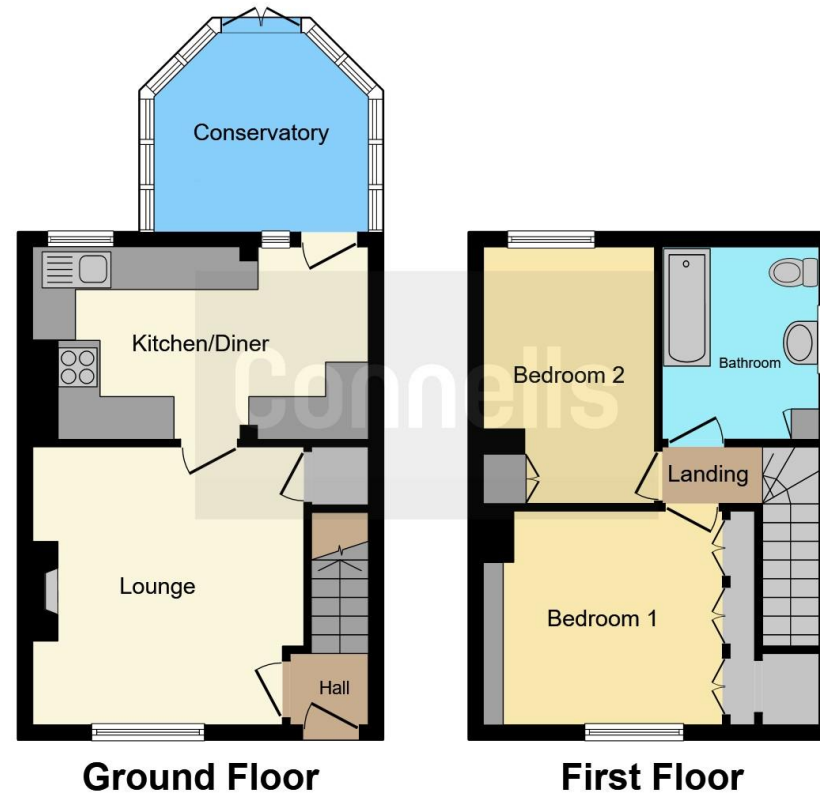
Rear Garden

Fully enclosed by timber fencing, gated access, laid to lawn.









This floor plan is for illustrative purposes only. It is not drawn to scale. Any measurements, floor areas (including any total floor area), openings and orientation are approximate. No details are guaranteed, they cannot be relied upon for any purpose and they do not form part of any agreement. No liability is taken for any error, omission or misstatement. A party must rely upon its own inspection(s). Powered by www.focalagent.com

To view this property please contact Connells on

T 01536 747320
E oakleyvale@connells.co.uk

10 Charter Court Butland Road Oakley Vale
 CORBY NN18 8QT

EPC Rating: D Council Tax
 Band: A

Tenure: Freehold

view this property online connells.co.uk/Property/OKV307771



1. MONEY LAUNDERING REGULATIONS Intending purchasers will be asked to produce identification documentation at a later stage and we would ask for your co-operation in order that there will be no delay in agreeing the sale. 2. These particulars do not constitute part or all of an offer or contract. 3. The measurements indicated are supplied for guidance only and as such must be considered incorrect. Potential buyers are advised to recheck measurements before committing to any expense. 4. We have not tested any apparatus, equipment, fixtures, fittings or services and it is in the buyers interest to check the working condition of any appliances.

Connells Residential is registered in England and Wales under company number 1489613, Registered Office is Cumbria House, 16-20 Hockliffe Street, Leighton Buzzard, Bedfordshire, LU7 1GN. VAT Registration Number is 500 2481 05.

See all our properties at www.connells.co.uk | www.rightmove.co.uk | www.zoopla.co.uk

Property Ref: OKV307771 - 0002