



Connells

Siskin Close  
Corby





## Property Description

This well-presented three-bedroom end-terraced home offers spacious and versatile living across three floors, ideal for families or professionals seeking comfort and convenience.

The ground floor features a welcoming entrance hall leading to a modern kitchen with ample storage and worktop space, a convenient downstairs W.C., and a generous lounge/dining area at the rear with French doors opening onto a fully enclosed rear garden, perfect for outdoor entertaining.

On the first floor, there are two well-proportioned bedrooms and a stylish family bathroom with contemporary fittings. The second floor boasts an impressive master bedroom suite featuring an en-suite shower room and built-in storage. Externally, the property benefits from a private driveway and garage, providing secure off-road parking.

Located in Oakley Vale, Corby, the property is close to supermarkets, well regarded primary and secondary schools, and leisure facilities, with excellent transport links to the A43, A14, and Corby train station for direct services to London.

## Ground Floor

### Entrance Hall

Entrance door to the front, stairs to the first floor, under stairs storage cupboard.

### Kitchen

11' 8" x 6' 3" ( 3.56m x 1.91m )

Window to the front, a range of wall and base units with rolled edge work surfaces, sink drainer with mixer tap, integrated oven and hob with cooker hood, integrated appliances, space for washing machine, tiled splash backs, vinyl flooring, radiator.

### Lounge

15' 6" x 12' 2" ( 4.72m x 3.71m )

French patio doors and windows to the rear, carpet flooring, radiator.

### Cloakroom

Pedestal wash hand basin, low level WC.

## First Floor

### Bedroom Two

12' 2" x 10' 2" ( 3.71m x 3.10m )  
Window to the rear, carpet flooring, radiator.

### Bedroom Three

11' 8" x 6' 3" ( 3.56m x 1.91m )  
Window to the front, carpet flooring, radiator.

### Family Bathroom

Window to the side, bath with shower over, pedestal wash hand basin, low level WC, tiled splash backs. vinyl flooring.

## Second Floor

### Bedroom One

19' 1" x 12' 2" ( 5.82m x 3.71m )  
Windows to the rear, built in wardrobe, carpet flooring, radiator.

### Ensuite

Window to the front, walk in shower cubicle, pedestal wash hand basin, low level WC, tiled splash backs, vinyl flooring.

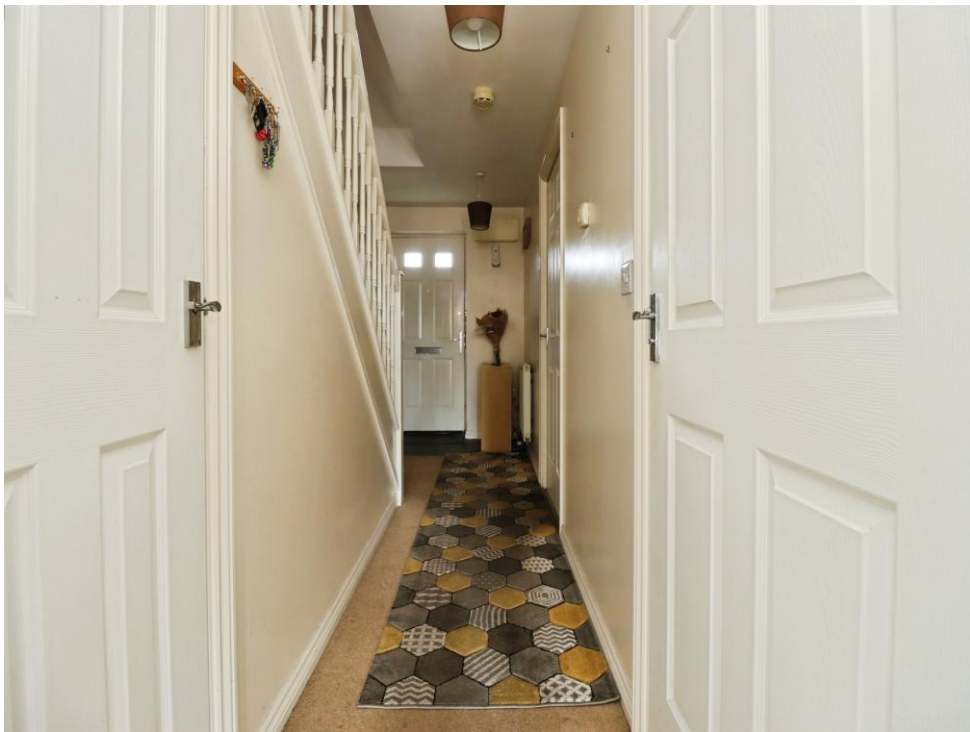
## Externally

### Rear Garden

Fully enclosed by timber fencing, pathway, laid to lawn.





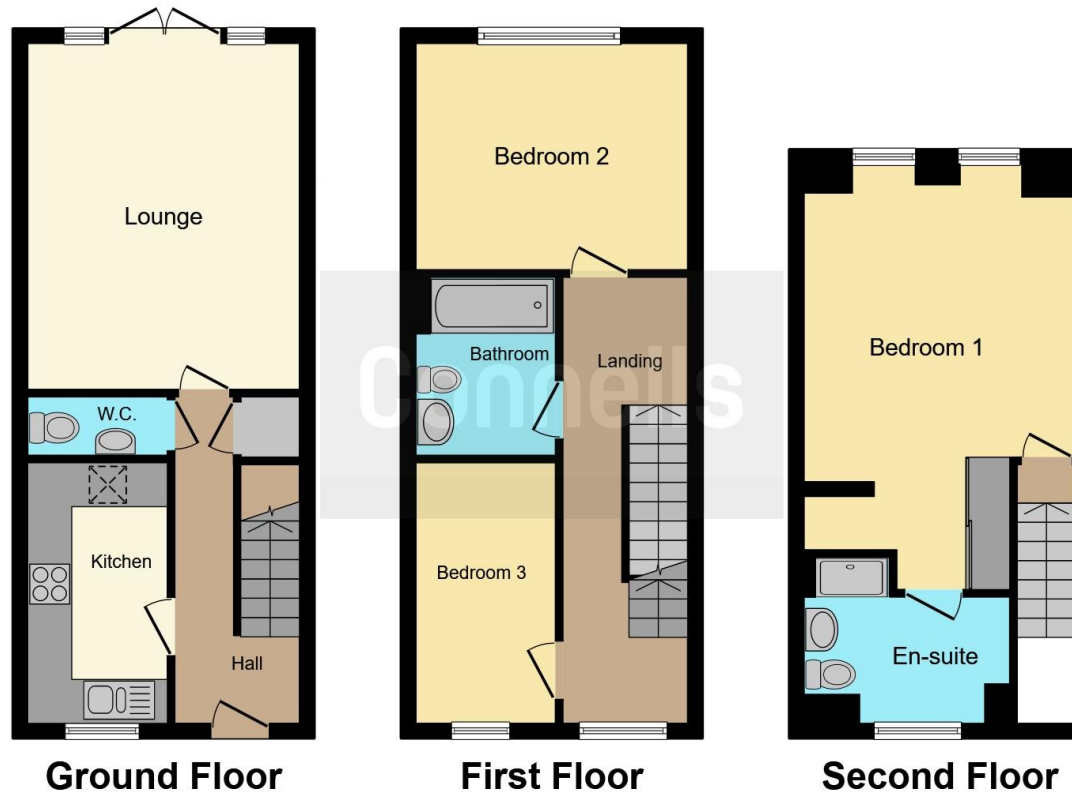






AI-generated content





This floor plan is for illustrative purposes only. It is not drawn to scale. Any measurements, floor areas (including any total floor area), openings and orientation are approximate. No details are guaranteed, they cannot be relied upon for any purpose and they do not form part of any agreement. No liability is taken for any error, omission or misstatement. A party must rely upon its own inspection(s). Powered by [www.focalagent.com](http://www.focalagent.com)

To view this property please contact Connells on

**T 01536 747320**  
**E [oakleyvale@connells.co.uk](mailto:oakleyvale@connells.co.uk)**

10 Charter Court Butland Road Oakley Vale  
 CORBY NN18 8QT

EPC Rating: B Council Tax  
 Band: C

Tenure: Freehold

**view this property online [connells.co.uk/Property/OKV307470](http://connells.co.uk/Property/OKV307470)**



1. MONEY LAUNDERING REGULATIONS Intending purchasers will be asked to produce identification documentation at a later stage and we would ask for your co-operation in order that there will be no delay in agreeing the sale. 2. These particulars do not constitute part or all of an offer or contract. 3. The measurements indicated are supplied for guidance only and as such must be considered incorrect. Potential buyers are advised to recheck measurements before committing to any expense. 4. We have not tested any apparatus, equipment, fixtures, fittings or services and it is in the buyers interest to check the working condition of any appliances.

Connells Residential is registered in England and Wales under company number 1489613, Registered Office is Cumbria House, 16-20 Hockliffe Street, Leighton Buzzard, Bedfordshire, LU7 1GN. VAT Registration Number is 500 2481 05.

**See all our properties at [www.connells.co.uk](http://www.connells.co.uk) | [www.rightmove.co.uk](http://www.rightmove.co.uk) | [www.zoopla.co.uk](http://www.zoopla.co.uk)**

Property Ref: OKV307470 - 0005