



Connells

Franklin Fields  
Corby



## Property Description

This unique detached property is situated in the Lloyds area of Corby, Originally this property was two semi detached properties, which has now been converted into a four bedroom detached family home. This property comprises of four well proportioned double bedrooms with family bathroom, a shower room to the ground floor, two reception rooms, two kitchens along with driveway for multiple vehicles, front garden and rear gardens, along with original features such as the open fire places. Bedroom two is a versatile room, it is the perfect room to have as a nursery, walk in wardrobe or even a home office. This property has the potential to become your forever family home, alternatively to put back into two properties.

The property is surrounded by many local amenities including Phoenix Parkway Shopping Centre, local shops, primary school, along with easy transport links to Corby Train Station and Corby Town Centre.

## Ground Floor

### Kitchen/Breakfast Room

17' 11" x 9' 10" ( 5.46m x 3.00m )

### Lounge

18' 2" x 10' 10" ( 5.54m x 3.30m )

### Lounge Two

18' x 10' 10" ( 5.49m x 3.30m )

### Kitchen Two

9' 11" x 6' 8" ( 3.02m x 2.03m )

### Shower Room

## First Floor

### Bedroom One

18' 1" x 9' 11" ( 5.51m x 3.02m )

### Bedroom Two

10' 11" x 10' 6" ( 3.33m x 3.20m )

### Bedroom Three

11' 3" x 10' ( 3.43m x 3.05m )

### Bedroom Four

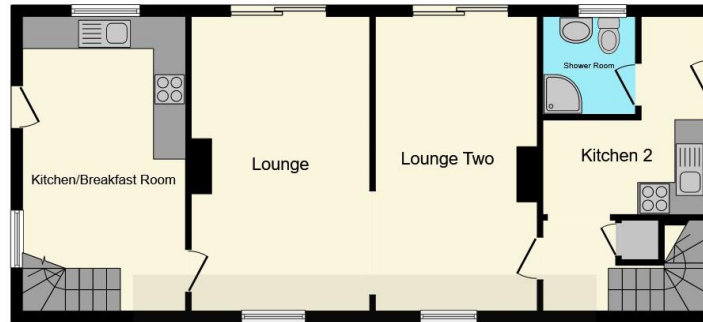
11' 3" x 10' ( 3.43m x 3.05m )

### Bathroom









**Ground Floor**



**First Floor**

This floor plan is for illustrative purposes only. It is not drawn to scale. Any measurements, floor areas (including any total floor area), openings and orientation are approximate. No details are guaranteed, they cannot be relied upon for any purpose and they do not form part of any agreement. No liability is taken for any error, omission or misstatement. A party must rely upon its own inspection(s). Powered by [www.focalagent.com](http://www.focalagent.com)

To view this property please contact Connells on

**T 01536 747320**

**E [oakleyvale@connells.co.uk](mailto:oakleyvale@connells.co.uk)**

10 Charter Court Butland Road Oakley Vale  
CORBY NN18 8QT

**EPC Rating: D**

Tenure: Freehold

**view this property online [connells.co.uk/Property/OKV306632](http://connells.co.uk/Property/OKV306632)**



1. MONEY LAUNDERING REGULATIONS Intending purchasers will be asked to produce identification documentation at a later stage and we would ask for your co-operation in order that there will be no delay in agreeing the sale. 2. These particulars do not constitute part or all of an offer or contract. 3. The measurements indicated are supplied for guidance only and as such must be considered incorrect. Potential buyers are advised to recheck measurements before committing to any expense. 4. We have not tested any apparatus, equipment, fixtures, fittings or services and it is in the buyers interest to check the working condition of any appliances.

Connells Residential is registered in England and Wales under company number 1489613, Registered Office is Cumbria House, 16-20 Hockliffe Street, Leighton Buzzard, Bedfordshire, LU7 1GN. VAT Registration Number is 500 2481 05.

**See all our properties at [www.connells.co.uk](http://www.connells.co.uk) | [www.rightmove.co.uk](http://www.rightmove.co.uk) | [www.zoopla.co.uk](http://www.zoopla.co.uk)**

Property Ref: OKV306632 - 0003