

An exceptional period house in fabulous gardens and grounds.

Wrexham Road, Overton, Wrexham, LL13 0HF



7



4



3

Guide Price £1,350,000

savills



An exceptional period house in fabulous gardens and grounds.

Wrexham Road, Overton, Wrexham, LL13 0HF

 7  4  3

Guide Price £1,350,000

savills



An exceptional period house in fabulous gardens and grounds.

Wrexham Road, Overton, Wrexham, LL13 0HF



7



4



3

Guide Price £1,350,000



About this property

Description

The Brow is a very attractive house built in 1820, with earlier origins, and as stated in the Grade II Listing was, "built to exploit a picturesque, riverside location". It is in a quite spectacular position with incredible south-westerly views over the valley.

The house was home to Charles Darwin's sister, Marianne Parker, and Charles spent many weekends and holidays at The Brow.

The front door is set within an enclosed porch and opens into a hall with the principal reception rooms to either side being an elegant drawing room, a dining room and study. They are lovely rooms, full of character with wooden floors, full height windows views over the grounds and beyond. The family kitchen has a tiled floor and French doors to the garden and an Aga. There are steps down from the hall to a play room, also offering access to the garden and the vaulted cellar provides useful storage. There is also a back kitchen/utility room and boot room.

The first floor is approached via stairs from the hall and has 7 bedrooms and 4 bathrooms, 3 of which are en suite.

The coach house (Low Brow)

Low brow is a impressive contemporary conversion of the former coach

house, designed by internationally renowned architect, Alex Michaelis. It has again been designed around the spectacular view and includes open plan living space with a hall sitting room and kitchen, 2 ground floor en suite bedrooms and on the first floor a study/bedroom and a bedroom with en suite bathroom. Outside is a terrace ideal for dining, entertaining and sunbathing.

Gardens and grounds

There are over 5 acres of part wooded gardens and grounds including a kitchen garden, an area known as the "edible forest", extensive lawns and direct access to both the village amenities and beautiful walks beside the River Dee.

An exceptional period house in fabulous gardens and grounds.

Wrexham Road, Overton, Wrexham, LL13 0HF



7



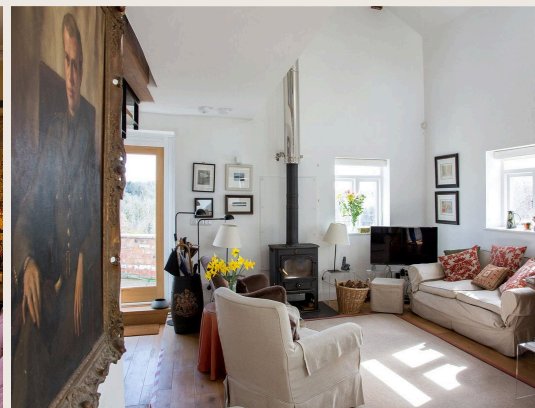
4



3

Guide Price £1,350,000

savills



An exceptional period house in fabulous gardens and grounds.

Wrexham Road, Overton, Wrexham, LL13 0HF

7 4 3

Guide Price £1,350,000



Plans

Approx. gross internal floor area
4,375 sq ft

Approximate Floor Area = 406.5 sq m / 4375 sq ft
Cellar = 62.6 sq m / 674 sq ft
Total = 469.1 sq m / 5049 sq ft



This floor plan has been drawn in accordance with RICS Property Measurement 2nd edition.
All measurements, including the floor area, are approximate and for illustrative purposes only. @fourwalls-group.com #62943

An exceptional period house in fabulous gardens and grounds.

Wrexham Road, Overton, Wrexham, LL13 0HF



7



4



3

Guide Price £1,350,000



Key Information

Local Authority
Wrexham

Council Tax
Band = .

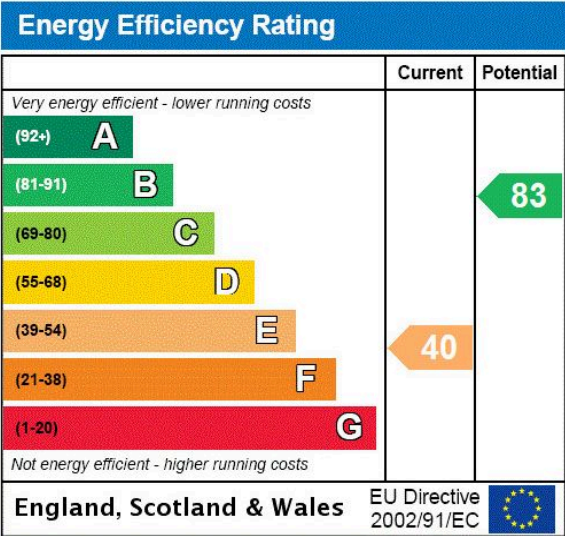
Tenure
Freehold

Services & Additional Information

EPC



EPC Rating = E

THE BROW



An exceptional period house in fabulous gardens and grounds.

Wrexham Road, Overton, Wrexham, LL13 0HF

 7  4  3 | Guide Price £1,350,000



Enquire



Rosie Rickett
Chester
01244 323234
rosie.rickett@savills.com

More Information



[View on website](#)



[View Digital Brochure](#)



[Property Search](#)

Viewing strictly by appointment

Published: August 2025
Property Ref: CSS240005



Important Notice: Savills, its clients, and any joint agents give notice that: 1: They are not authorised to make or give any representations or warranties in relation to the property either here or elsewhere, verbally or in writing, either on their own behalf or on behalf of their client or otherwise. They assume no responsibility for any statement that may be made in these particulars. These particulars do not form part of any offer or contract and must not be relied upon as statements or representations of fact. 2: Any areas, measurements or distances are approximate. The text, photographs and plans are for guidance only and are not necessarily comprehensive. 3: We rely on the seller and third parties to collate material information and while we have taken steps to verify information, you are advised to confirm all information you deem material to you, prior to exchanging contracts or concluding missives. 4: It should not be assumed that the property has all the necessary planning permissions, building regulation certificates or other consents. Purchasers must satisfy themselves by inspection or otherwise prior to exchanging contracts or concluding missives. 5: No testing of services, appliances, equipment, or facilities has been undertaken, nor have we carried out any survey or specialist reports. 6: A full list of any fitted carpets, curtains, light fittings, appliances, and other items fixed to the property which are to be included in the sale (or made available by separate negotiation) will be provided to you by our client's solicitors. 7: For information on how we manage personal data, please refer to our privacy policy at <https://www.savills.co.uk/footer/privacy-policy.aspx>