



Victoria Road,

Offers In Excess Of £90,000



Reeds Rains

• Since 1868 •

www.reedsrains.co.uk



Lynwood, Victoria Road, Wilmslow, Cheshire
Offers In Excess Of £90,000

****TOWN CENTRE LOCATION/ NO CHAIN/ LIFT FACILITY**** A fantastic 2nd floor retirement apartment located in Wilmslow town centre, there is a lift to all floors, an intercom video entry system, House Manager and a 24 hour emergency pull cord system within the apartments. The communal hallway leads to private accommodation which comprises: reception hallway, through Lounge/Dining Room, fitted kitchen overlooking the rear garden, with built in electric oven and hob, double bedroom and bathroom with three piece suite. Outside there are well maintained communal gardens. Parking subject to availability, charge may apply. Lynwood is linked via a glass atrium to its sister building Beechfield and the combined developments have communal lounge and a range of organised activities. Laundry room. There is a guest room available for relatives to stay for a small charge. NO CHAIN. EPC Grade Awaiting.

COMMUNAL ENTRANCE

Automatic door entry, entrance porch with intercom and inner glass doors opening into-

ENTRANCE HALL

3.09m x 2.10m (10'2" x 6'11")

Mirror front storage cupboard with hanging space, ceiling cornice, emergency pull cord (EPC), intercom.

LOUNGE

4.36m x 3.21m (14'4" x 10'6")

Square double glazed window to the front elevation, TV point, storage heater, space for a table and chairs, archway to the kitchen. Electric fire with decorative mantle. EPC

KITCHEN

2.11m x 2.08m (6'11" x 6'10")

Electric hob, electric oven, extractor hood, space for a fridge/ freezer, stainless steel sink with mixer tap, tiled splash backs.

BATHROOM

4.20m x 2.00m (13'9" x 6'7")

A re-fitted bathroom suite, fully tiled walls, a superb triple size walk-in shower with an electric shower unit, folding seat and a fixed glass screen. Vanity sink unit with a combined toilet with a concealed cistern, and storage cupboard, Full size wall mirror above the sink, extractor fan, chrome radiator, EPC.

BEDROOM

3.38m x 2.68m (11'1" x 8'9")
Window to the front elevation,
storage heater, EPC. Built in
wardrobe.

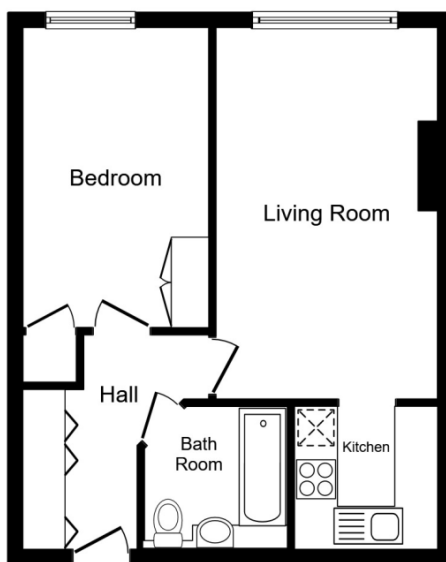
OUTSIDE

Well maintained communal gardens.

FLOOR PLAN



For full EPC please contact the branch



Floor Plan

Total floor area 42.0 sq. m. (452 sq. ft.) approx

This plan is for illustration purposes only and may not be representative of the property. Plan not to scale.

Powered by audioagent.com

