



9 FOUNDRY HOUSE  
HUNGERFORD

**Marshall**

Estate Agents



## 9 Foundry House

Kennet Way, Hungerford, Berkshire, RG17 0YZ

£199,950

Approximately 7.5 Miles to Newbury

Approximately 3 Miles to M4 J14

Approximately 9.5 Miles to Marlborough

- First Floor Apartment
- Leasehold Approximately 150 Years Remaining
- Communal Entrance Hall
- Private Entrance Hall
- Living/Dining Room
- Well Appointed Kitchen
- Two Bedrooms (Currently Merged To Form One Large Bedroom Suite)
- Superb Re-Fitted Bathroom Complete With Spa Bath With Shower Above
- Electric Thermostat Controlled Heating
- Double Glazing
- Well Tended Communal Grounds
- Intercom Entry System
- Private Residents Car Park With Two Spaces
- Maintenance Charge £120 PCM



### Situation

The pretty market Town of Hungerford is steeped in History and sits on the banks of the chalk stream River Kennet and the Kennet and Avon canal. The Town is well served by a variety of shops including butchers, bakers, independent retailers and of course antique shops. Other amenities include two supermarkets, a post office, two building societies and a doctors surgery. There is also a swimming pool, leisure sports centre, gym and tennis club.





### **The Property**

A superbly presented first floor apartment located in an exclusive residential area just a short walk from the town centre.

The accommodation includes a comfortable Living/Dining room and a beautifully re-fitted Kitchen with painted finish cabinets and a built in oven, hob and Fridge Freezer. The property was originally built with two bedrooms which have now been merged to form a bright and airy main bedroom suite complete with fitted wardrobes. The second bedroom could be easily re-instated if preferred. Finally, there is a fabulous modern Bathroom featuring a Spa Bath with Shower above.

The property benefits from a recently extended lease and a share of the freehold.

### **Outside**

There are well tended communal grounds and a private residents car park.







Score	Energy rating	Current	Potential
92+	A		
81-91	B		
69-80	C	76 C	79 C
55-68	D		
39-54	E		
21-38	F		
1-20	G		

### Services

Mains Electricity

Mains Water/Drainage

What 3 words Location: ///cuts.bonfires.hopping

Council Tax Band: C



**01488 686867**

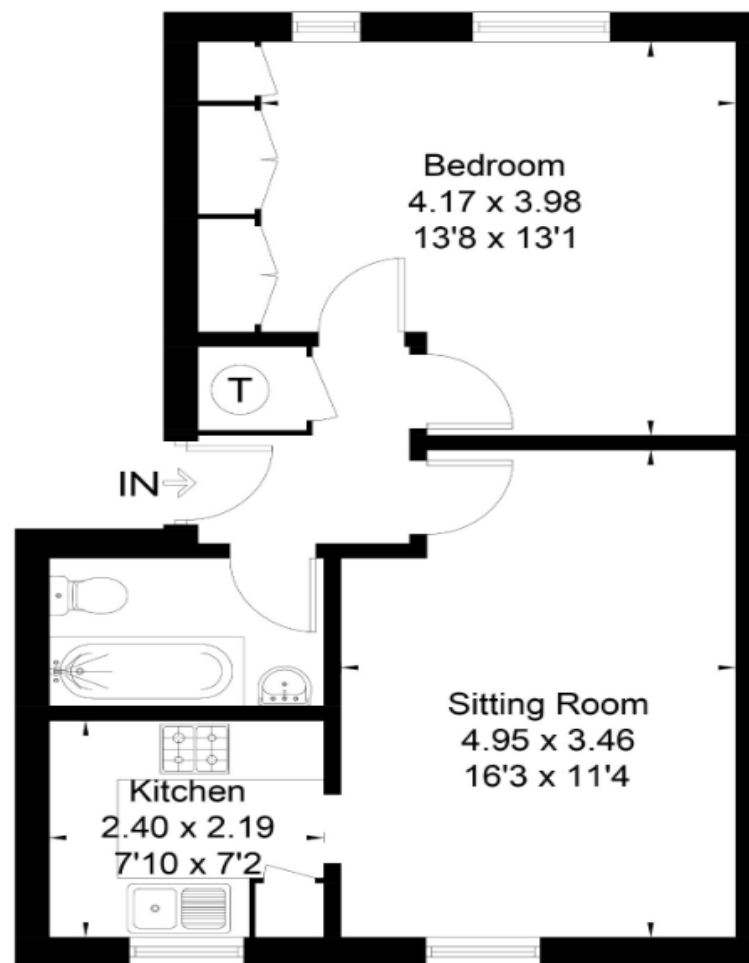
[www.marshallestateagents.co.uk](http://www.marshallestateagents.co.uk)

[sales@marshallestateagents.co.uk](mailto:sales@marshallestateagents.co.uk)

19 High Street

Hungerford, Berkshire, RG17 0NL

Approximate Area = 47.9 sq m / 515 sq ft



### First Floor

Surveyed and drawn in accordance with the International Property Measurement Standards (IPMS 2: Residential)  
fourwalls-group.com 307301

These particulars are not an offer or contract or part thereof. Their accuracy is not guaranteed. No statement made in them shall be relied on as a statement or representation of fact and we and the vendors have no responsibility for them. We and our employees have no authority to and do not make or give any representations or warranty concerning this property any appliances mentioned or general services and any intending purchase must rely upon an inspection of the property.

Russell Marshall Estate Agents is a trading name of RM Property Developments. Registered in England and Wales. No. 4872266. Registered Office Griffins Court, 24-32 London Road, Newbury, Berks RG14 1JX