



3 GLADSTONE CLOSE  
KINTBURY

**Russell Marshall**  
Estate Agents



### 3 Gladstone Close

Kintbury, Hungerford, Berkshire, RG17 9XU

Guide Price £360,000

Approximately 3.4 Miles to Hungerford

Approximately 6.6 Miles to Newbury

Approximately 5.4 Miles to M4 J14

- Freehold
- Link Semi-Detached House
- Entrance Hall
- Sitting Room
- Kitchen/Dining Room
- Utility Room
- Cloakroom/W.C.
- Three Bedrooms
- Bathroom
- Double Glazing
- Electric Heating
- Pretty Garden
- Garage
- Driveway
- Village Location
- No Onward Chain



#### Situation

The thriving village of Kintbury is well served by a range of facilities including doctors' surgery, primary school, pubs/restaurants and sports clubs. There is also a well stocked corner shop with post office, butcher, baker and hairdressers. The pretty market towns of Hungerford and Newbury are easily accessible. Hungerford which is famous for its antique shops also boasts two supermarkets, banks, swimming pool and other useful amenities.





## **The Property**

A well presented link semi-detached house situated in a popular residential area.

This lovely home includes a comfortable Sitting room which leads through to a bright and airy open plan Kitchen/Dining room. The Kitchen itself features painted finish cabinets and is served by a useful Utility room. French doors from the Dining area open onto the rear garden. A Cloakroom/W.C. completes the ground floor.

Upstairs, there are three well proportioned Bedrooms and a modern Bathroom.

Double glazing and electric heating are the finishing touch to this home which is offered for sale with no onward chain.

## **Outside**

At the front of the house there is a neatly lawned garden and a flower border. A driveway leads to the single garage with up and over door.

At the rear of the house there is a pretty garden which includes a wide paved patio leading to a neatly tended lawn with flower and shrub borders.











Score	Energy rating	Current	Potential
92+	A		
81-91	B		
69-80	C		
55-68	D		66 D
39-54	E	42 E	
21-38	F		
1-20	G		

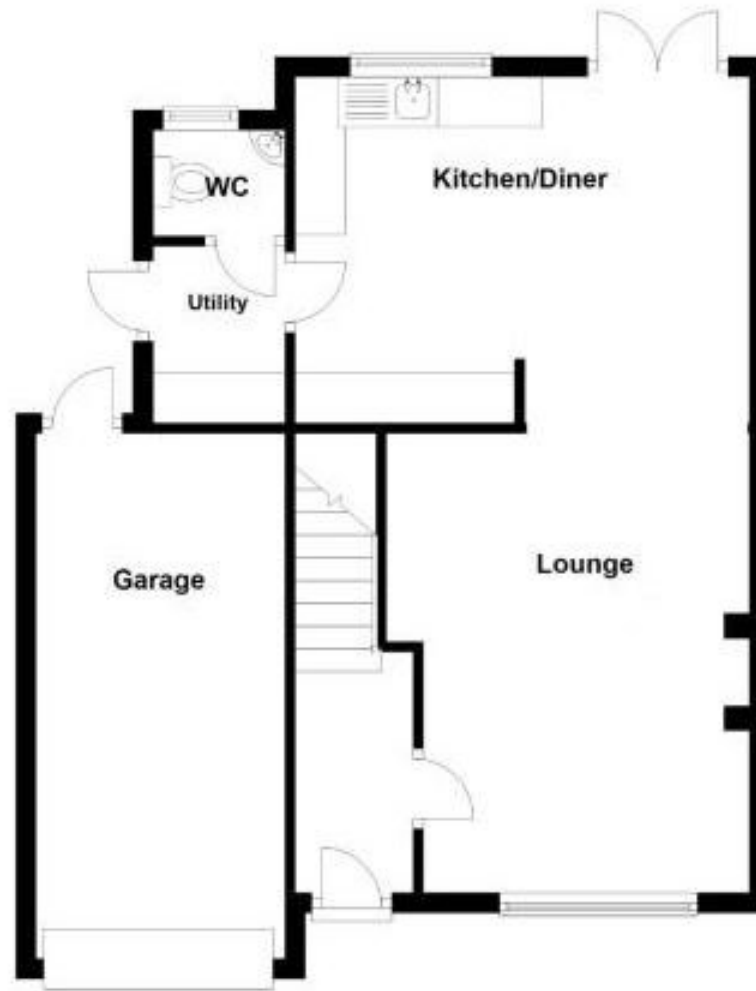
Services

Mains Water & Drainage  
Mains Electricity

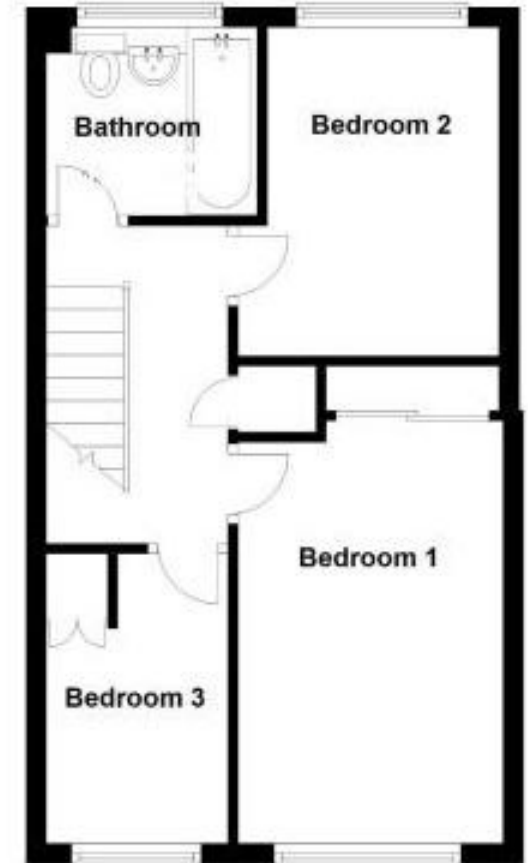
Council Tax Band: D

What 3 Words Location: ///hormones.speaking.dragonfly

**Ground Floor**



**First Floor**



Measurements are approximate. Not to Scale. Illustrative purposes only.  
Plan produced using PlanUp.



**01488 686867**  
www.russell-marshall.co.uk  
19 High Street  
Hungerford, Berkshire, RG17 0NL

These particulars are not an offer or contract or part thereof. Their accuracy is not guaranteed. No statement made in them shall be relied on as a statement or representation of fact and we and the vendors have no responsibility for them. We and our employees have no authority to and do not make or give any representations or warranty concerning this property any appliances mentioned or general services and any intending purchase must rely upon an inspection of the property.

Russell Marshall Estate Agents is a trading name of RM Property Developments. Registered in England and Wales. No. 4872266. Registered Office Griffins Court, 24-32 London Road, Newbury, Berks RG14 1JX