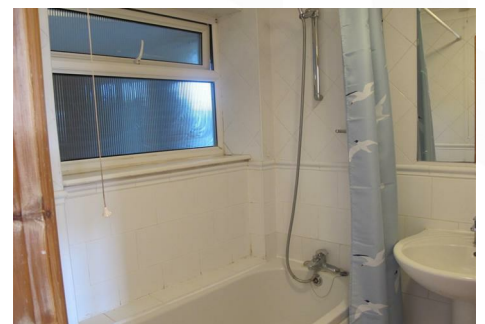




Lynwood Close, South Woodford, E18 1DP

Offers In Excess Of £240,000 Leasehold

Ground floor one bedroom purpose built flat. Open-plan kitchen/lounge, bath/shower room and fitted kitchen with appliances. NO ONWARD CHAIN. Telephone 020 8530 4646 to arrange a viewing.



Open-Plan Lounge/Kitchen

16'8" x 11'6" (5.100 x 3.513)

Bedroom

12'0" x 5'5" (3.661 x 1.665)

Bathroom

7'8" x 5'5" (2.360 x 1.660)

Disclaimer

Whilst every care has been taken to ensure the accuracy of these particulars, such accuracy cannot be guaranteed, and therefore does not constitute any part of an offer or contract. The agent has not tested any apparatus, equipment, fixtures, fittings or services and so does not verify they are in working order, fit for purpose, or within ownership of the sellers, therefore the buyer cannot assume any information is correct. Photographs of the interior of the property are given purely to give an indication of décor, style etc., and does not imply that any furniture/fittings etc., are included.

