

ENGLANDS



Flat 11 Cheyne Court 99 Greenfield Road

Harborne, Birmingham, B17 0EH

£245,000





PROPERTY DESCRIPTION

A well-presented and much improved attractive ground floor apartment in an excellent period conversion development. Delightful and sought-after location close to amenities. Central heating and double glazing as specified, private entrance hall, good sized living room, fitted kitchen, two bedrooms, bathroom/WC, parking and communal grounds/courtyard area to the rear. NO CHAIN

Cheyne Court is very well-situated on Greenfield Road close to Harborne High Street. It is readily accessible to the Queen Elizabeth Hospital, the University of Birmingham and Harborne leisure centre, as well as the excellent amenities around the High Street and regular transport services leading through to comprehensive city centre leisure, entertainment and shopping facilities.

This popular development is set in landscaped grounds with lawns, trees, shrubs and an archway through to the rear grounds/parking area.

The property itself is approached by a lawned fore garden and pathway at the front of the development, leading to a private entrance. An internal inspection is absolutely essential and thoroughly recommended to fully appreciate the accommodation, which has benefited from a number of improvements including recent double glazing. Comprising in more detail.



Tel: 01214271974

Flat 11 Cheyne Court 99 Greenfield Road



Panelled entrance door with fan light over leads into:

VESTIBULE

Having tiled floor, radiator, ceiling light point and door through to:

LIVING/DINING ROOM

5.35 max into bay x 5.13 max (17'6" max into bay x 16'9" max)

Having double glazed sash bay window with panelling detail below, overlooking the front elevation, ornate coving to ceiling, ceiling light point set in ceiling rose, ornate wooden fireplace surround with marble-style insert and hearth. Radiator, three wall lights, store cupboard housing the wall-mounted Worcester gas Combi boiler and further overhead storage cupboard.

KITCHEN

2.712 max x 1.78 max (8'10" max x 5'10" max)

Having a range of matching wall and base units, integrated Indesit electric oven with electric hob over, wall-mounted extractor fan, appliance space for washing machine, one and a half bowl stainless steel sink drainer with mixer tap over and part complementary tiling to walls. Wood-effect flooring and ceiling light point.

INNER LOBBY

Having ceiling light point.

BEDROOM ONE

2.8 max x 4.29 max (9'2" max x 14'0" max)

Having double glazed window to the rear elevation, radiator, ceiling light point and ornate coving to ceiling.

BEDROOM TWO

2.98 max x 2.36 max (9'9" max x 7'8" max)

Having double glazed window overlooking the courtyard, radiator and ceiling light point.

BATHROOM

1.97 max x 1.4 max (6'5" max x 4'7" max)

Having panelled bath with wall-mounted electric shower over, side screen, pedestal wash hand basin, low flush WC, radiator, ceiling light point, extractor fan and further shavers socket with integral light. Part complementary tiling to walls and vinyl flooring.

OUTSIDE

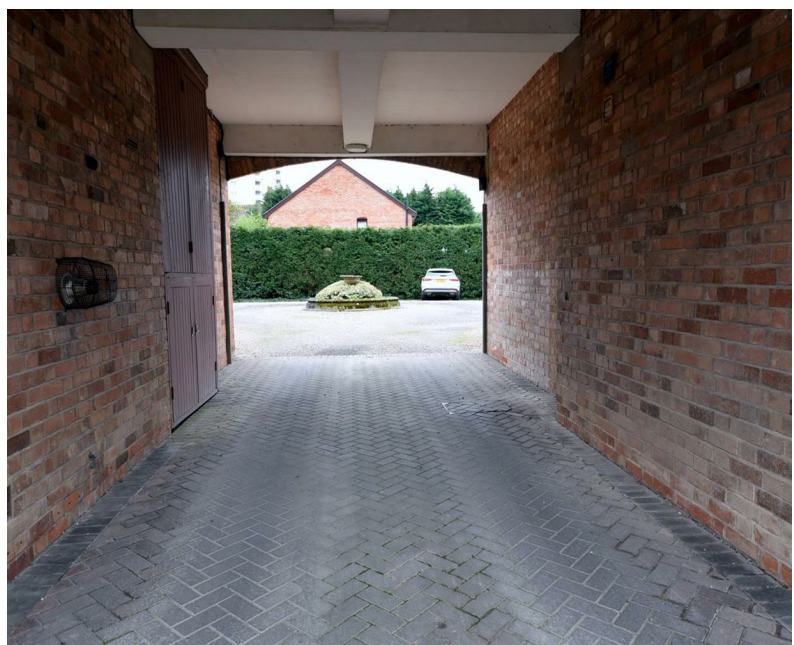
Parking is accessed via an archway to a courtyard.

COUNCIL TAX BAND : D

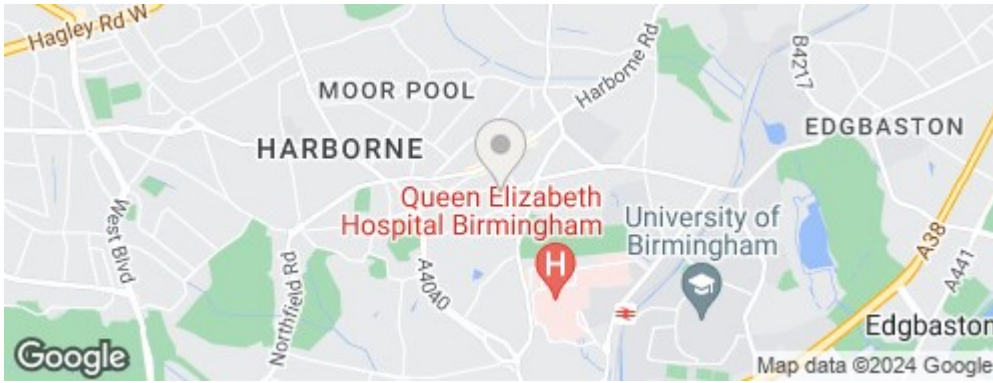
TENURE: Leasehold. We are advised there are 90 years' remaining. There is a service charge payable, currently £2,422 p.a. and a ground rent of £75 p.a.



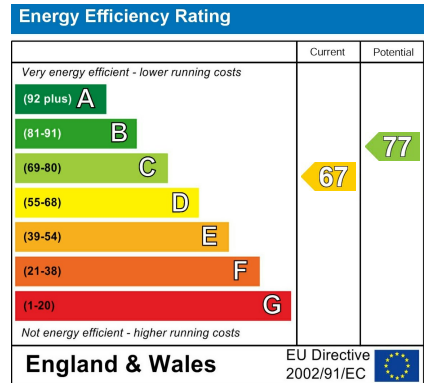
ENGLANDS



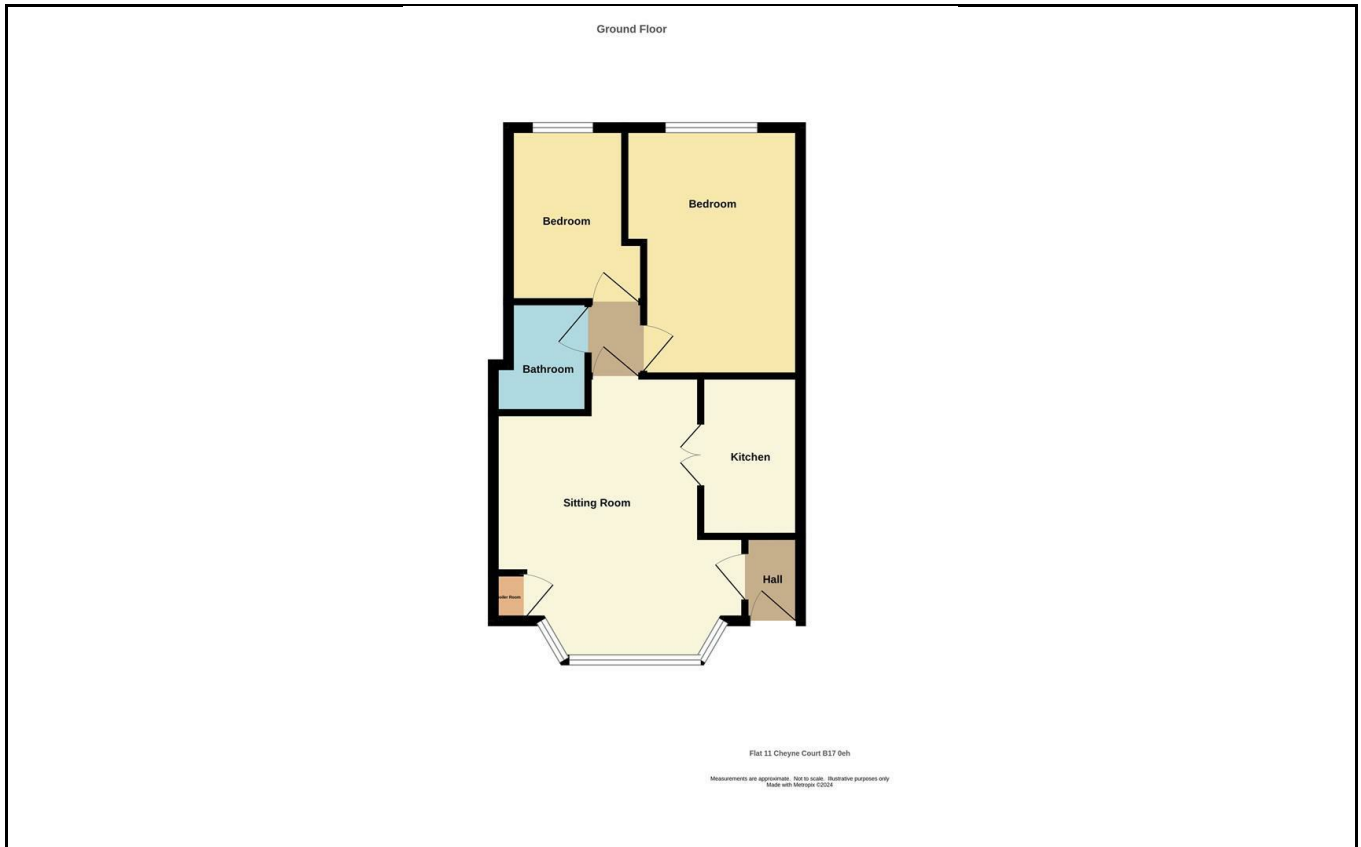
ROAD MAP



ENERGY EFFICIENCY GRAPH



FLOOR PLAN



DISCLAIMER NOTICES

Consumer Protection from Unfair Trading Regulations 2008 & The Property Ombudsman Code for Residential Estate Agents

“The agent has not tested any apparatus, equipment, fixture, fittings or services, and so does not verify they are in working order, fit for their purpose, or within ownership of the sellers, therefore the buyer must assume the information given is incorrect. Neither has the agent checked the legal documentation to verify legal status of the property or the validity of any guarantee. A buyer must assume the information is incorrect, until it has been verified by their own solicitors. The measurements supplied are for general guidance, and as such, must be considered as incorrect. A buyer is advised to re-check the measurements themselves before committing themselves to any expense. Nothing concerning the type of construction or the condition of the structure is to be implied from the photograph of the property. The sales particulars may change in the course of time, and any interested party is advised to make final inspection of the property prior to exchange of contracts”.

Misrepresentation Act 1967

“These details are prepared as a general guide only and should not be relied upon as a basis to enter into a legal contract, or to commit expenditure. An interested party should consult their own surveyor, solicitor or other professional before committing themselves to any expenditure or other legal commitments. If any interested party wishes to rely upon any information from the agent, then a request should be made and specific written confirmation can be provided. The agent will not be responsible for any verbal statement made by any member of staff, as only a specific written confirmation should be relied upon. The agent will not be responsible for any loss other than

These particulars, whilst believed to be accurate are set out as a general outline only for guidance and do not constitute any part of an offer or contract. Intending purchasers should not rely on them as statements of representation of fact, but must satisfy themselves by inspection or otherwise as to their accuracy. No person in this firms employment has the authority to make or give any representation or warranty in respect of the property.