

AVAILABLE WITH
ZERO DEPOSIT

homes4u™
for all your property needs

Energy Efficiency Rating		Current	Potential
Very energy efficient - lower running costs			
(92 plus) A		85	86
(81-91) B			
(69-80) C			
(55-68) D			
(39-54) E			
(21-38) F			
(1-20) G			
Not energy efficient - higher running costs			

England & Wales EU Directive 2002/91/EC

One Bed Apartment

£900 PCM

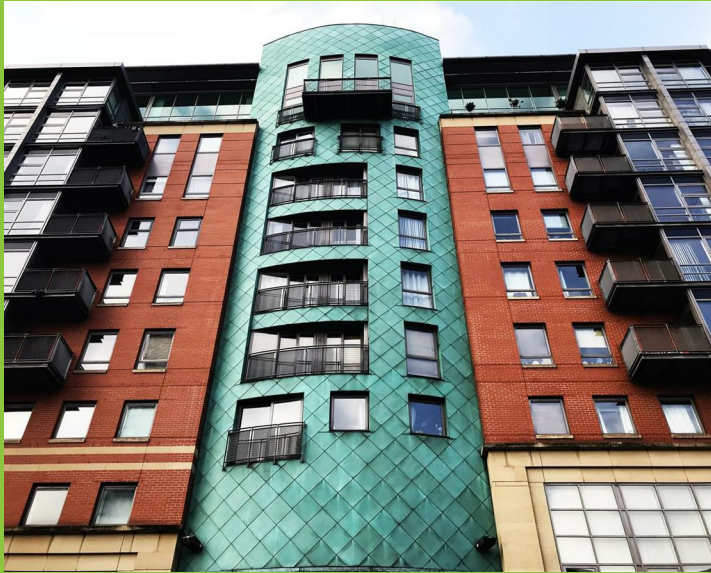
W3 Building, Whitworth Street West, City Centre

Available 02.09.2021

View more properties at [homes4u.co.uk](https://www.homes4u.co.uk)

W3 Building, Whitworth Street West, City Centre, Manchester, M1 5EA
£900 PCM

homes4u™
for all your property needs



ZERO DEPOSIT AVAILABLE. A fully furnished, second floor apartment with courtyard views. The property benefits from secure underground parking, open plan living area and double bedroom.

The apartment comprises of an open-plan living room and kitchen with integrated appliances. There is a spacious bedroom with a double bed and free-standing furniture and fully tiled bathroom. The development benefits from a 24 hour concierge, secure fob entry, lift access to every floor and a resident's courtyard.

The W3 Building is located on Oxford Road and Whitworth Street. Both universities are within half a mile walking distance. Oxford Road train station is directly over the road and Piccadilly is only a short walk away. Oxford Road has great bus links in and out of Manchester. The building is surrounded with an array of amenities including local supermarket Sainsbury's, bars including Gorilla and Black Dog Ballroom and the City Centre is on your doorstep.



View all our properties at
[homes4u.co.uk](https://www.homes4u.co.uk)

Whilst we endeavour to ensure the accuracy of property details, we have not tested any apparatus, equipment, fixtures, fittings or services and so cannot verify that they are in working order or fit for purpose. Neither have we had sight of legal documents to verify Planning Permission or the Freehold or Leasehold status of any property. Buyers are advised to obtain verification from their solicitor and/or surveyor. Items shown in photographs are not included; they may be available by separate negotiation. Although we try to ensure the accuracy of measurements, we recommend if potential purchasers require accurate measurements to order flooring, or to ensure existing furniture will fit, they should take their own measurements.



W3 Building, Whitworth Street West, City Centre, Manchester, M1 5EA
£900 PCM

homes4u™
for all your property needs



homes4u™

City Centre and North Manchester

Sales Team 0161 236 8606
Rentals Team 0161 236 0202
city@homes4u.co.uk

South Manchester and Cheshire

Sales Team 0161 448 4805
Rentals Team 0161 448 0090
southmanchester@homes4u.co.uk

[@homes4u](#) [homes4umanchester](#) [homes4u.manchester](#) [homes4u](#) [homes4u](#)

View more properties at homes4u.co.uk