



1A Old Salmon Court 87 Marygate

Berwick-Upon-Tweed, TD15 1BA

£650 Per Month

We welcome to the lettings market this newly refurbished 1-bedroom apartment located in the heart of Berwick town centre. This property offers modern living with the convenience of nearby amenities, shops and transport links.

The apartment features living area, contemporary kitchen & bathroom and a comfortable bedroom area. The property benefits from electric heating throughout.

Residents can also enjoy access to a well maintained communal garden area, perfect for relaxing outdoors.

Ideal for single professionals or a couple.

Do note that there is stair access to the properties from the communal courtyard.

Available from early week commencing 2nd March 2026.

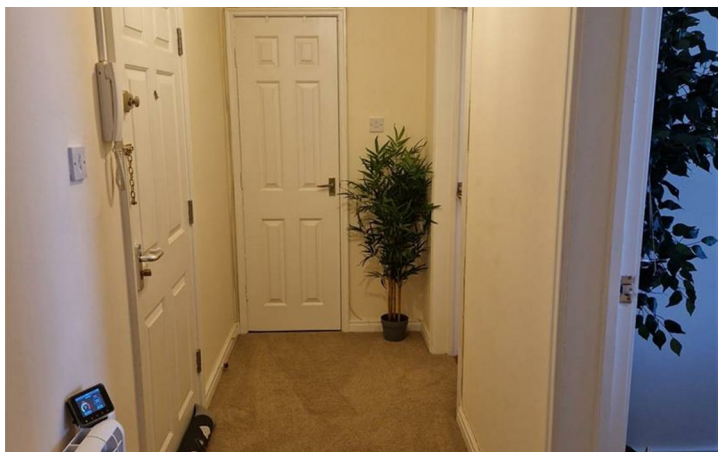
No pets.

EPCC

Council Tax Band A

Rent £650 pcm

Deposit £750





Important Information You may download, store and use the material for your own personal use and research. You may not republish, retransmit, redistribute or otherwise make the material available to any party or make the same available on any website, online service or bulletin board of your own or of any other party or make the same available in hard copy or in any other media without the website owner's express prior written consent. The website owner's copyright must remain on all reproductions of material taken from this website.

Berwick Office
36 Hide Hill, Berwick-upon-Tweed
Northumberland, TD15 1AB

T: (01289) 307571
F: (01289) 302948
E: berwick@aitchisons.co

Wooler Office
25 High Street, Wooler
Northumberland, NE71 6BU

T: (01668) 281819
F: (01668) 281717
E: wooler@aitchisons.co



Zoopla.co.uk

