



## Flat 2 38-42 Hide Hill

Berwick-Upon-Tweed, Northumberland, TD15 1EY

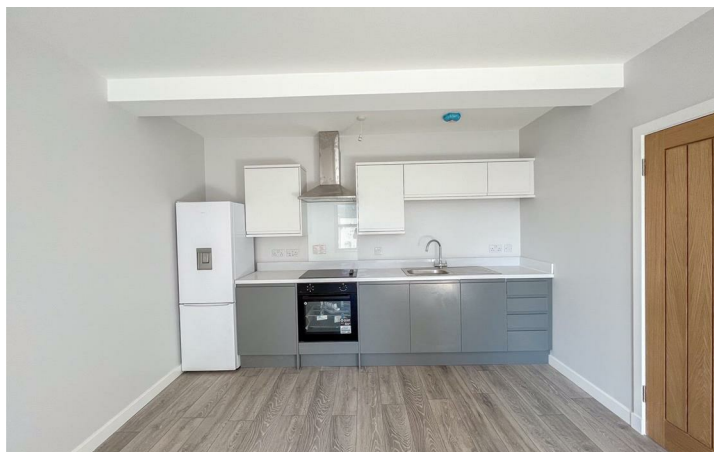
**Fixed Asking Price £125,000**

Welcome to this charming apartment located in the heart of the new town centre development on Hide Hill, Berwick-Upon-Tweed. This modern property boasts one reception room, one bedroom, and one bathroom, making it a perfect cozy retreat for those looking to immerse themselves in the vibrant atmosphere of the town.

The apartment's layout is thoughtfully designed to maximise space and functionality, offering a comfortable living area for relaxation and entertainment. The bedroom provides a peaceful sanctuary for rest, ensuring a good night's sleep after a busy day exploring the town.

Situated in a prime location, residents will have easy access to a variety of amenities, including shops, restaurants, and cultural attractions. The convenience of living in the town centre allows for a truly immersive experience in the local community.

Whether you are a first-time buyer, a young professional, or someone looking to downsize, this apartment offers a fantastic opportunity to own a property in a sought-after area. Don't miss out on the chance to make this modern apartment your new home in Berwick-Upon-Tweed.



## **Entrance Hall**

Spacious entrance hall.

## **Lounge/Kitchen Area**

Open plan lounge and kitchen area, the kitchen includes a fridge freezer, cooker and induction hob. Electric heater.

## **Bedroom 1**

Double bedroom with electric heater.

## **Bathroom**

Bathroom suite, W.C, shower, and sink. Towel radiator.

## **General Information**

All fitted floor coverings included sale.

Newly installed double glazing windows.

Energy Rating C (72)

Leasehold. 299 years remaining.

Council Tax Band (TBC)

## **Agency Information**

OFFICE OPENING HOURS

Monday - Friday 9:00 - 17:00

Saturday - 9:00 - 13:00

## **FIXTURES & FITTINGS**

Items described in these particulars are included in sale, all other items are specifically excluded. All heating systems and their appliances are untested.

## **VIEWING**

Strictly by appointment with the selling agent and viewing guidelines due to Coronavirus (Covid-19) to be adhered to.



Important Information You may download, store and use the material for your own personal use and research. You may not republish, retransmit, redistribute or otherwise make the material available to any party or make the same available on any website, online service or bulletin board of your own or of any other party or make the same available in hard copy or in any other media without the website owner's express prior written consent. The website owner's copyright must remain on all reproductions of material taken from this website.

**Berwick Office**  
36 Hide Hill, Berwick-upon-Tweed  
Northumberland, TD15 1AB

T: (01289) 307571  
F: (01289) 302948  
E: [berwick@aitchisons.co](mailto:berwick@aitchisons.co)

**Wooler Office**  
25 High Street, Wooler  
Northumberland, NE71 6BU

T: (01668) 281819  
F: (01668) 281717  
E: [wooler@aitchisons.co](mailto:wooler@aitchisons.co)



**Zoopla.co.uk**

