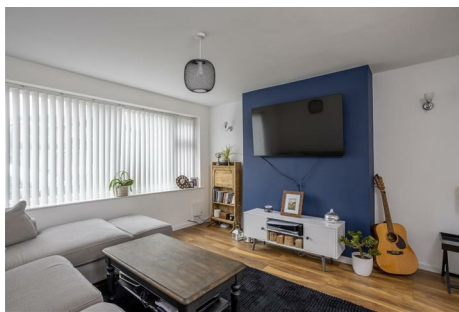
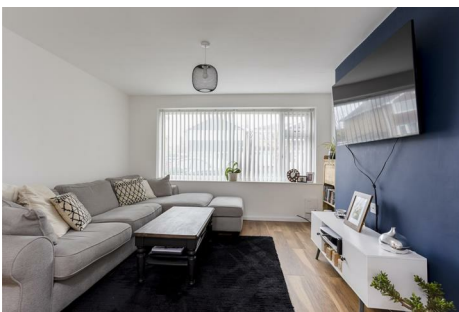


# N A I S H

ESTATE AGENTS



YORK  
EST. 1939



## 109 Tedder Road

, York, YO24 3JE

Located in a popular residential area, positioned to the west of York, is this spacious three-bedroom semi-detached home set on a generous plot. This property could make a wonderful family home as it has the potential for further extensions (subject to relevant planning permissions) and would make for an ideal home for those looking to get on the property ladder. Tedder Road is conveniently placed for easy access to a range of local amenities, schools and commuter links such as A64/A59/A1237.

**£315,000**

# 109 Tedder Road

, York, YO24 3JE



- Semi-Detached Home
- Recently Landscaped Garden
- Three Generous Bedrooms
- Garage & Driveway
- Potential to extend (STPP)
- No Onward Chain

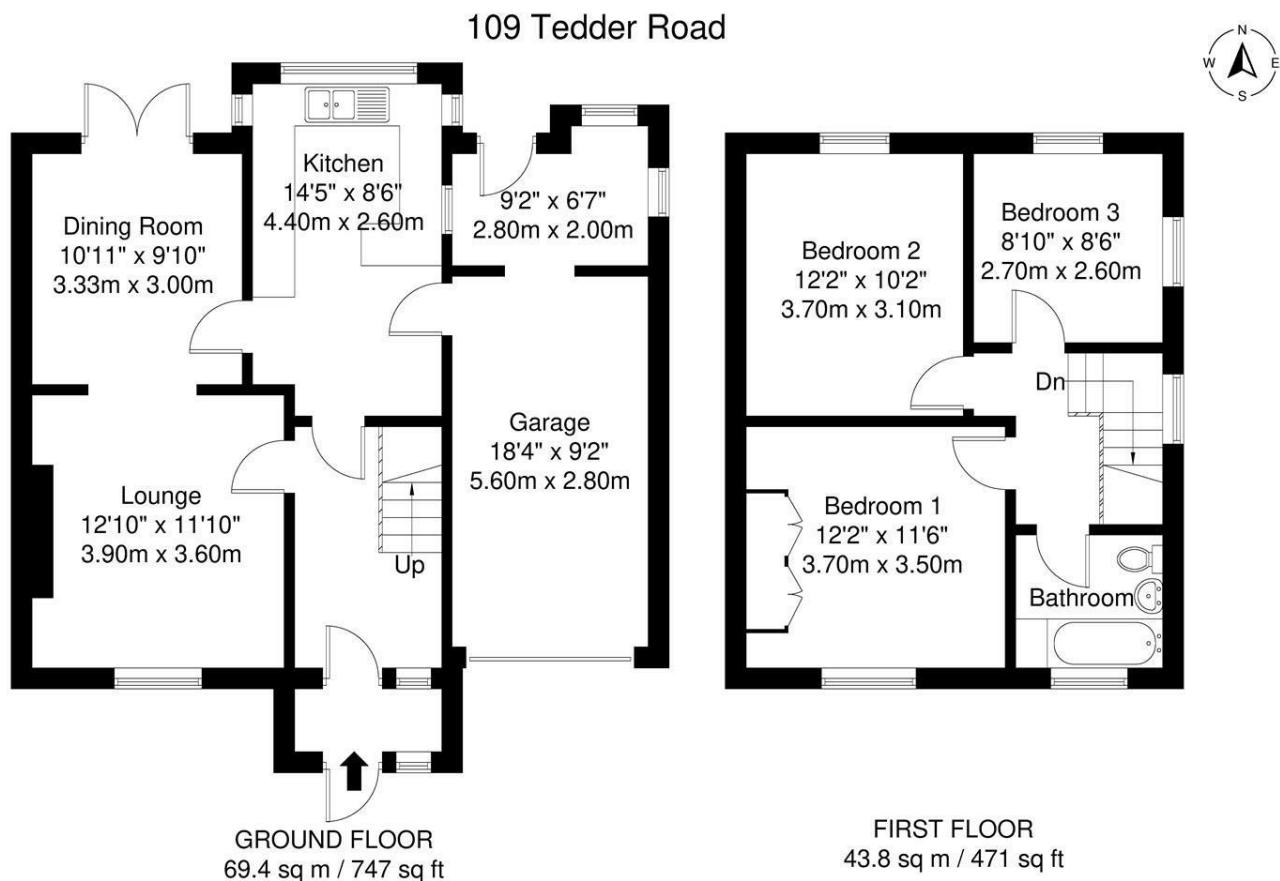


**Directions**





Floor Plan



These particulars, whilst believed to be accurate are set out as a general outline only for guidance and do not constitute any part of an offer or contract. Intending purchasers should not rely on them as statements of representation of fact, but must satisfy themselves by inspection or otherwise as to their accuracy. No person in this firms employment has the authority to make or give any representation or warranty in respect of the property.

Energy Efficiency Rating		
	Current	Potential
Very energy efficient - lower running costs		
(92 plus) A		
(81-91) B	85	87
(69-80) C		
(55-68) D		
(39-54) E		
(21-38) F		
(1-20) G		
Not energy efficient - higher running costs		
England & Wales		
EU Directive 2002/91/EC		