

N A I S H
E S T A T E A G E N T S



Y O R K
E S T . 1 9 3 9



73 Thorpe Street , York, YO23 1NJ

A beautiful four-bedroom period fore-courted mid-terrace home, perfectly positioned on Thorpe Street just off the highly sought-after Bishopthorpe Road. Renowned for its vibrant community, excellent amenities, and easy access to York city centre, Rowntree Park, and picturesque riverside walks, this location suits all lifestyles.

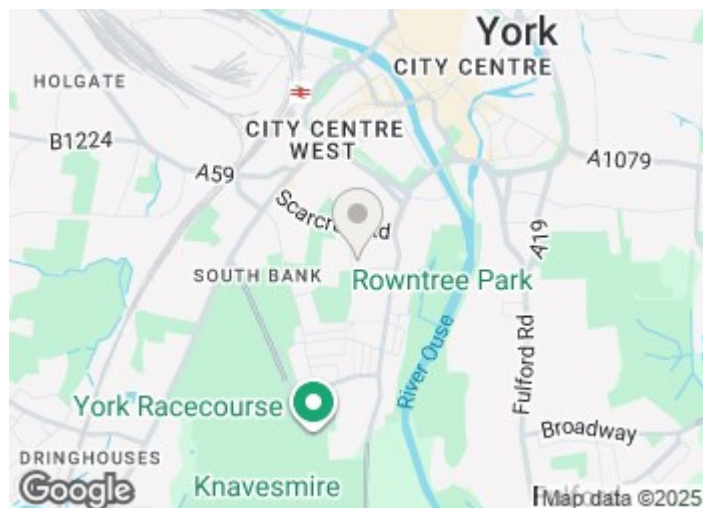
£550,000

73 Thorpe Street

, York, YO23 1NJ



- Four Bedroom Period Property
- Popular Location
- Beautifully Presented Throughout
- Ground Floor W/C & Utility
- Log Burner & Original Features
- West-Facing Courtyard

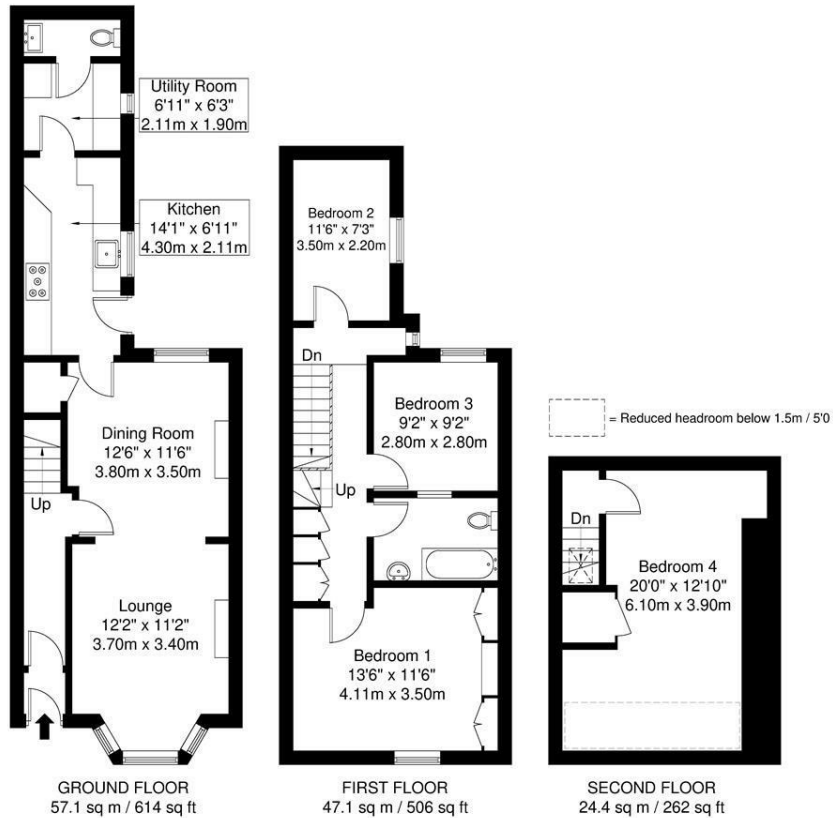


[Directions](#)



Floor Plan

Thorpe Street



APPROXIMATE GROSS INTERNAL AREA = 128.6 sq m / 1382 sq ft

Whilst every attempt has been made to ensure the accuracy of the floorplan contained here, measurements of doors, windows, rooms and any other items are approximate and no responsibility is taken for any error, omission or mis-statement. This plan is for illustrative purposes only and should be used as such by any prospective purchaser. The services, systems and appliances shown have not been tested and no guarantee as to their operability or efficiency can be given.

These particulars, whilst believed to be accurate are set out as a general outline only for guidance and do not constitute any part of an offer or contract. Intending purchasers should not rely on them as statements of representation of fact, but must satisfy themselves by inspection or otherwise as to their accuracy. No person in this firm's employment has the authority to make or give any representation or warranty in respect of the property.

3 High Petergate, York, YO1 7EN
Tel: 01904 653564 Email: naish@naishproperty.co.uk www.naishproperty.co.uk

Energy Efficiency Rating		Current	Potential
Very energy efficient - lower running costs			
(92 plus) A			
(81-91) B			86
(69-80) C		70	
(55-68) D			
(39-54) E			
(21-38) F			
(1-20) G			
Not energy efficient - higher running costs			
England & Wales		EU Directive 2002/91/EC	