



17 Chantry Close
, York, YO24 2SJ

Superb two bedroom bungalow set in a popular residential area in Woodthorpe, York

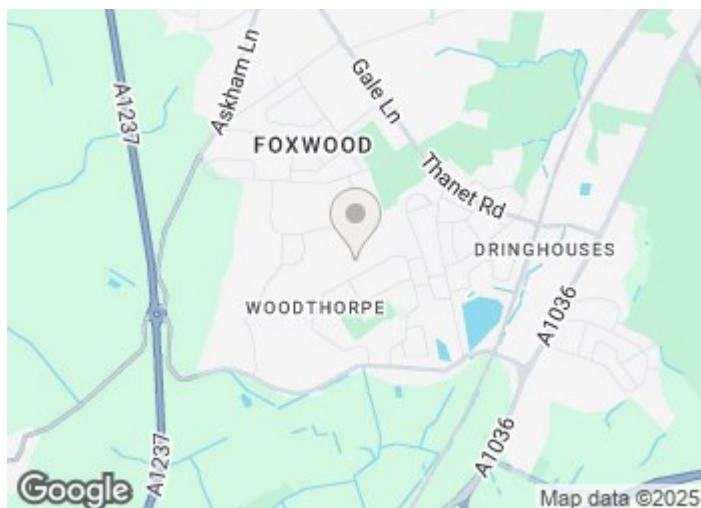
Asking Price £240,000

17 Chantry Close

, York, YO24 2SJ



- TWO DOUBLE BEDROOMS
- EXTENDED SEMI-DETACHED BUNGALOW
- QUIET LOCATION
- MULTIPLE RECEPTION ROOMS
- FRONT AND REAR GARDEN
- DETACHED GARAGE
- INVESTMENT YIELD UPTO 6% ROI

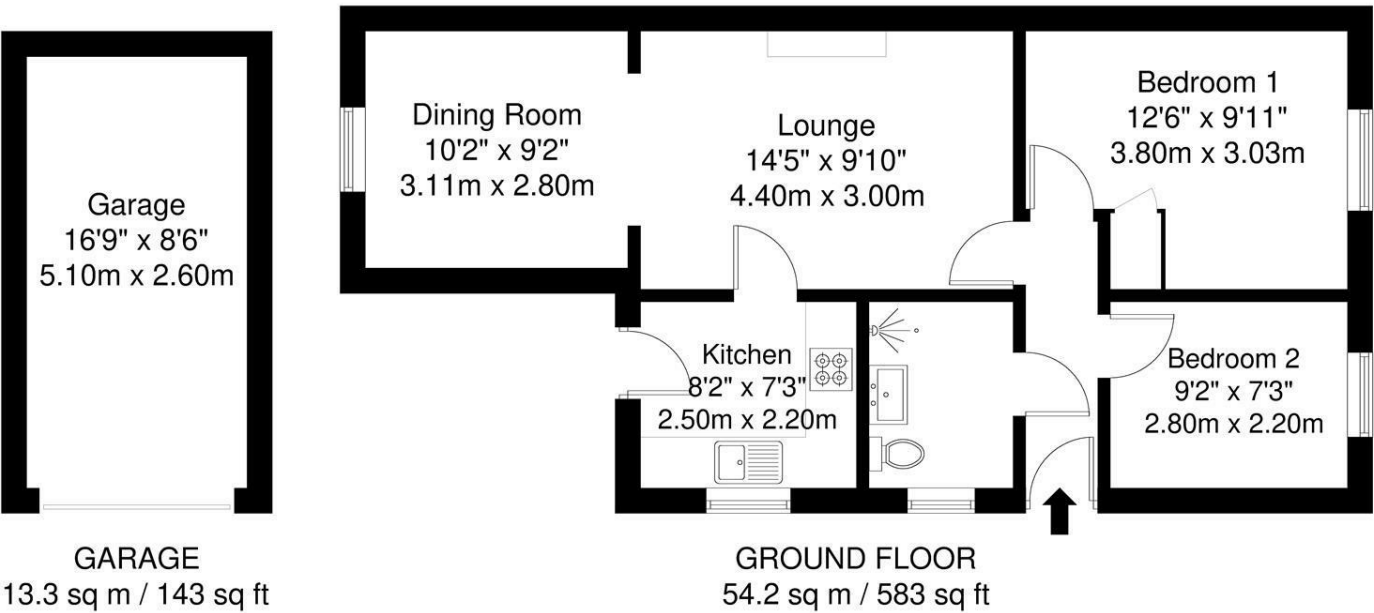


Directions



Floor Plan

17 Chantry Close



APPROXIMATE GROSS INTERNAL AREA = 54.2 sq m / 583 sq ft
GARAGE = 13.3 sq m / 143 sq ft
TOTAL = 67.5 sq m / 726 sq ft

Whilst every attempt has been made to ensure the accuracy of the floorplan contained here, measurements of doors, windows, rooms and any other items are approximate and no responsibility is taken for any error, omission or mis-statement. This plan is for illustrative purposes only and should be used as such by any prospective purchaser. The services, systems and appliances shown have not been tested and no guarantee as to their operability or efficiency can be given.

These particulars, whilst believed to be accurate are set out as a general outline only for guidance and do not constitute any part of an offer or contract. Intending purchasers should not rely on them as statements of representation of fact, but must satisfy themselves by inspection or otherwise as to their accuracy. No person in this firms employment has the authority to make or give any representation or warranty in respect of the property.

Energy Efficiency Rating		
	Current	Potential
Very energy efficient - lower running costs		
(92 plus) A		
(81-91) B		
(69-80) C		
(55-68) D		
(39-54) E		
(21-38) F		
(1-20) G		
Not energy efficient - higher running costs		
England & Wales	68	
EU Directive 2002/91/EC		