



8 Horseman Close , Copmanthorpe, YO23 3SR

This wonderful three-bedroom end-terraced family home is situated in the heart of Copmanthorpe, York.

£295,000

8 Horseman Close

, Copmanthorpe, YO23 3SR



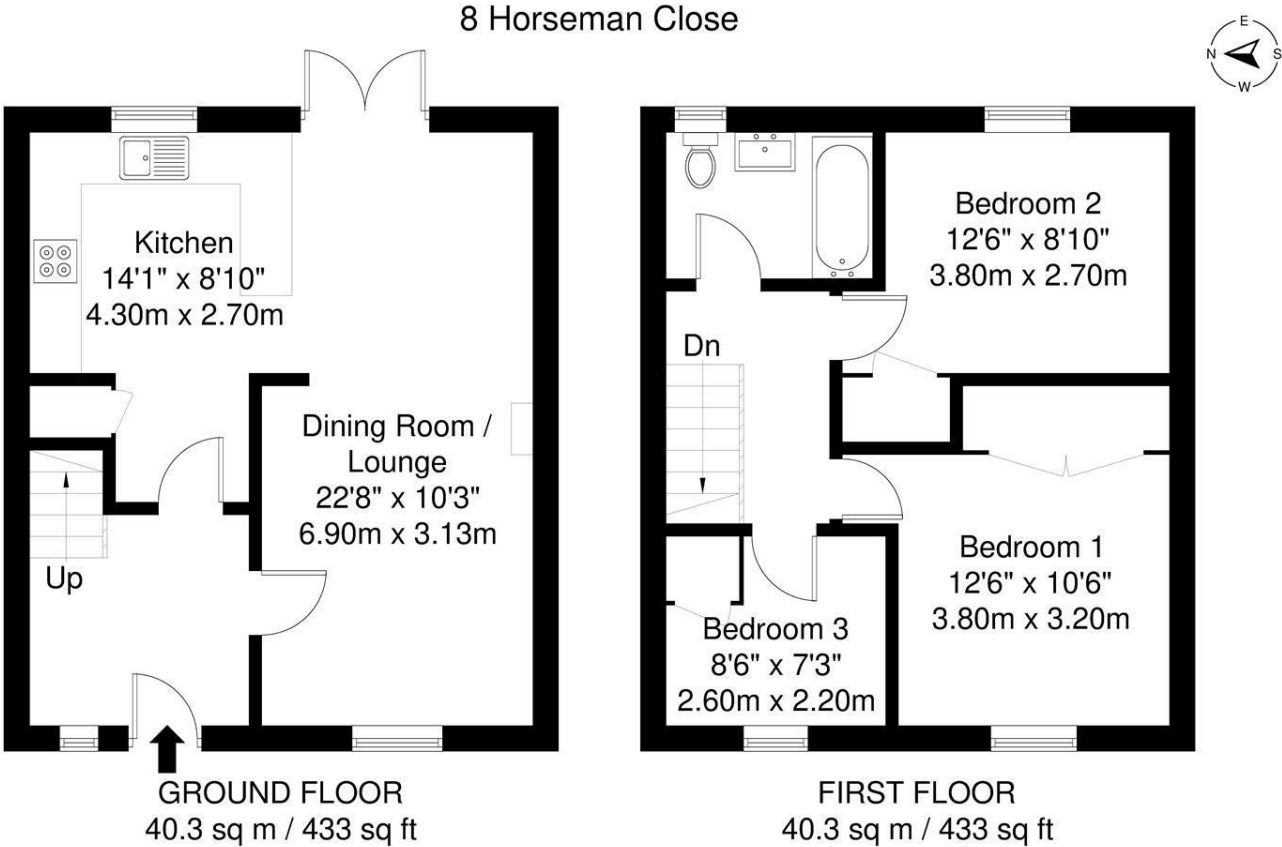
- Three Bedroom Home
- End Terraced
- Beautifully Presented Throughout
- Off Street Parking
- Popular Village Location
- Easy Access for Outer Ring Road



Directions



Floor Plan



Whilst every attempt has been made to ensure the accuracy of the floorplan contained here, measurements of doors, windows, rooms and any other items are approximate and no responsibility is taken for any error, omission or mis-statement. This plan is for illustrative purposes only and should be used as such by any prospective purchaser. The services, systems and appliances shown have not been tested and no guarantee as to their operability or efficiency can be given.

These particulars, whilst believed to be accurate are set out as a general outline only for guidance and do not constitute any part of an offer or contract. Intending purchasers should not rely on them as statements of representation of fact, but must satisfy themselves by inspection or otherwise as to their accuracy. No person in this firms employment has the authority to make or give any representation or warranty in respect of the property.

