

N A I S H
ESTATE AGENTS



YORK
EST. 1939



21 Windsor Street , York, YO23 1DN

A charming and very well-presented two bedroom mid terrace house, situated right in the heart of one of York's most sought after locations of South Bank, within easy walking distance of the ever popular "Bishy" Road local shops, local schools, Rowntree Park, the Knavesmire and river sidewalks into town.

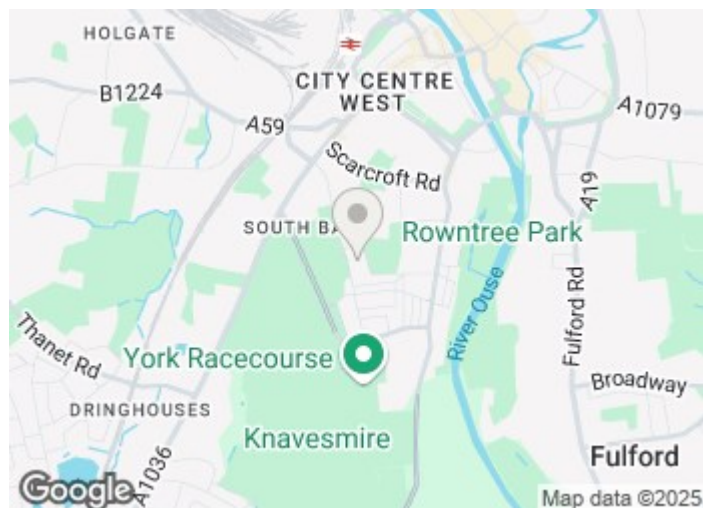
£250,000

21 Windsor Street

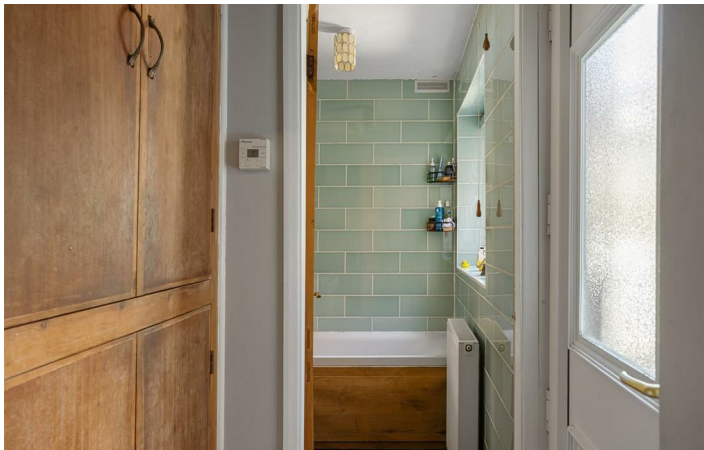
, York, YO23 1DN



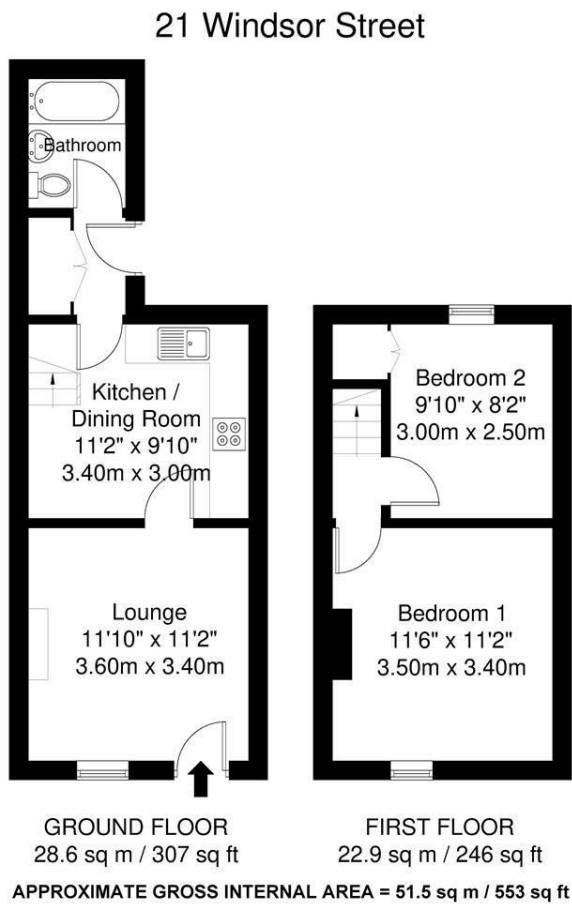
- Mid-Terrace Home
- Sunny Rear Courtyard
- Two Bedrooms
- Anticipated rental of £1200pcm
- Wood-burning Stove
- Popular Location



Directions



Floor Plan



Whilst every attempt has been made to ensure the accuracy of the floorplan contained here, measurements of doors, windows, rooms and any other items are approximate and no responsibility is taken for any error, omission or mis-statement. This plan is for illustrative purposes only and should be used as such by any prospective purchaser. The services, systems and appliances shown have not been tested and no guarantee as to their operability or efficiency can be given.

These particulars, whilst believed to be accurate are set out as a general outline only for guidance and do not constitute any part of an offer or contract. Intending purchasers should not rely on them as statements of representation of fact, but must satisfy themselves by inspection or otherwise as to their accuracy. No person in this firm's employment has the authority to make or give any representation or warranty in respect of the property.

