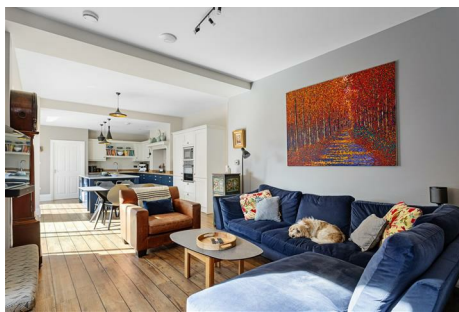


N A I S H

ESTATE AGENTS



YORK
EST. 1939



77 Nunthorpe Road , York, YO23 1BQ

This beautiful terraced home has been renovated and extended to an exceptional standard throughout. The property is situated just a few minutes' walk away from the City Centre & 'Bishy' Road which has an excellent range of shops and amenities.

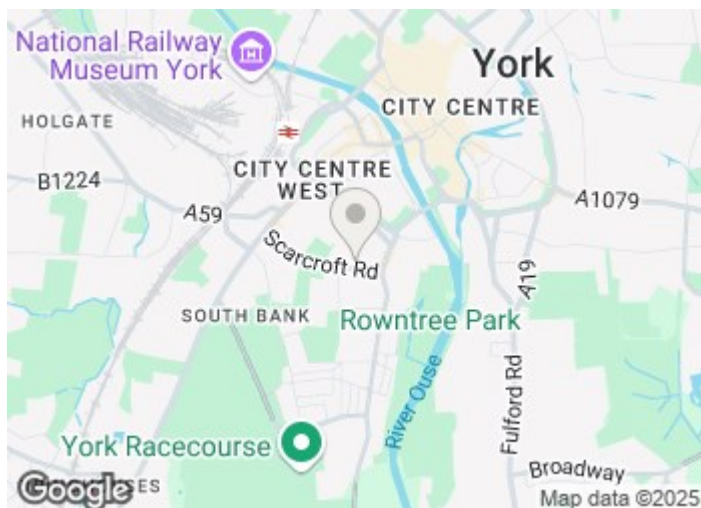
£650,000

77 Nunthorpe Road

, York, YO23 1BQ



- Victorian Town-House
- Off Street Parking
- Solar Panels
- Three Double Bedrooms
- Open Plan Living/Kitchen/Dining space
- Walking distance to 'Bishy Road'
- Three Bathrooms
- Utility & Basement space



Directions



Floor Plan



APPROXIMATE GROSS INTERNAL AREA = 175.5 sq m / 1889 sq ft

Whilst every attempt has been made to ensure the accuracy of the floorplan contained here, measurements of doors, windows, rooms and any other items are approximate and no responsibility is taken for any error, omission or mis-statement. This plan is for illustrative purposes only and should be used as such by any prospective purchaser. The services, systems and appliances shown have not been tested and no guarantee as to their operability or efficiency can be given.

These particulars, whilst believed to be accurate are set out as a general outline only for guidance and do not constitute any part of an offer or contract. Intending purchasers should not rely on them as statements of representation of fact, but must satisfy themselves by inspection or otherwise as to their accuracy. No person in this firms employment has the authority to make or give any representation or warranty in respect of the property.

Energy Efficiency Rating		
	Current	Potential
Very energy efficient - lower running costs		
(92 plus) A		
(81-91) B	86	86
(69-80) C		
(55-68) D		
(39-54) E		
(21-38) F		
(1-20) G		
Not energy efficient - higher running costs		
England & Wales		
EU Directive 2002/91/EC		