



## 11 Moor Close, Wheldrake , Wheldrake, YO19 6TA

Situated in this quiet residential cul-de-sac is this detached four-bedroom, three-bathroom family home located in the popular village of Wheldrake, 8 miles from the centre of York and 5 miles from the A64.

**Asking Price £365,000**

# 11 Moor Close, Wheldrake

, Wheldrake, YO19 6TA

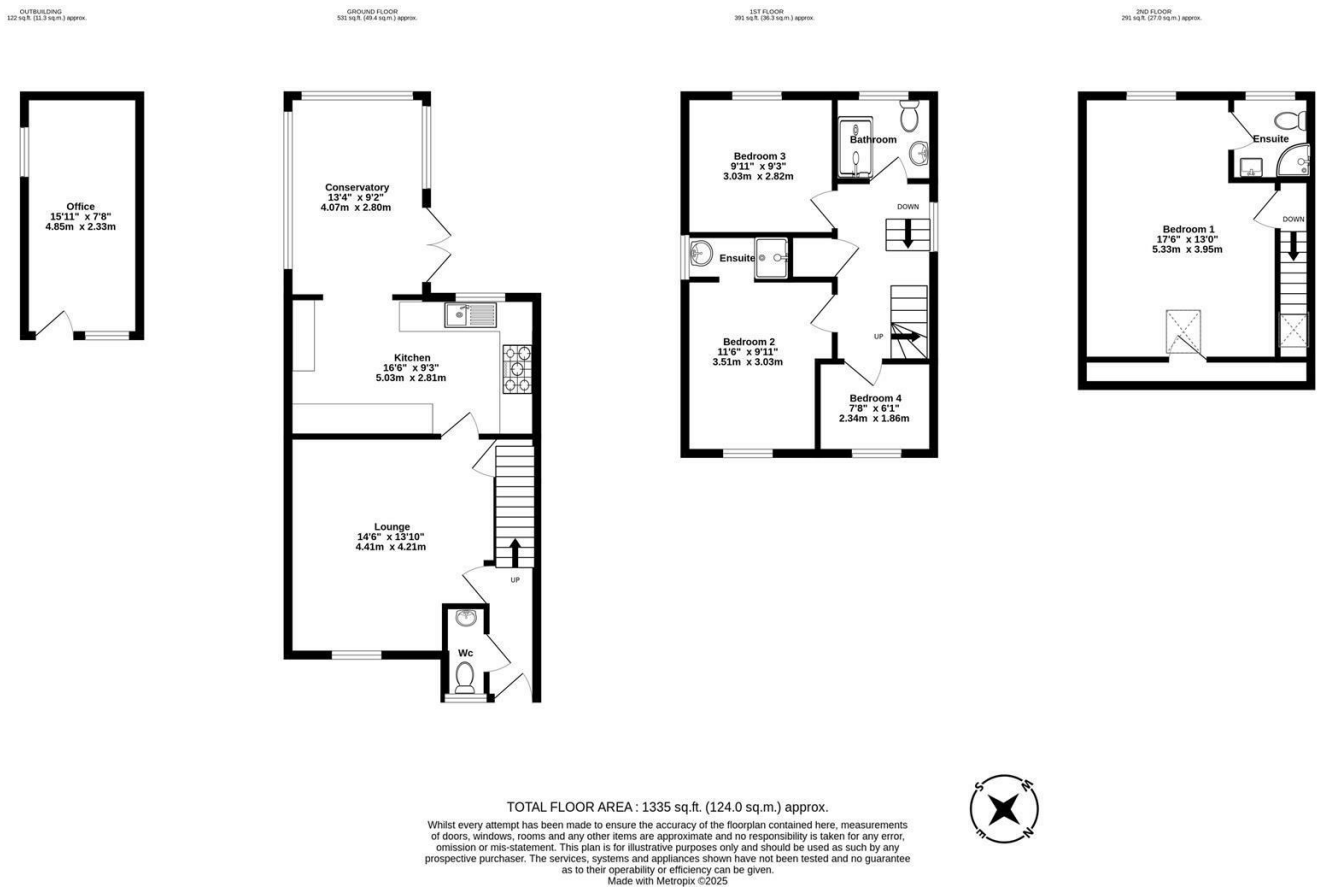


[Directions](#)





# Floor Plan



These particulars, whilst believed to be accurate are set out as a general outline only for guidance and do not constitute any part of an offer or contract. Intending purchasers should not rely on them as statements of representation of fact, but must satisfy themselves by inspection or otherwise as to their accuracy. No person in this firms employment has the authority to make or give any representation or warranty in respect of the property.

3 High Petergate, York, YO1 7EN  
Tel: 01904 653564 Email: [naish@naishproperty.co.uk](mailto:naish@naishproperty.co.uk) [www.naishproperty.co.uk](http://www.naishproperty.co.uk)

