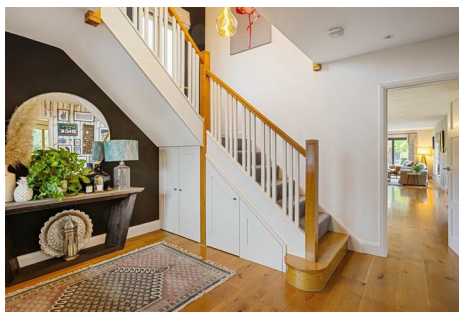


NAISH
ESTATE AGENTS



YORK
EST. 1939



26 Church Lane, Bishopthorpe
Bishopthorpe, York, YO23 2QG

Stunning detached family home SOLD 'OFF MARKET' by NAISH

£1,300,000

26 Church Lane, Bishopthorpe

Bishopthorpe, York, YO23 2QG



- SOLD OFF MARKET BY NAISH ESTATE AGENTS
- Open Plan Living
- Full size gym with plunge pool
- Exceptional Detached family home
- Double Garage
- Follow Naish on Facebook
- Four double bedrooms plus home office
- Incredible views and presentation



[Directions](#)



Floor Plan



TOTAL FLOOR AREA : 3785 sq.ft. (351.6 sq.m.) approx.

Whilst every attempt has been made to ensure the accuracy of the floorplan contained here, measurements of doors, windows, rooms and any other items are approximate and no responsibility is taken for any error, omission or mis-statement. This plan is for illustrative purposes only and should be used as such by any prospective purchaser. The services, systems and appliances shown have not been tested and no guarantee as to their operability or efficiency can be given.
Made with Metropix ©2024



These particulars, whilst believed to be accurate are set out as a general outline only for guidance and do not constitute any part of an offer or contract. Intending purchasers should not rely on them as statements of representation of fact, but must satisfy themselves by inspection or otherwise as to their accuracy. No person in this firm's employment has the authority to make or give any representation or warranty in respect of the property.

3 High Petergate, York, YO1 7EN
Tel: 01904 653564 Email: naish@naishproperty.co.uk www.naishproperty.co.uk

Energy Efficiency Rating		
	Current	Potential
Very energy efficient - lower running costs		
(92 plus) A		
(81-91) B		
(69-80) C	76	80
(55-68) D		
(39-54) E		
(21-38) F		
(1-20) G		
Not energy efficient - higher running costs		
England & Wales	EU Directive 2002/91/EC	