

N A I S H
E S T A T E A G E N T S



Y O R K
E S T . 1 9 3 9



45 Lamplugh Crescent, Bishopthorpe Bishopthorpe, York, YO23 2SR

Newly renovated, detached bungalow in the heart of Bishopthorpe, York

Asking Price £500,000

45 Lamplugh Crescent, Bishopthorpe

Bishopthorpe, York, YO23 2SR



- No Onward Chain
- Newly renovated throughout
- Ideal Location
- Detached Bungalow
- Large gardens
- Three Bedrooms
- Off street Parking and Garage

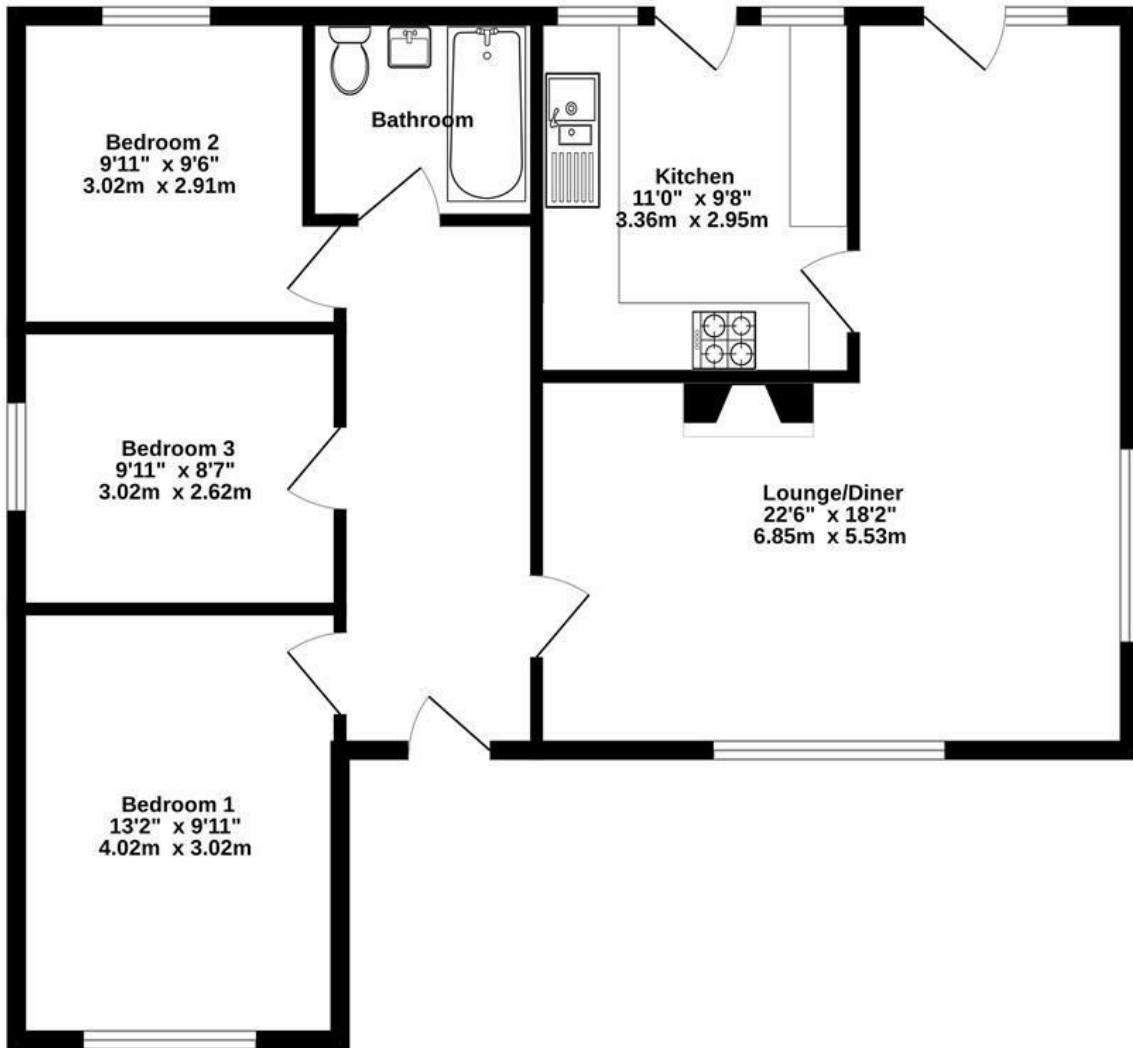


Directions



Floor Plan

GROUND FLOOR
846 sq.ft. (78.6 sq.m.) approx.



TOTAL FLOOR AREA : 846 sq.ft. (78.6 sq.m.) approx.

Whilst every attempt has been made to ensure the accuracy of the floorplan contained here, measurements of doors, windows, rooms and any other items are approximate and no responsibility is taken for any error, omission or mis-statement. This plan is for illustrative purposes only and should be used as such by any prospective purchaser. The services, systems and appliances shown have not been tested and no guarantee as to their operability or efficiency can be given.
Made with Metropix ©2024



These particulars, whilst believed to be accurate are set out as a general outline only for guidance and do not constitute any part of an offer or contract. Intending purchasers should not rely on them as statements of representation of fact, but must satisfy themselves by inspection or otherwise as to their accuracy. No person in this firm's employment has the authority to make or give any representation or warranty in respect of the property.

3 High Petergate, York, YO1 7EN
Tel: 01904 653564 Email: naish@naishproperty.co.uk www.naishproperty.co.uk

Energy Efficiency Rating		Current	Potential
<i>Very energy efficient - lower running costs</i>			
(92 plus) A			
(81-91) B			81
(69-80) C		68	
(55-68) D			
(39-54) E			
(21-38) F			
(1-20) G			
<i>Not energy efficient - higher running costs</i>			
England & Wales		EU Directive 2002/91/EC	