

N A I S H
E S T A T E A G E N T S



YORK
EST. 1939



17 Orchard Close , York, YO24 2NX

Orchard Close is a quiet cul-de-sac located approximately 1.5 miles from York City Centre and offers easy access to local amenities including shops, supermarkets, restaurants and pubs.

The bungalow is offered with no onward chain and sits on a sizeable corner plot.

Asking Price £270,000

17 Orchard Close

, York, YO24 2NX



- Semi-Detached Bungalow
- Three Bedrooms
- Corner Plot
- Off Street Parking And Garage
- Extended
- Ideal Location
- NO ONWARD CHAIN

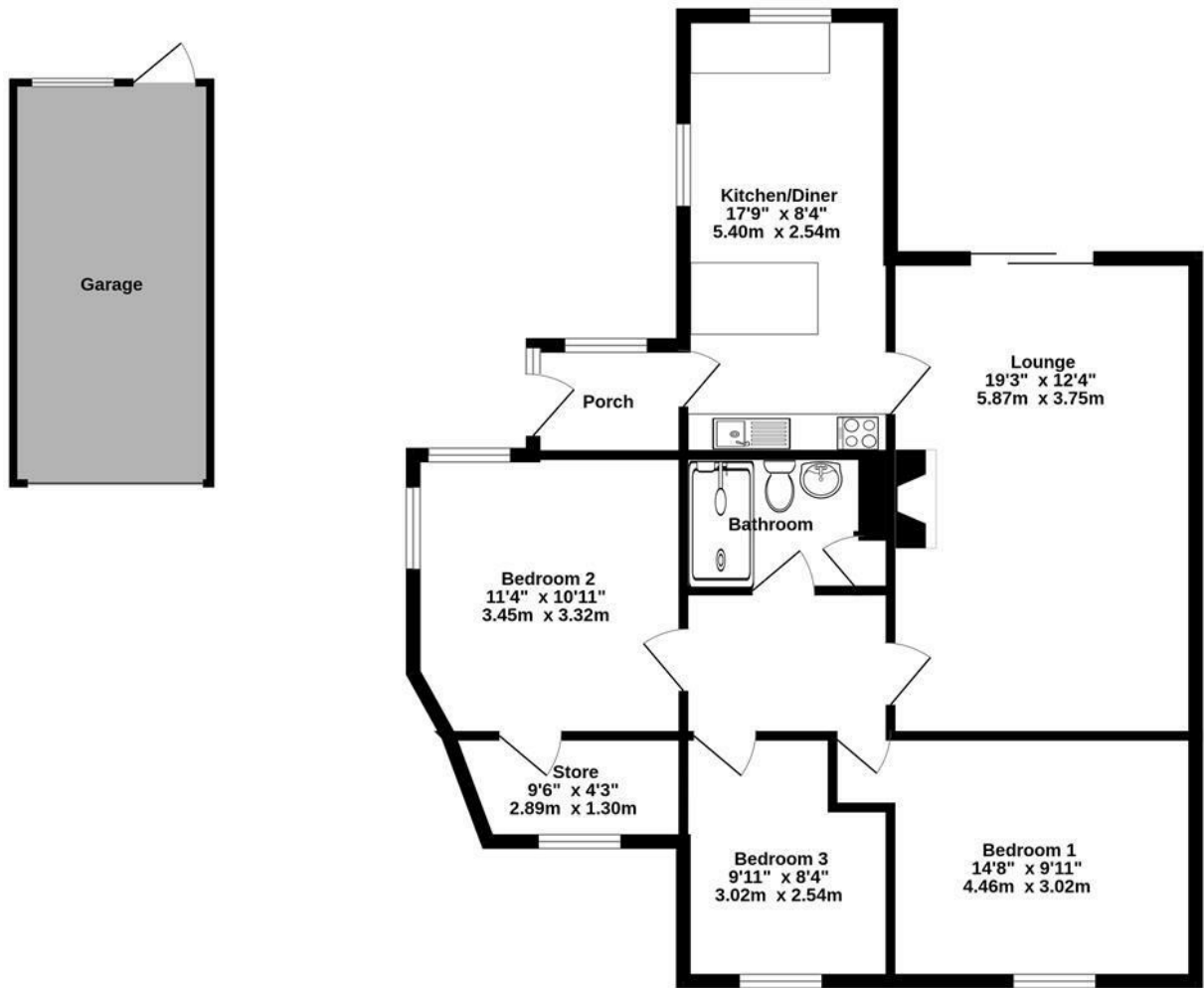


Directions



Floor Plan

GROUND FLOOR
859 sq.ft. (79.8 sq.m.) approx.



TOTAL FLOOR AREA : 859 sq.ft. (79.8 sq.m.) approx.
Whilst every attempt has been made to ensure the accuracy of the floorplan contained here, measurements of doors, windows, rooms and any other items are approximate and no responsibility is taken for any error, omission or mis-statement. This plan is for illustrative purposes only and should be used as such by any prospective purchaser. The services, systems and appliances shown have not been tested and no guarantee as to their operability or efficiency can be given.
Made with Metropix ©2024



These particulars, whilst believed to be accurate are set out as a general outline only for guidance and do not constitute any part of an offer or contract. Intending purchasers should not rely on them as statements of representation of fact, but must satisfy themselves by inspection or otherwise as to their accuracy. No person in this firms employment has the authority to make or give any representation or warranty in respect of the property.

Energy Efficiency Rating		
	Current	Potential
Very energy efficient - lower running costs		
(92 plus) A		
(81-91) B		81
(69-80) C	66	
(55-68) D		
(39-54) E		
(21-38) F		
(1-20) G		
Not energy efficient - higher running costs		
England & Wales		EU Directive 2002/91/EC