

N A I S H  
E S T A T E   A G E N T S



Y O R K  
E S T . 1 9 3 9



## 1 South Esplanade

, York, YO1 9SJ

1 South Esplanade is the end property in a row of prestigious homes that define the history and romance of York. The property has featured in many TV and film productions due to its incredible location.

**£3,500 Per Month**

# 1 South Esplanade

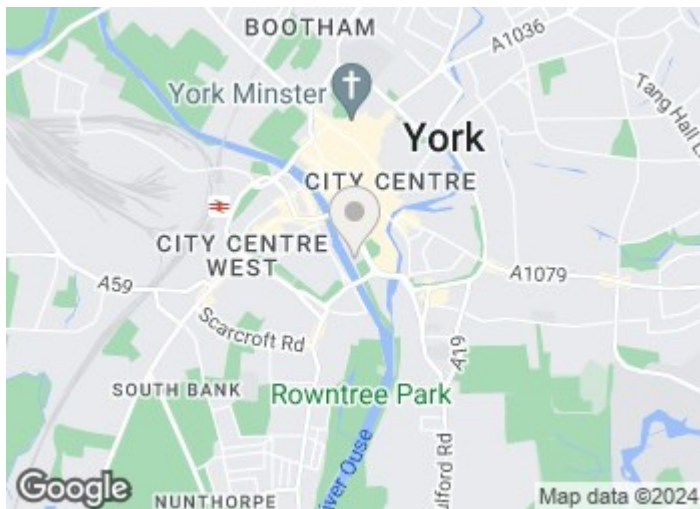
, York, YO1 9SJ



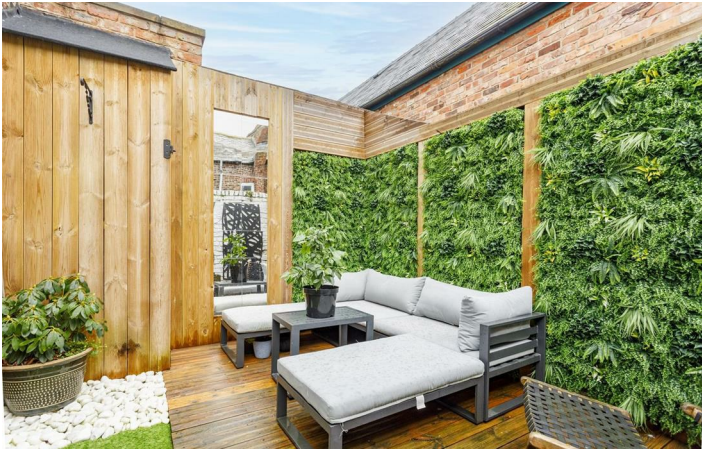
- Stunning Grade II listed Town House
- Beautifully Presented Throughout
- Permit Parking
- Pets considered
- Four Bedrooms
- Views of Clifford's Tower
- Available 1st July
- Riverside Property
- Original Features
- Company Lets considered

## Property Description

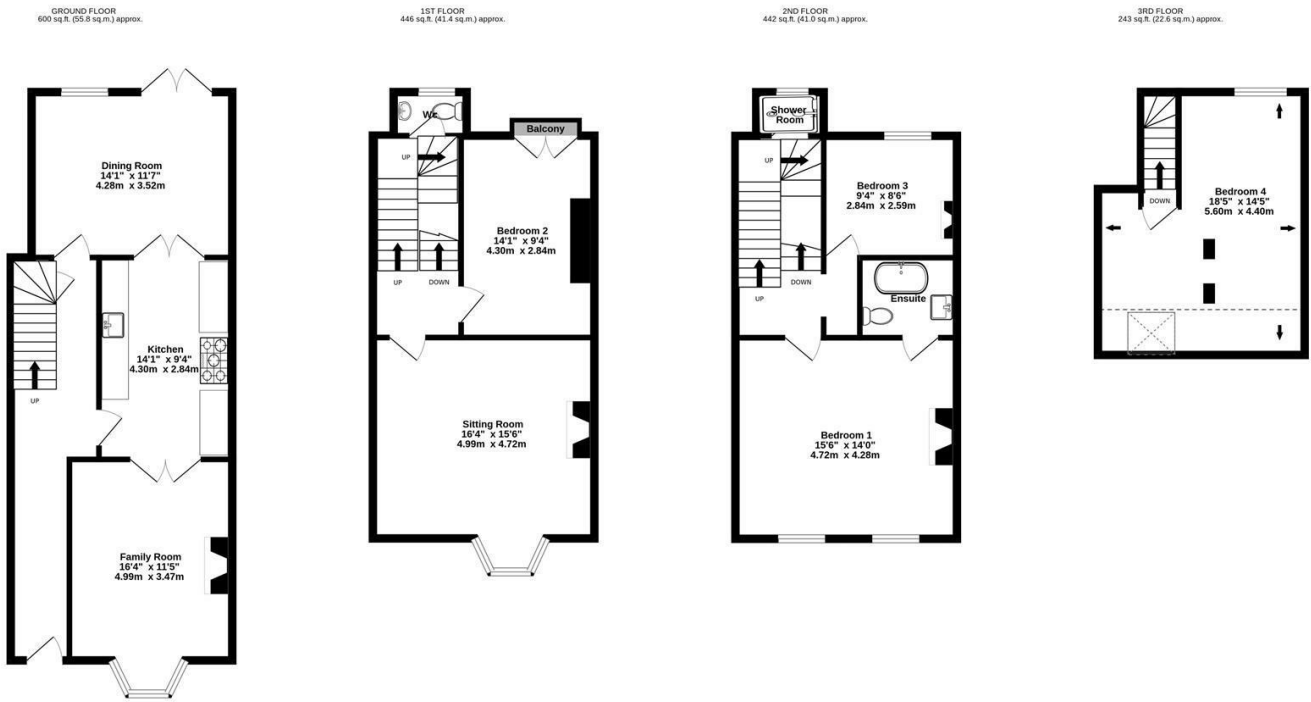
### Costs



### Directions



# Floor Plan



TOTAL FLOOR AREA: 1730 sq.ft. (160.7 sq.m.) approx.

Whilst every attempt has been made to ensure the accuracy of the floorplan contained here, measurements of doors, windows, rooms and any other items are approximate and no responsibility is taken for any error, omission or mis-statement. This plan is for illustrative purposes only and should be used as such by any prospective purchaser. The services, systems and appliances shown have not been tested and no guarantee as to their operability or efficiency can be given.  
Made with Metropix ©2024



These particulars, whilst believed to be accurate are set out as a general outline only for guidance and do not constitute any part of an offer or contract. Intending purchasers should not rely on them as statements of representation of fact, but must satisfy themselves by inspection or otherwise as to their accuracy. No person in this firm's employment has the authority to make or give any representation or warranty in respect of the property.

3 High Petergate, York, YO1 7EN  
Tel: 01904 653564 Email: [naish@naishproperty.co.uk](mailto:naish@naishproperty.co.uk) [www.naishproperty.co.uk](http://www.naishproperty.co.uk)

Energy Efficiency Rating		Current	Potential
Very energy efficient - lower running costs			
(92 plus) <b>A</b>			
(81-91) <b>B</b>			
(69-80) <b>C</b>			<b>71</b>
(55-68) <b>D</b>		<b>49</b>	
(39-54) <b>E</b>			
(21-38) <b>F</b>			
(1-20) <b>G</b>			
Not energy efficient - higher running costs			
<b>England &amp; Wales</b>		EU Directive 2002/91/EC	