



Roman Way,
Brishing Lane ME17 4SH
£1,900 PCM

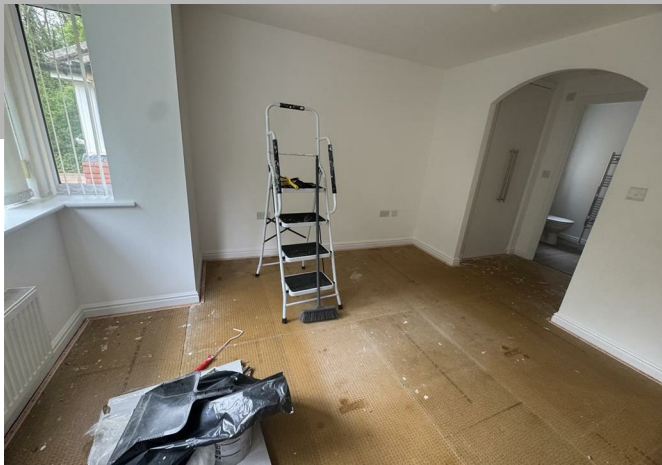
COLES
TOWN & COUNTRY
VALUERS • LETTINGS & ESTATE AGENTS

A superb recently built 4 bedroom detached house with integral garage in a popular location.


The property comprises: A spacious entrance hall with downstairs cloakroom and door to garage, kitchen/breakfast room with a range of fitted floor and wall units, 5 burner gas hob with extractor hood and splash back all in stainless steel, oven and 1 1/2 bowl stainless steel sink, lounge/diner with french doors to garden, master bedroom with dressing area with 2 built in wardrobes and en-suite shower, two further double bedrooms and a single, family bathroom with white 3 piece suite, galleried landing with linen cupboard, gas central heating, double glazing and vertical blinds. There is a single integral garage with driveway providing further off road parking and gardens front and rear.









Energy Efficiency Rating		
	Current	Potential
Very energy efficient - lower running costs		
(92 plus) A		
(81-91) B		
(69-80) C		
(55-68) D		
(39-54) E		
(21-38) F		
(1-20) G		
Not energy efficient - higher running costs		
England & Wales		EU Directive 2002/91/EC 

The Estate Office, Roundoak, Heniker Lane, Sutton Valence, Kent, ME17 3ED
01622 763322
enquiries@thecolesgroup.co.uk

COLES
TOWN & COUNTRY

VALUERS • LETTINGS & ESTATE AGENTS

Location Map

