

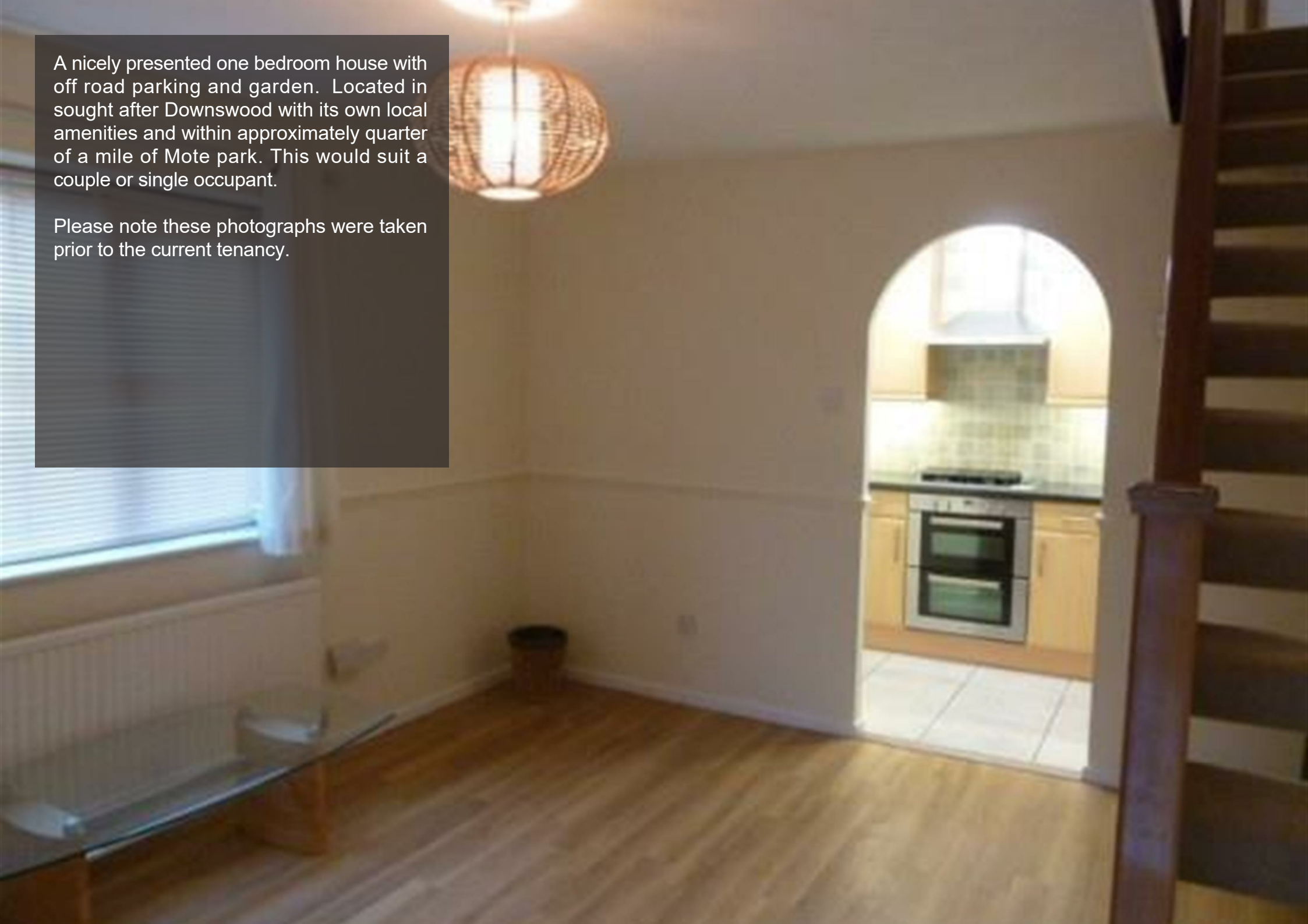


Willow Rise,
Maidstone ME15 8XR
£975 Per Month

COLES
TOWN & COUNTRY
VALUERS · LETTINGS & ESTATE AGENTS

A nicely presented one bedroom house with off road parking and garden. Located in sought after Downswood with its own local amenities and within approximately quarter of a mile of Mote park. This would suit a couple or single occupant.

Please note these photographs were taken prior to the current tenancy.



A more detailed description is as follows:

Ground Floor: Good size lounge. Fitted kitchen offering a good range of cupboards together with integrated gas hob, double oven, dishwasher and space for a fridge freezer and washing machine.

First Floor: A good size double bedroom with fitted wardrobe. Bathroom with white suite comprising WC, wash basin and bath with wall mounted electric shower.

Exterior: There is a small self-contained garden just to the side of the property (accessed via secure gate) with shed.

Off road parking for two cars plus plenty of street parking.

Additional Information:

Council Tax Band - B

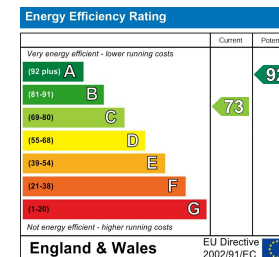
Parking Arrangements – 2 off road spaces plus road parking

Double glazing

Central heating







The Estate Office, Roundoak, Heniker Lane, Sutton Valence, Kent, ME17 3ED
 01622 763322
 enquiries@thecolesgroup.co.uk

COLES
 TOWN & COUNTRY
 VALUERS • LETTINGS & ESTATE AGENTS

Location Map

