



Bodiam Court,
Maidstone ME16 8LZ
Asking Price £200,000

COLES
TOWN & COUNTRY
VALUERS · LETTINGS & ESTATE AGENTS

Welcome to this ready to move into gated development, two doubled bedroom flat in Bodiam Court, Maidstone. A contemporary haven nestled in the heart of Maidstone. This immaculate two-bedroom flat boasts a perfect blend of comfort and convenience complemented by its prime location near the Odeon Cinema and mainline transport links.

This property also benefits from one allocated parking space and visitor bays.



A more detailed description:

Upon entering, you're welcomed by the hallway which leads you to the spacious reception room, ideal for entertaining guests or simply unwinding after a long day. Natural light floods the room, enhancing the airy ambiance and creating a welcoming atmosphere for relaxation. Off of the reception room you will find the kitchen. Perfect for whipping up culinary delights Whether you're hosting a dinner party or preparing a quick meal.

The property offers two generously sized bedrooms both catering for a double bed in each, providing the perfect retreat for rest and rejuvenation. The master bedroom boasts the luxury of an en-suite bathroom, offering privacy and convenience, while the second bedroom is ideal for guests, children, or a home office, adapting effortlessly to your lifestyle. Completing the accommodation is a practical family bathroom.

Situated in Bodiam Court, residents benefit from the convenience of town living, with an array of amenities right on their doorstep. The nearby Odeon Cinema offers entertainment for all ages, while the mainline transport links provide easy access to surrounding areas, making commuting a breeze.

EPC Rating C
Council Tax Band D

Additional Information:

There is an allocated parking space with the flat.

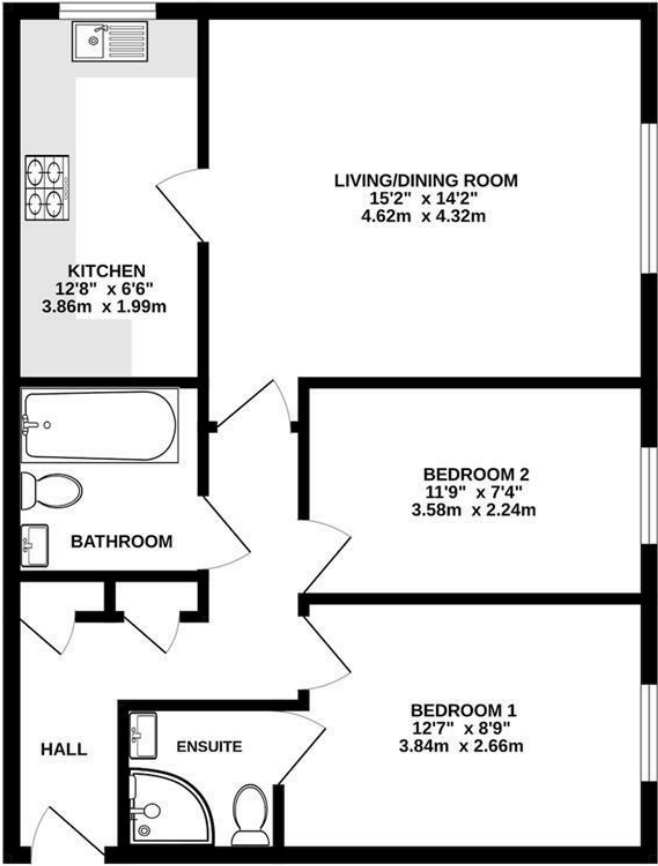
Ground Rent: £75 pa

Service Charge: £1686



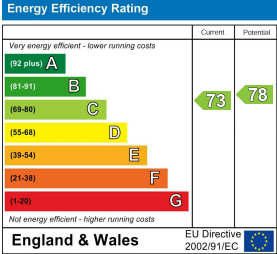


GROUND FLOOR
623 sq.ft. (57.9 sq.m.) approx.



TOTAL FLOOR AREA : 623 sq.ft. (57.9 sq.m.) approx.

Whilst every attempt has been made to ensure the accuracy of the floorplan contained here, measurements of doors, windows, rooms and any other items are approximate and no responsibility is taken for any error, omission or mis-statement. This plan is for illustrative purposes only and should be used as such by any prospective purchaser. The services, systems and appliances shown have not been tested and no guarantee as to their operability or efficiency can be given.
Made with Metroplan ©2024



The Estate Office, Roundoak, Heniker Lane, Sutton Valence, Kent, ME17 3ED
01622 763322
enquiries@thecolesgroup.co.uk

COLES
TOWN & COUNTRY
VALUERS • LETTINGS & ESTATE AGENTS

COLES

TOWN & COUNTRY

VALUERS • LETTINGS & ESTATE AGENTS

Location Map

