



16B Lane Ends Green

Hipperholme, HX3 8EZ

£1,200 PCM





NB: Images show a selection from the property development and show home, are not an exact representation.

An excellent opportunity to rent a recently built town house situated in sought after Hipperholme known for its wealth of amenities, highly rated schools, and excellent commuter links to the M62 motorway and the larger conurbations. The parade sits tucked away along Lane Ends Green and provides contemporary living with all the requirements for a young or growing family. As well as being the first ones to benefit from use of the property, features include off street parking and integral garage, accommodation over three floors with Juliette balcony to main living area, and landscaped raised garden to rear. Available for completion imminently viewings can be undertaken without delay - contact our offices for further information and to arrange an appointment.

Accommodation:

This townhouse property offers three bedroom living accommodation over three floors with off street parking & single integrated garage.

External:

Directly off Lane Ends Green the property provides for a single block paved parking bay in turn leading to integrated garage which benefits from power, lighting, and external water supply. To the rear there is a further paved area accessed from 1st floor level and raised landscaped area.

Ground Floor:

Entrance into sizeable hall area with hardwearing laminate flooring providing utilisable area for a variety of uses, Utility Room with laminate work surface, storage, & plumbing for washing machine. Ground floor WC with low flush WC and sink basin with storage below. Open stairwell leads to:

First Floor:

Main living area to rear elevation with Juliette doors accessing the rear paved garden. Dining kitchen having high quality suite to three elevations & incorporating appliances to include full height fridge/freezer, oven & microwave oven, and induction hob with extractor above.

Second Floor:

Two double bedrooms and third single bedroom all having high level TV points and USB-port mains plugs. House bathroom benefiting from four piece suite to include low flush WC, sink basin with storage beneath, panel bath & corner shower cubicle with mains fed shower. Bathroom has full laminate flooring and fully tiled walls.

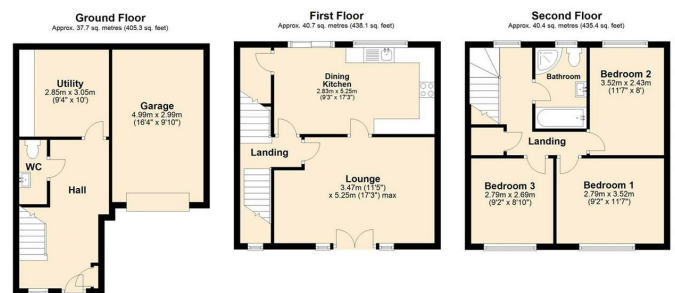
Location:

This parade of six new build town houses occupy a favourable location along a no through road close to Hipperholme centre which offers a range of amenities varying from local boutique shops, restaurants and takeaways, to larger national chains making it a most convenient location. Highly rated schools also lie within the catchment area of this family home, and for those working from the larger conurbations of Leeds/Manchester then J25/26 of the M62 motorway network like a short distance away.

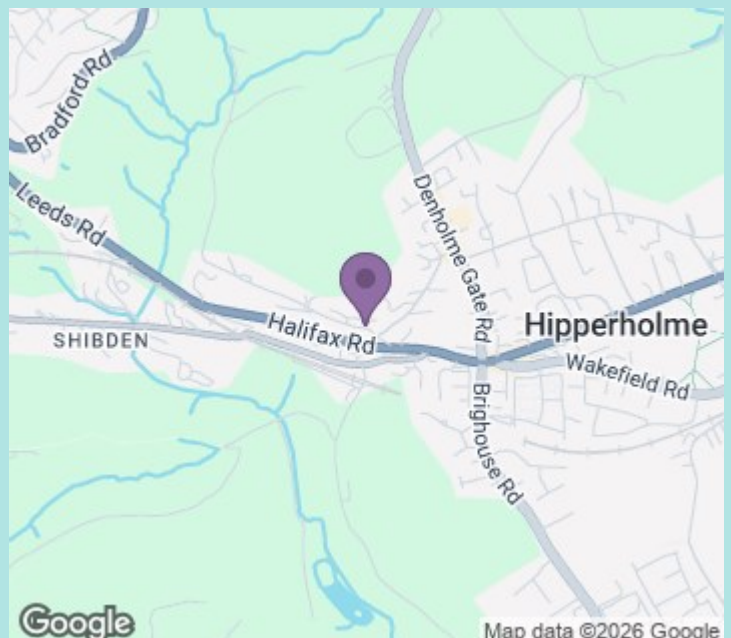
Council tax band: C

EPC rating: D

Deposit: £1,384



Total area: approx. 118.8 sq. metres (1278.8 sq. feet)



ws-residential.co.uk

01484 711200



These particulars, whilst believed to be accurate are set out as a general outline only for guidance and do not constitute any part of an offer or contract. Intending purchasers should not rely on them as statements of representation of fact, but must satisfy themselves by inspection or otherwise as to their accuracy. No person in this firm's employment has the authority to make or give any representation or warranty in respect of the property.