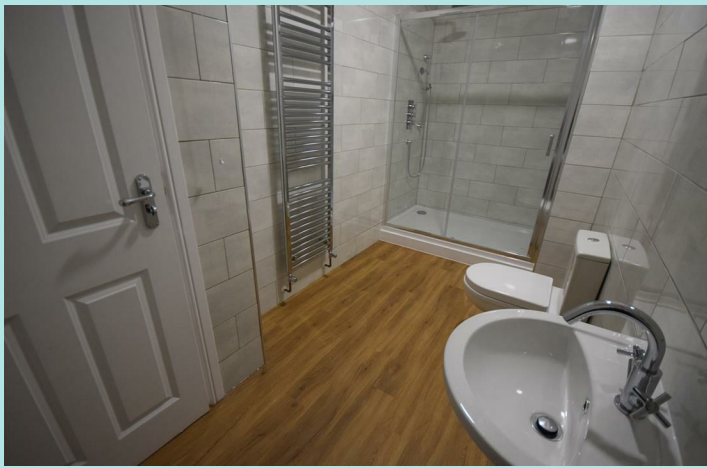


Somerset House George Street

Halifax, HX1 1HA

£650 PCM





This one bed apartment in Halifax town centre has modern fixtures & fittings throughout, and provides a perfect base for those wanting to be close to the amenities of Halifax including the transport links on offer. Ideally suited to a professional single/couple, the apartment is deceptively spacious and must be viewed to be fully appreciated.

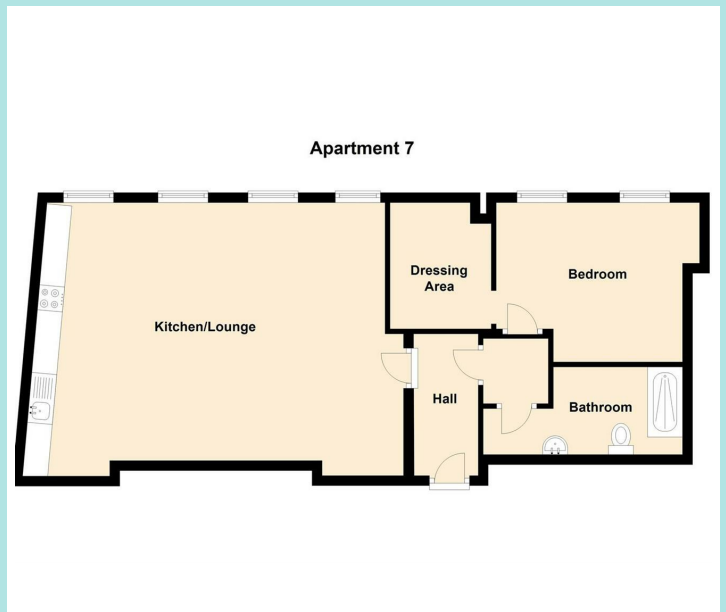
Accommodation

Briefly comprising; large open plan kitchen/lounge with fitted fridge/freezer oven & hob; shower room with three piece suite to include double shower cubicle, low flush w/c and pedestal sink; double bedroom with separate dressing area.

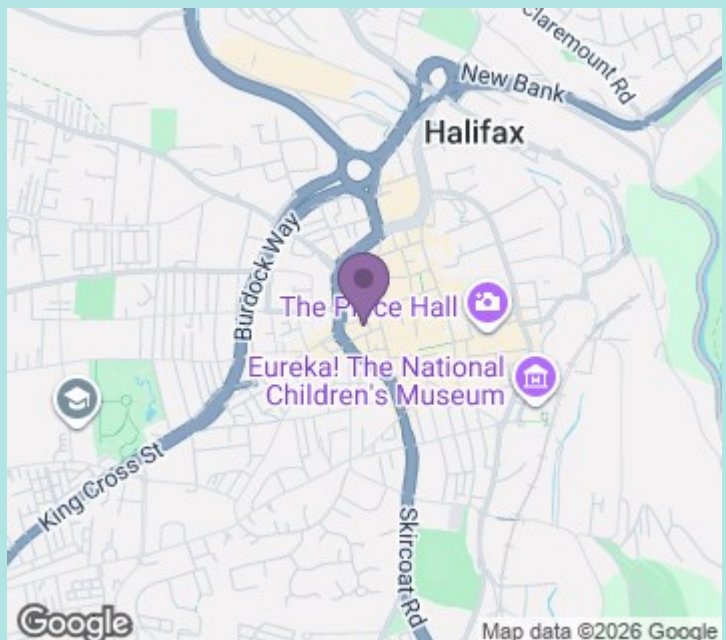
Location

Located towards the top of Halifax town centre, Somerset House provides convenient access to the wealth of shops/bars/restaurants on offer. The railway and bus stations can also be accessed within 10 minutes for those wishing to travel further afield.

NB: There is no parking offered with this property.



Council tax band: B
EPC rating: C
Deposit: £750



ws-residential.co.uk

01484 711200



These particulars, whilst believed to be accurate are set out as a general outline only for guidance and do not constitute any part of an offer or contract. Intending purchasers should not rely on them as statements of representation of fact, but must satisfy themselves by inspection or otherwise as to their accuracy. No person in this firm's employment has the authority to make or give any representation or warranty in respect of the property.