



151 Moor Lane

Netherton, Huddersfield, HD4 7JN

£795 PCM





A beautifully presented two bedroom semi-detached bungalow located in popular Netherton with good links to Huddersfield centre. The accommodation will provide a welcoming family home for a single or professional couple, or may suit an elderly occupant given it's single floor layout and good public transport links.

Accommodation

This recently redecorated two bedroom bungalow benefits from gas central heating and is uPVC double glazed throughout. The accommodation comprises of entrance hall, lounge with electric fire and timber surround, kitchen with range of neutral fitted base, drawer and wall units, integrated electric oven with four ring gas hob and extractor hood above. There is also plumbing for a washing machine and space for fridge freezer. The main double bedroom has mirror fronted wardrobes and a good sized single bedroom which would be ideal as an office or a child's room. The bathroom offers a three piece suite including WC, sink pedestal and panel bath with over bath electric shower, tiled walls and vanity cupboard.

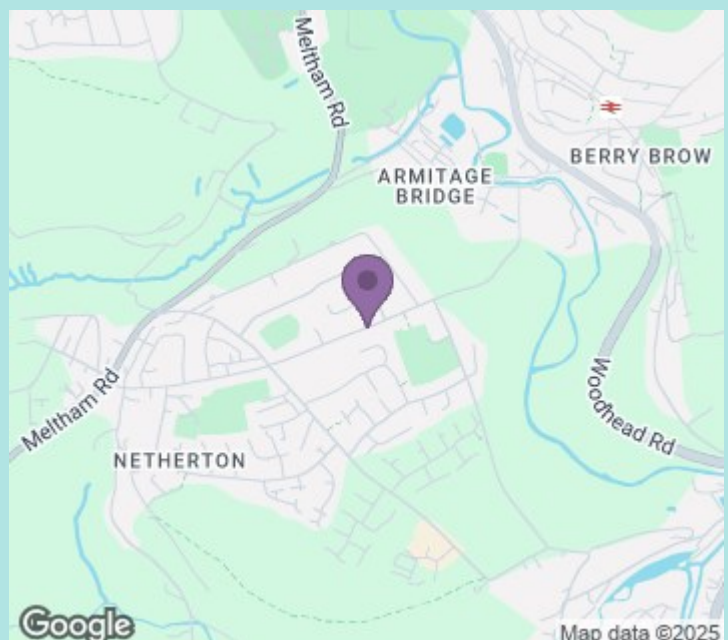
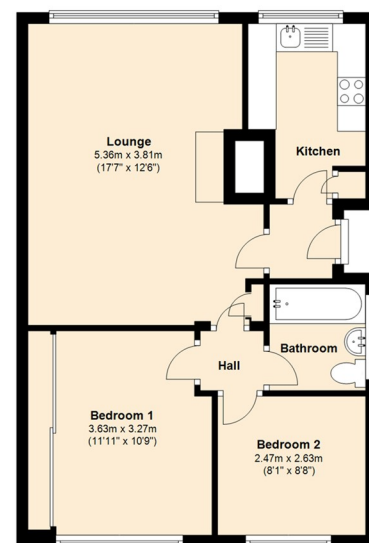
Externally there are lawned gardens to the front and rear, rear patio and shed with the paved driveway to the side leading to a useful detached single garage which has power and light.

Location

Situated in the popular residential area of Netherton with it's local amenities and nearby schools, the property benefits from great transport links to Huddersfield and and train station as well as to the easy access to the M62 commuter links.

Council tax band: B
EPC rating: D
Deposit: £917

151 Moor Lane, Netherton



ws-residential.co.uk

01484 711200



These particulars, whilst believed to be accurate are set out as a general outline only for guidance and do not constitute any part of an offer or contract. Intending purchasers should not rely on them as statements of representation of fact, but must satisfy themselves by inspection or otherwise as to their accuracy. No person in this firms employment has the authority to make or give any representation or warranty in respect of the property.