



RESIDENTIAL



## Somerset House George Street

Halifax, HX1 1HA

£600 PCM





This one bedroomed apartment offers town centre living ideal for a single professional, and seamlessly blends modern fixtures & fittings with the grandeur of a Grade II listed building. Also benefitting from gas central heating and large windows, this property is a perfect base for those requiring town centre amenities or transport links.

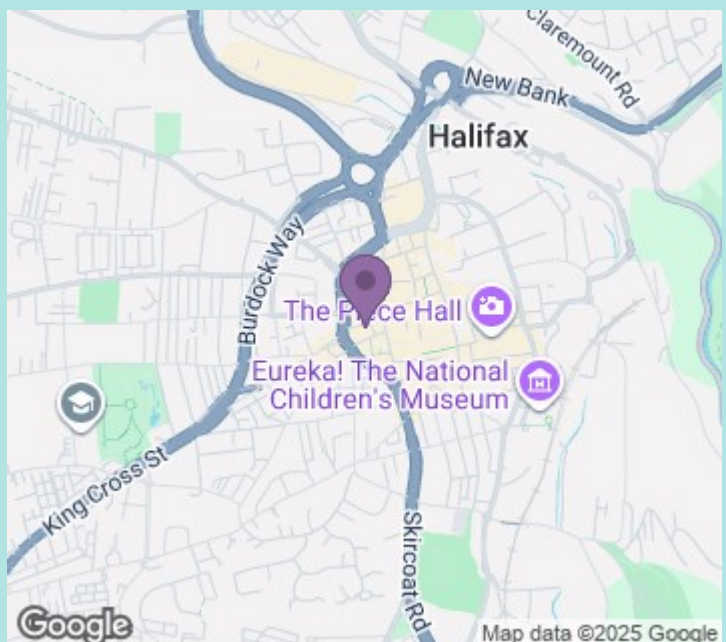
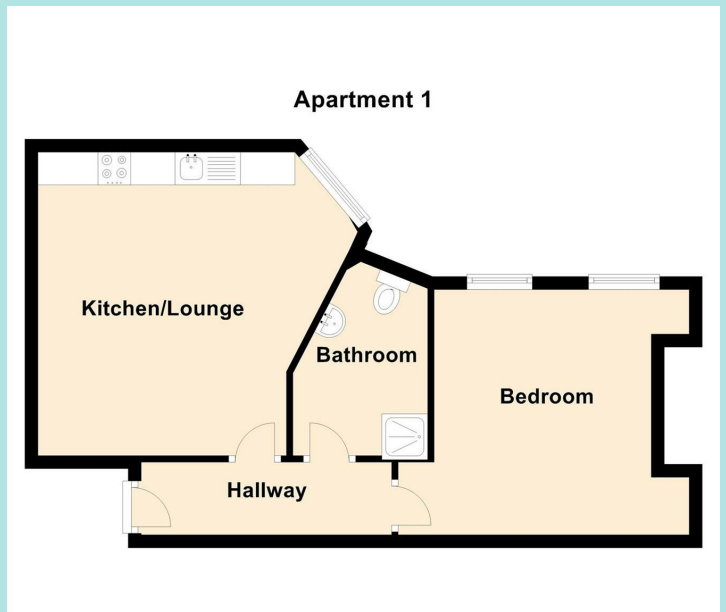
#### Accommodation

The property is located on the second floor. Internally, the apartment has an open plan lounge/kitchen with integrated fridge/freezer and electric oven & hob. A shower room having large shower cubicle, basin and low flush WC and a good sized double bedroom.

#### Location

Situated at the top of Halifax town centre, the property is an ideal base for utilising the wealth of amenities on offer including eateries, craft bars, chain stores and boutique sellers. Making an ideal base for the commuter all town centre employers are easily accessible and the presence of Halifax railway station gives direct access to the larger cities of Leeds, Bradford & Manchester. Similarly the bus station gives a public transport network to all larger Calderdale conurbations. Halifax Piece Hall and Westgate shopping arcade are both within a short walking distance.

Council tax band: A  
EPC rating: C  
Deposit: £663



ws-residential.co.uk

01484 711200



These particulars, whilst believed to be accurate are set out as a general outline only for guidance and do not constitute any part of an offer or contract. Intending purchasers should not rely on them as statements of representation of fact, but must satisfy themselves by inspection or otherwise as to their accuracy. No person in this firm's employment has the authority to make or give any representation or warranty in respect of the property.