

Apt 34 Weavers Buildings

Park Road, Elland, HX5 9GY

£625 PCM





Offered for let is this spacious two bedroom apartment within this highly desirable development Valley Mills. This apartment benefits from a modern high gloss fitted kitchen with a wealth of integrated appliances, a ground floor position and off road parking. The development acquires a convenient location, ideal for a professional individual or couple with commuting requirements.

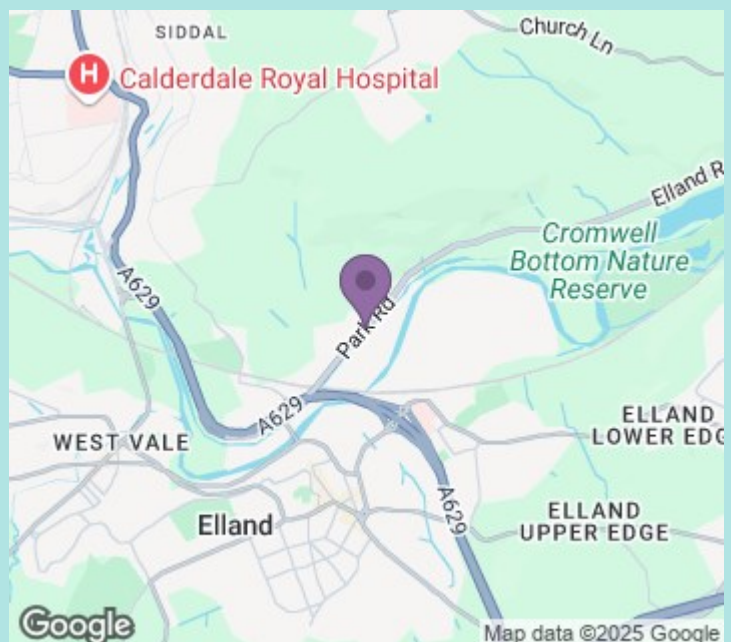
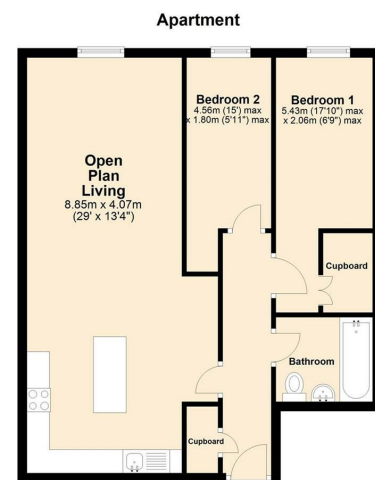
Accommodation

This two bedroom ground floor accommodation, briefly comprises of entrance hallway with intercom and convenient store cupboard. Leading through into an open plan lounge/kitchen area, kitchen incorporating a range of wall and drawer units with integrated appliances to include; electric oven, hob with extractor hood, washing machine, dishwasher, fridge, freezer and microwave, two bedrooms, bathroom/wc with mains shower. The property benefits from allocated parking space, double glazing and electric heating.

Location

The property is conveniently situated on Park Road, positioned within a short distance of Halifax, Elland and Brighouse providing a wealth of local amenities from bars, restaurants, convenience stores and wellness facilities. Ideal transport links to the M62 network, and bus/railway stations located within Halifax town centre all providing excellent commuter links to Huddersfield, Halifax, Bradford and Leeds.

Council tax band: C
EPC rating: D
Deposit: £721



ws-residential.co.uk

01484 711200



These particulars, whilst believed to be accurate are set out as a general outline only for guidance and do not constitute any part of an offer or contract. Intending purchasers should not rely on them as statements of representation of fact, but must satisfy themselves by inspection or otherwise as to their accuracy. No person in this firm's employment has the authority to make or give any representation or warranty in respect of the property.