



Apartment 43 Melbourne Mills

Morley, LS27 8BJ

£695 PCM





This two bedroom first floor apartment provides spacious living accommodation in this modern mill conversion located close to Morley centre. The property briefly comprises of communal entrance with stairs and lift to the apartment. Open plan lounge/kitchen, double bedroom with a single second bedroom, bathroom with over bath shower. Ideally suited to a professional couple.

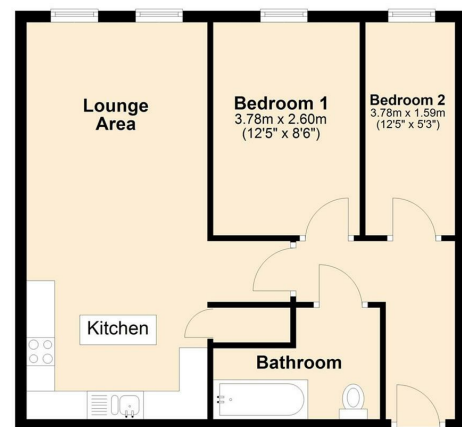
Accommodation

This two bedroom accommodation has secure car parking and lift access to all floors. Internally, the property comprises of entrance hall with telephone intercom system, open plan lounge/kitchen which benefits from integral appliances including electric fan assisted oven and hob with extractor hood, washer/dryer, and fridge/freezer, Double bedroom with a second single bedroom, family bathroom with three piece suite and over bath shower.

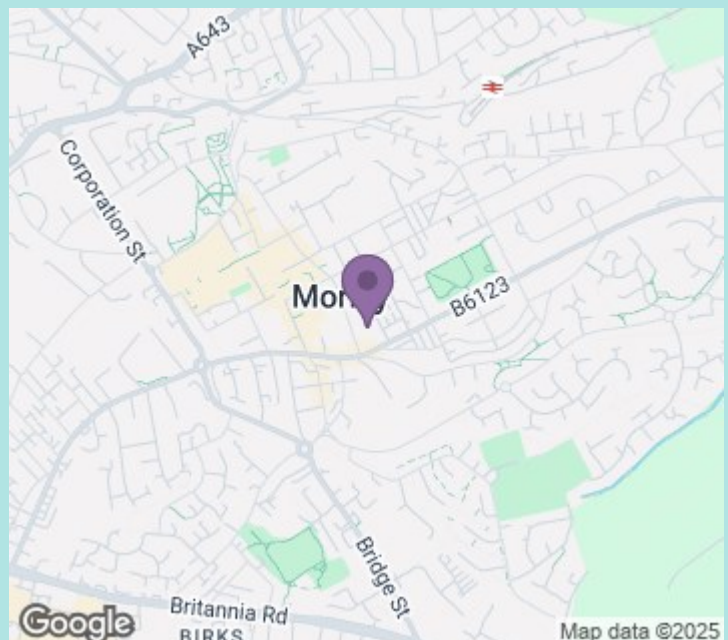
Location

Ideally situated close to Morley town centre and all it's amenities. The apartment also offers easy access to the M62 network with links to Leeds city centre and the surrounding area.

Apartment 43 Melbourne Mills



Council tax band: B
EPC rating: C
Deposit: £801



ws-residential.co.uk

01484 711200



These particulars, whilst believed to be accurate are set out as a general outline only for guidance and do not constitute any part of an offer or contract. Intending purchasers should not rely on them as statements of representation of fact, but must satisfy themselves by inspection or otherwise as to their accuracy. No person in this firm's employment has the authority to make or give any representation or warranty in respect of the property.