



Flat 3 Robin Hood Court

57 Huddersfield Road, Liversedge, WF15 7HN

£515 PCM





This spacious one bedroom duplex apartment is situated within a convenient residential location with good commuter links to nearby towns and the M62 network. The property will be of special interest to a professional couple or single and requires an early internal inspection to be fully appreciated.

****Please note a Guarantor is required on all applications****

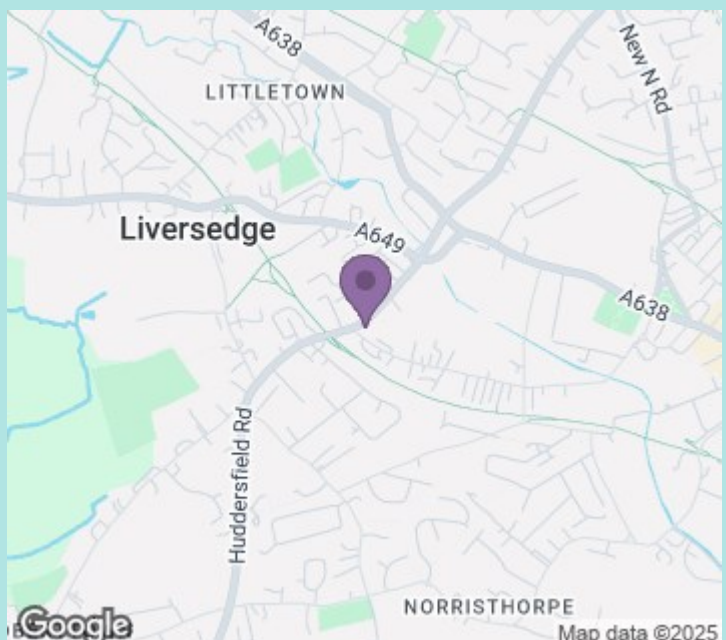
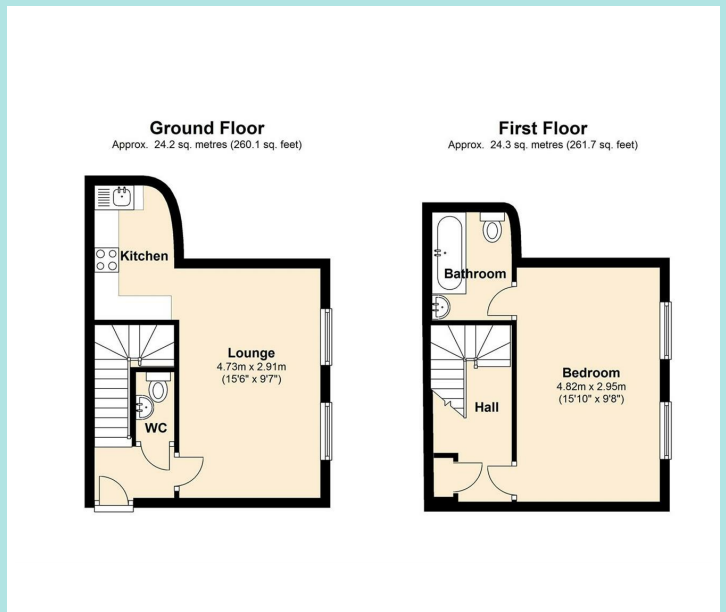
Accommodation

A deceptively spacious accommodation briefly comprises: entrance vestibule with stairs leading to the first floor landing. The lounge has an arch through to kitchen which is fitted with a range of wall and base units including integrated single oven, hob and extractor with plumbing for a washing machine. There is a WC cloakroom next to the stairs leading to the landing and double bedroom with en-suite bathroom. The property comes with allocated parking.

Location

The property is in close proximity to Liversedge town centre and lies between Cleckheaton and Heckmondwike with their local amenities and shops. There is also good commuter links to the wider area of Dewsbury and Batley including access to the M62 network and Leeds City.

Council tax band: A
EPC rating: D
Deposit: £594



ws-residential.co.uk

01484 711200



These particulars, whilst believed to be accurate are set out as a general outline only for guidance and do not constitute any part of an offer or contract. Intending purchasers should not rely on them as statements of representation of fact, but must satisfy themselves by inspection or otherwise as to their accuracy. No person in this firm's employment has the authority to make or give any representation or warranty in respect of the property.