



50 High Street

Queensbury, Bradford, BD13 2PA

£450 PCM





This stone built back-to-back terraced house provides one bedroom accommodation ideal for a professional individual or couple. The property has recently been renovated to include re-decoration and new carpets throughout. A convenient location within walking distance of Queensbury's shops and facilities.

Under the 'Consumer Protection from Unfair Trading Regulations 2008 (CPRs)' we are obliged to disclose that there has been a recent death which has occurred within the property from unnatural causes.

Accommodation

This one bedroom property provides excellent space for an individual or couple. Accommodation consists of an open plan living kitchen area with an inset stainless steel sink, fitted cupboards, and electric cooker. Open plan lounge area with stove. The first floor provides a spacious double bedroom, and bathroom provides a modern three piece white suite comprising of a low flush WC, wash basin and panel bath together with shower unit and shower screen.

The property benefits from a convenient under stairs storage area. Externally there is a small yard to the front of the property.

Location

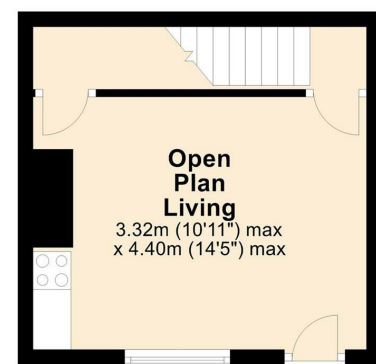
This property is situated within the desirable village of Queensbury, acquiring a wealth amenities from grocery stores, health facilities and restaurants. Ideal for commuting to Halifax, Bradford or Brighouse.

Council tax band: A
EPC rating: C
Deposit: £519

First Floor



Ground Floor



Total area: approx. 37.3 sq. metres (401.1 sq. feet)

ws-residential.co.uk



These particulars, whilst believed to be accurate are set out as a general outline only for guidance and do not constitute any part of an offer or contract. Intending purchasers should not rely on them as statements of representation of fact, but must satisfy themselves by inspection or otherwise as to their accuracy. No person in this firm's employment has the authority to make or give any representation or warranty in respect of the property.