



313 Holme Road

Warley, Halifax, HX2 7RP

£750 PCM





Summary:

We are pleased to bring to the market this well-presented spacious two bedroom, terraced house which is situated in the popular residential area of Warley Village. Providing spacious living accommodation including, kitchen, lounge, two double bedrooms, and house bathroom. The accommodation really does require an internal inspection to be fully appreciated.

Accommodation:

The property briefly comprises; Entrance hall leading into the lounge with gas fire, kitchen having integrated oven/hob with a range of wall, base and drawer units and two under stair cupboards providing additional storage. Two double bedrooms, a house bathroom with three piece suite comprising; low flush WC, wash hand basin with mixer tap and panel bath with over bath shower. Externally to the rear of the property is the garden area.

Location:

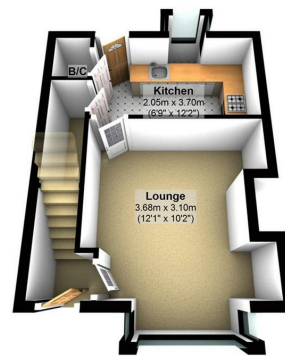
Warley Village is a sought-after location having access to Halifax Town Centre, Sowerby Bridge and the tourist location of Hebden Bridge where there are a variety of amenities and rail networks accessing the cities of Leeds, Manchester, and Bradford. There are amenities in and around the village to include public houses, hairdressers, petrol station, sports grounds and schools including Warley Town School within walking distance.

Council tax band: B

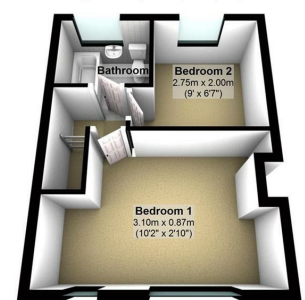
EPC rating: D

Deposit: £865

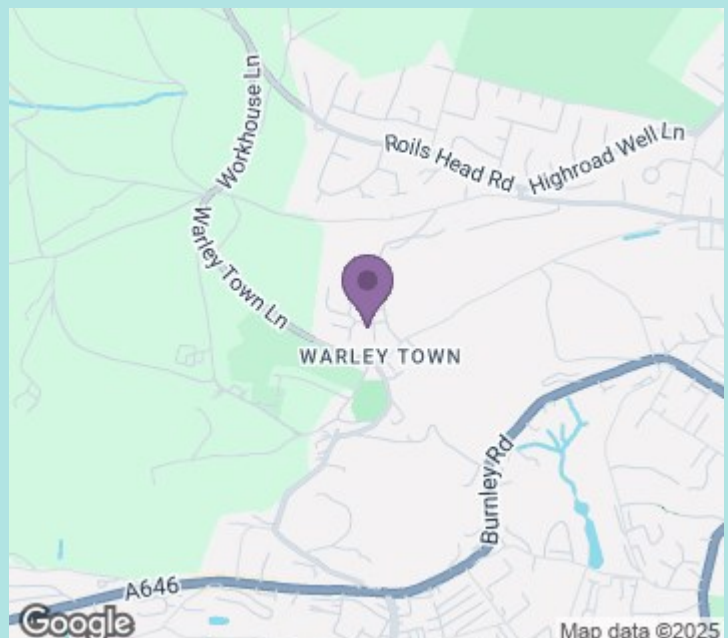
Ground Floor
Approx. 26.8 sq. metres (288.6 sq. feet)



First Floor
Approx. 27.2 sq. metres (292.4 sq. feet)



Total area: approx. 54.0 sq. metres (581.0 sq. feet)



ws-residential.co.uk

01484 711200



These particulars, whilst believed to be accurate are set out as a general outline only for guidance and do not constitute any part of an offer or contract. Intending purchasers should not rely on them as statements of representation of fact, but must satisfy themselves by inspection or otherwise as to their accuracy. No person in this firm's employment has the authority to make or give any representation or warranty in respect of the property.