



RESIDENTIAL



## Radcliffe Court, 81 Valley Drive

Harrogate, HG2 0JP

£650 PCM





An attractively presented one bedroom apartment located close to the centre of Harrogate spa town. Ideally suited to a single person or a couple, the property provides comfortable modern living within easy reach of the town centre and the wealth of amenities on offer.

### Accommodation

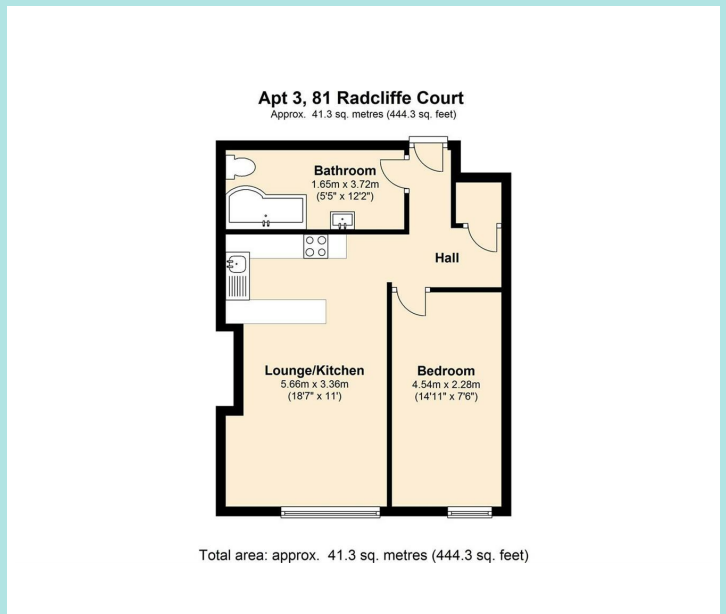
This second floor flat offers living accommodation for a single professional/couple. Accessed via communal staircase, the flat briefly comprises; bathroom with three piece suite including WC, basin, bath with shower over; open plan kitchen/lounge with breakfast bar, integrated oven/hob and fridge with freezer compartment and a freestanding washing machine; a double bedroom. Windows to the front elevation allow ample light into the property and gas central heating throughout is another benefit.

### Location

Situated near to Harrogate town centre, this property is an ideal hub for those working close by or commuters using Harrogate railway station. Directly opposite Valley Gardens & The Pinewoods offering picturesque walks or various activities including a pitch & putt course and tennis courts as well as regular band performances, there is always something to keep both mind & body active.

Flat 3 is on the second floor and there is no lift access. Valley Drive is in a disc parking zone and permits may be purchased from the local authority.

Council tax band: A  
EPC rating: C  
Deposit: £750



[ws-residential.co.uk](http://ws-residential.co.uk)

01484 711200



These particulars, whilst believed to be accurate are set out as a general outline only for guidance and do not constitute any part of an offer or contract. Intending purchasers should not rely on them as statements of representation of fact, but must satisfy themselves by inspection or otherwise as to their accuracy. No person in this firm's employment has the authority to make or give any representation or warranty in respect of the property.